

# Microsoft SQL Server 2012

Cass Walker  
TLG Learning

# SQL Server 2012

- ▶ Query Window Zoom
- ▶ Query Window Outlining
- ▶ T-SQL Language Enhancements
- ▶ Integration Services Catalogs
- ▶ Default Location for Backup Files
- ▶ MS Help Viewer
- ▶ FileTable
- ▶ AlwaysOn
- ▶ PowerPivot Excel Addin
- ▶ Power View
- ▶ Dashboards and Scorecards
- ▶ ColumnStore Index
- ▶ SQL Azure – Cloud Databases
- ▶ Managed Self-Service BI
- ▶ Edition Changes
- ▶ Sequence Generators
- ▶ Distributed Replay
- ▶ Enhanced Partition Wizard
- ▶ Table Partitioning Enhancements
- ▶ Spatial Data Improvements
- ▶ SQL Server Data Tools – formerly BIDS
- ▶ StreamInsight 1.2
- ▶ SSIS Package Design Enhanced and Management Simplified
- ▶ Master Data Services Improvements
- ▶ BI-Semantic Model
- ▶ SSAS Tabular Modeling
- ▶ Master Data Services Add-In for Excel
- ▶ Fast Track Data Warehouse Enhancements

# Seminar Topics

## Mission Critical Confidence

- Performance and Availability
- AlwaysOn
- AlwaysOn Availability Groups Drilldown

## Cloud on Your Terms

- Create business solutions fast, on your terms across server and private or public cloud

## Breakthrough Insight

- PowerPivot and PowerView
- Dashboards and Scorecards
- DataWarehouse Performance using ColumnStore Index
- Data Quality Services

# Industry Trends

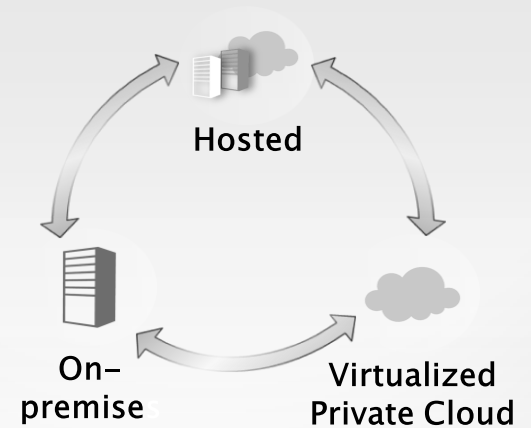
## DATA EXPLOSION



## CONSUMERIZATION OF IT



## PRIVATE AND PUBLIC CLOUD



The volume of digitized data in the workplace is exploding.

Consumers expect fast, easy and friendly access to enterprise information.

Cloud computing is changing the way data is accessed and processed.

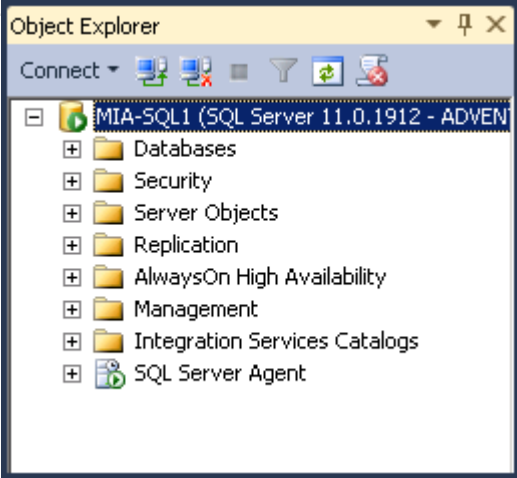


# Mission Critical Confidence

*Real-world value delivered, today*

## Greater High Availability NEW SQL Server AlwaysOn

Combination of Windows Clustering and SQL Server Mirroring for instance level or Mirroring and Log Shipping for database level



- AlwaysOn supports 24x7x365 ship tracking
- Improved application failover & uptime by 2x
- Complete redundancy & protection in a few clicks

*“Our business has to be on-line all the time....we were able to install SQL Server 2012 and enable AlwaysOn in a matter of minutes.”*



# Mission Critical Confidence

*Delivering the 9's*

**Greater High Availability**  
**NEW SQL Server AlwaysOn**

$$\frac{\text{Actual uptime}}{\text{Expected uptime}} \times 100\%$$

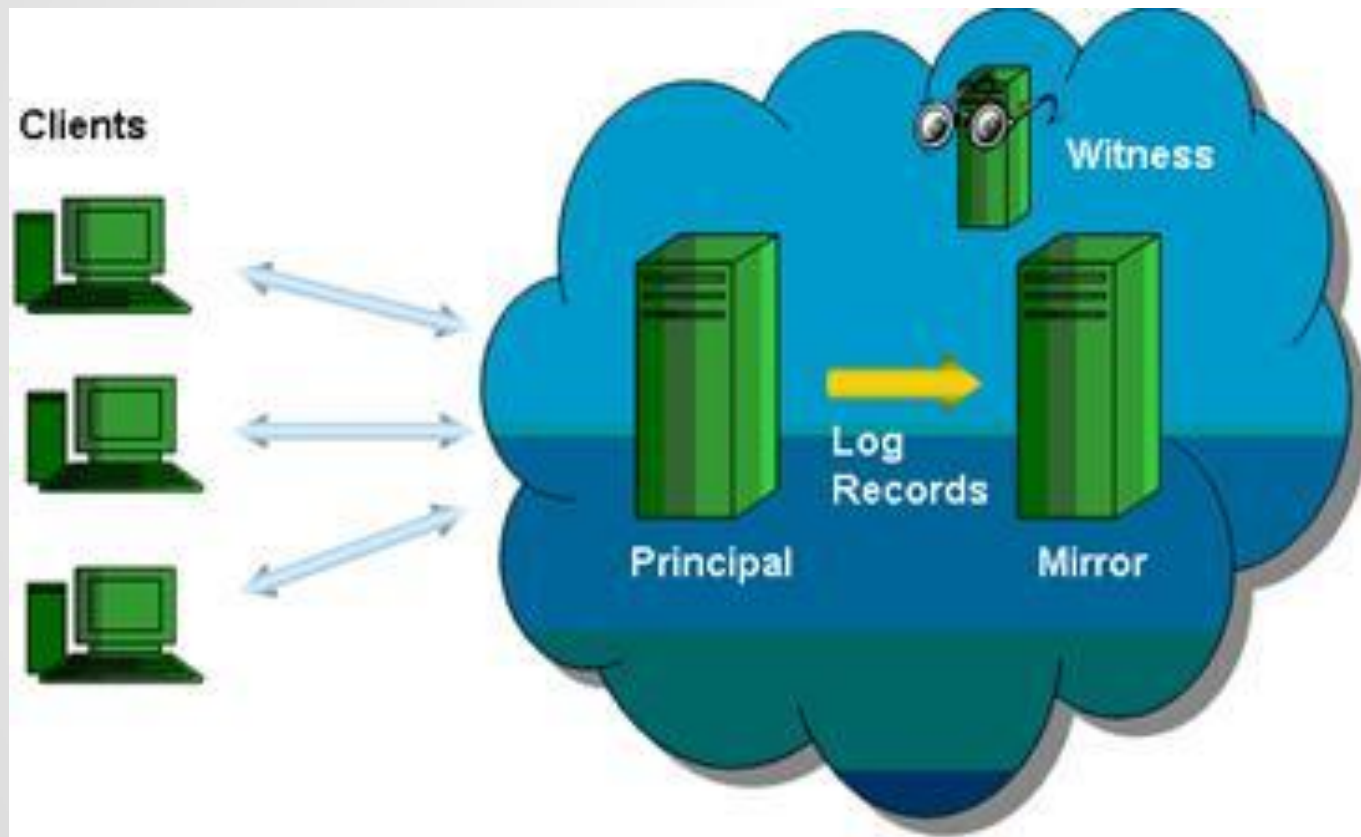
Number of 9's	Availability %	Total Annual Downtime
2	99%	3 days, 15 hours
3	99.9%	8 hours, 45 minutes
4	99.99%	52 minutes, 34 seconds
5	99.999%	5 minutes, 15 seconds

# Clustering Overview

[http://blogs.technet.com/blogfiles/vikasma/WindowsLiveWriter/HyperVHostclusterRC1\\_13F07/image\\_2.png](http://blogs.technet.com/blogfiles/vikasma/WindowsLiveWriter/HyperVHostclusterRC1_13F07/image_2.png)



# Mirroring Overview







# Mission Critical Confidence

*AlwaysOn*

## AlwaysOn Failover Cluster Instances (FCI) for instance level protection

- ▶ Multi-subnet Clustering
- ▶ Flexible Failover Policy
- ▶ Improved Diagnostics
- ▶ Predictable Recovery Time
- ▶ Built for Consolidation Scenarios

## AlwaysOn Availability Groups (AG) for database level protection

- ▶ Multi-Database Failover
- ▶ Multiple Secondaries
- ▶ Active Secondaries
- ▶ Integrated HA Management



# Mission Critical Confidence

*AlwaysOn Availability Groups*

## Flexible

- ▶ Multi-database failover
- ▶ Multiple secondaries
- ▶ Synchronous and asynchronous data movement
- ▶ Built-in compression and encryption
- ▶ Automatic and manual failover
- ▶ Flexible failover policy
- ▶ Automatic Page Repair

## Integrated

- ▶ Application failover using virtual name
- ▶ Configuration Wizard
- ▶ Dashboard
- ▶ System Center Integration
- ▶ Rich diagnostic infrastructure
- ▶ Replication publisher failover

## Efficient

- ▶ Active Secondary
  - ▶ Readable
  - ▶ Offload Backup

# Secondary Log Backups

Replica 1

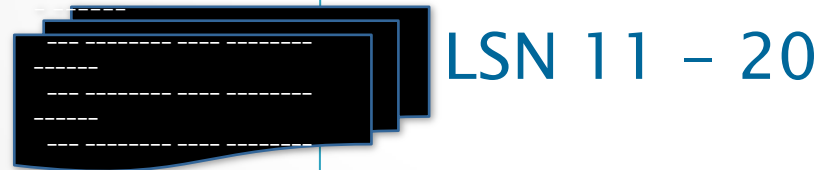


Log Backup

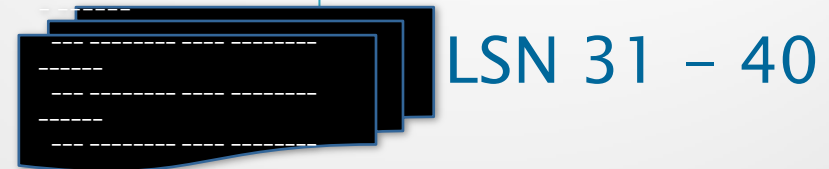


Log Backup

Replica 2



Log Backup



Log Backup

10774A-MIA-SQLI on localhost - Virtual Machine Connection

File Action Media Clipboard View Help

SQL Server Configuration Manager

File Action View Help

Name	State	Start Mode	Log On As	Process ID
SQL Server Integration Services 11.0	Running	Automatic	adventureworks\sqls...	1360
SQL Server (MKTG)	Running	Automatic	adventureworks\sqls...	1468
SQL Full-text Filter Daemon Launcher (MSSQLSERVER)	Running	Manual	NT Service\MSSQLFD...	2908
SQL Full-text Filter Daemon Launcher (MKTG)	Running	Manual	NT Service\MSSQLFD...	624
SQL Server (MSSQLSERVER)	Running	Automatic	adventureworks\sqls...	1536
SQL Server Analysis Services (MSSQLSERVER)	Running	Automatic	adventureworks\sqls...	1764
SQL Server Reporting Services (MKTG)	Running	Automatic	adventureworks\pws...	2032
SQL Server Agent	Running	Automatic	adventureworks\sqls...	1548
SQL Server Browser	Running	Automatic	NT AUTHORITY\LOC...	1340
SQL Server Agent	Running	Automatic	adventureworks\sqls...	2352

SQL Server Configuration Manager (Local)

- SQL Server Services
  - SQL Server Network Configuration (32bit)
  - SQL Native Client 11.0 Configuration (32bit)
  - SQL Server Network Configuration
  - SQL Native Client 11.0 Configuration

**SQL Server (MSSQLSERVER) Properties**

Log On: AlwaysOn High Availability | Service: Startup Parameters | FILESTREAM: Advanced

Windows failover cluster name:  
This computer

Enable AlwaysOn Availability Groups

Allow this instance of SQL Server to use availability groups for high availability and disaster recovery.

OK Cancel Apply Help

Status: Running



# Breakthrough Insight



## CUSTOMERS WANT

Rapid data exploration



PowerPivot built on Excel and **Power View** for stunning data visualizations & broad adoption

Managed self-service BI



End user agility through self-service BI balanced with enterprise security & governance via **SharePoint**

Credible, consistent data



**Data Quality Services & BI Semantic Model** for increased productivity and data accuracy, built-in

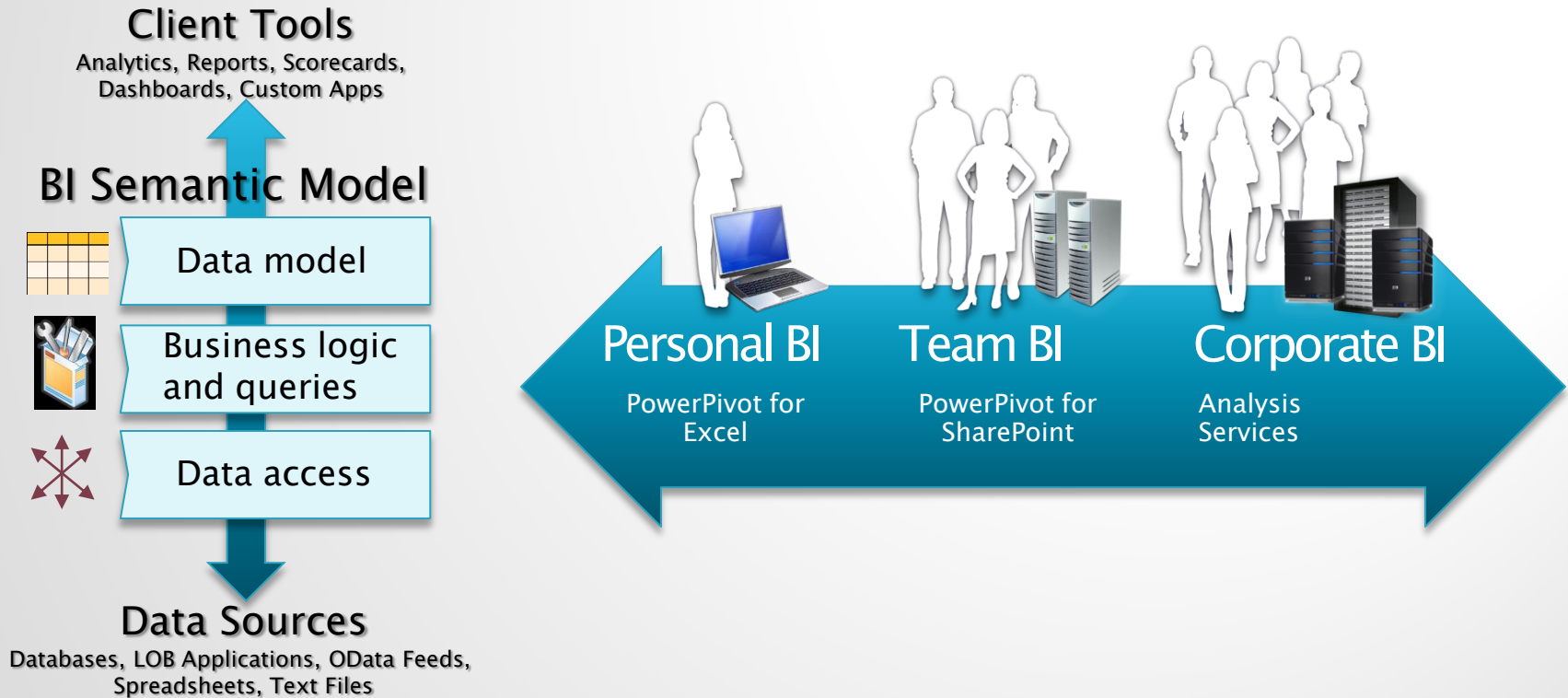
Scalable analytics & DW



Proven analytics for **24+TB** cubes, and **15K** partitions delivering Tier 1 scalability for large sliding windows

# BI Semantic Model

*One Model for all End User Experiences, Multiple ways to Build it*





# Breakthrough Insight

## PowerPivot Business Intelligence

- ▶ Excel add-in utility
- ▶ Rich data analysis models in Excel
- ▶ Large Data Sets
- ▶ Easy to “mash up” data from heterogeneous sources
- ▶ Refreshes data from all sources
- ▶ Rich visualizations
- ▶ Publish results to SharePoint
- ▶ Uses Data Analysis Expression (DAX) Language
  - ▶ Uses datetime instead of Excel’s sequential serial numbers
  - ▶ Time intelligence functions





# Breakthrough Insight

## PowerPivot Business Intelligence

- ▶ Excel add-in utility
- ▶ Rich data analysis models in Excel
- ▶ Large Data Sets
- ▶ Easy to “mash up” data from heterogeneous sources
- ▶ Refreshes data from all sources
- ▶ Rich visualizations
- ▶ Publish results to SharePoint
- ▶ Uses Data Analysis Expression (DAX) Language
  - ▶ Uses datetime instead of Excel’s sequential serial numbers
  - ▶ Time intelligence functions



# Breakthrough Insight

## Power View Business Intelligence

The screenshot displays a SharePoint library interface for a document named "Auto Sales Model". The document is represented by a large icon of a document with a blue grid pattern. To the right of the icon, the title "Auto Sales Model" is displayed, along with metadata: "Last Modified By: System Account, Date: 12/15/2011" and "Created By: System Account". In the top right corner of the document area, there are two small icons: a document with a green checkmark and a document with a yellow grid pattern. A red arrow points to the yellow grid icon, which represents the Power View feature. The interface includes a top navigation bar with "Site Actions" and "Library Tools", and a left sidebar with navigation options like "Libraries", "Lists", and "Discussions".

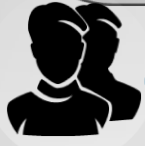
# ColumnStore Indexes

- ▶ **Faster query response time from Data Warehouses**
  - Easier data exploration
  - Better decisions
- ▶ **Reduced physical DB design effort**
  - Fewer indexes (can replace your clustered)
  - Fewer summary aggregates and indexed views
  - May eliminate need for OLAP cubes
  - Transparent to applications
- ▶ **Less hardware needed for given workload**
- ▶ **“Typical” performance improvement from 10x to 100x**

```
CREATE NONCLUSTERED COLUMNSTORE INDEX ncci  
ON myTable (OrderDate, ProductID, SaleAmount)
```



# Manageability Features



## CUSTOMERS WANT

Easier management of SSIS packages



**Integration Services Catalogs** – Manage everything about SSIS in one place

Default Location for Backup files



Ablity to set default locations for Backups, in addition to Data and Log default file locations

Smaller help installation



Import just the help topics you need using MS Help Viewer

Ability to store files and documents in a database



**FileTable** – Builds on top of FILESTREAM – store files and docs in special tables but access them from Windows applications as if they were stored in file system

Create Server Roles



**User-Defined Server Roles** – you are no longer limited to the built-in Server Roles

# Language Enhancements

- Sequence Generators
  - SEQUENCE DDL
  - NEXT VALUE FOR
  - sp\_sequence\_get\_range
  - sys.sequences
- Query Paging
  - OFFSET
  - FETCH NEXT
  - Requires ORDER BY

```
CREATE SEQUENCE SQ1 AS INT  
START WITH  
INCREMENT BY  
MINVALUE  
MAXVALUE  
CYCLE  
CACHE  
GO
```

```
SELECT FROM sys.sequences  
SELECT NEXT VALUE FOR SQ1
```

```
SELECT FROM Product  
ORDER BY StandardCost  
OFFSET ROWS  
FETCH NEXT ROWS ONLY
```



# Cloud On Your Terms



## CUSTOMERS WANT

Scale on demand



Easily move applications across on-premises and cloud with unlimited virtualization and license mobility

Fast time to market



Enable Hybrid IT to offer flexibility and choice across on-premises and cloud

Optimized productivity



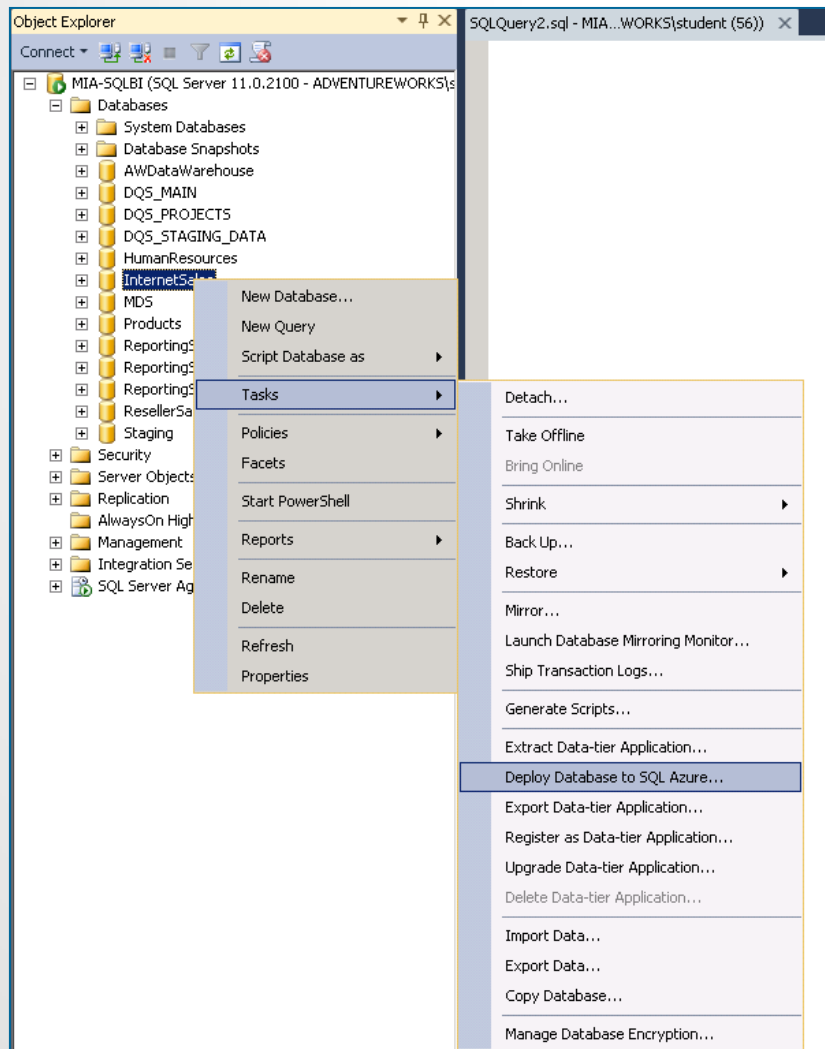
Common management & development tools: SQL Server Data Tools, T-SQL & SSMS

Extend any data, anywhere



Extend to cloud with Windows Azure Marketplace and Data Sync; Support for unstructured data & interop with PHP & Java

# Windows Azure SQL Database







## Deployment Settings

[Introduction](#)**Deployment Settings**[Summary](#)[Results](#)[Help](#)

### Specify Target Connection

Specify the name of the instance of SQL Server or the SQL Azure server that will host the deployed database, name the new database, and then click Connect to login to the target server.

Server connection:

New database name:

#### SQL Azure database settings

Edition of SQL Azure:

Maximum database size (GB):

#### Other settings

Temporary file name:

# Windows Azure SQL Database

The screenshot shows the 'Deploy Database' progress window for 'InternetSales'. The window title is 'Deploy Database 'InternetSales''. The main area is titled 'Progress' and shows a list of tasks with their status. The tasks are as follows:

Name	Status
Extracting schema from database	Success
Resolving references in schema model	Success
Validating schema model	Success
Validating schema model for data package	Success
Exporting data from database	Success
Processing table: [dbo].[Customers]	Success
Processing table: [dbo].[PaymentTypes]	Success
Processing table: [dbo].[SalesOrderDetail]	Success
Processing table: [dbo].[SalesOrderHeader]	Success
Creating database on target	Success
Creating deployment plan	Success
Verifying deployment plan	Success
Importing package schema and data into database	In Progress
Processing table: [dbo].[Customers]	Success
Processing table: [dbo].[PaymentTypes]	Success
Processing table: [dbo].[SalesOrderDetail]	In Progress

At the bottom of the window, there are three buttons: '< Previous', 'Next >', and 'Cancel'. A 'Fewer details' link is also visible below the table.

# SQL Server 2012 Licensing



## LEADING TCO

- SQL Server continues as the high-value leader
- Investments protected for customers with Software Assurance including migrations to new licensing



## PAY AS YOU GROW

- For datacenter scenarios, licensing better aligned to hardware capacity
- For business intelligence, licensing aligned to user-based access



## CLOUD OPTIMIZED

- Flexible Virtualization licensing
- License mobility enables hybrid scenarios that span on-premises and cloud



# Better Edition Alignment

## ENTERPRISE EDITION

*(Inclusive of Business Intelligence edition)*

- Mission critical and Tier 1 applications
- Data Warehousing
- Private cloud and highly virtualized environments
- Large , centralized or external facing BI



## BUSINESS INTELLIGENCE EDITION

*(Inclusive of Standard edition)*

- Corporate and scalable reporting & analytics
- Power View and Power Pivot enable self-service analytics



- Departmental databases
- Limited business intelligence projects



Datacenter Edition is being retired — all capabilities now available in Enterprise Edition.

Workgroup & Small Business Editions are being retired.

Web Edition will only be available via SPLA.

# SQL Server 2012 Editions

SQL Server Capabilities	SQL Server Editions		
	Standard	Business Intelligence	Enterprise
Maximum Number of Cores	16 cores	16 cores – DB OS Max – BI	OS Max*
Windows Server Core Edition Support	●	●	●
Basic OLTP	●	●	●
Basic Reporting & Analytics	●	●	●
Programmability & Developer Tools (T-SQL, CLR, data types, FileTable)	●	●	●
Manageability (Management studio, policy based management)	●	●	●
Enterprise Data Management (Data quality, master data services)		●	●
Self-service Business Intelligence (Power View, PowerPivot for SPS)		●	●
Corporate Business Intelligence (Semantic model, advanced analytics)		●	●
Advanced Security (Advanced auditing, transparent data encryption)			●
Data Warehousing (Column store index, compression, partitioning)			●
StreamInsight	Basic	Basic	Advanced
AlwaysOn High Availability**	Basic	Basic	Advanced

# SQL Server 2012 SKUs & Licensing

*Aligned with how businesses consume DB and business intelligence software*

Principal Editions		Licensing Options	
		Server+CAL	Core-based
<b>Enterprise</b> High-end datacenter w/ BI Server capabilities			✓
<b>Business Intelligence</b> Enterprise BI projects, user-based licensing	<b>NEW!</b>	✓	
<b>Standard</b> Departmental, limited scale		✓	✓

Customers pay for the **power** they need

Customers pay for the **users** they need

Choice of model for **basic** needs

# Next Steps

## Microsoft SQL Server 2012 Courses

**10774: Querying MS SQL Server 2012 – Five-day course.** Write basic Transact-SQL queries.

**10775: Administering MS SQL Server 2012 Databases – Five-day course.** Install, configure and maintain MS SQL Server 2012.

**10776: Developing MS SQL Server 2012 Databases – Five-day course.** Design and implement an MS SQL Server database.

**10777: Implementing a Data Warehouse with MS SQL Server 2012 – Five day course.** Build a data warehouse and validate and cleanse data.

**10778: Implementing Data Models and Reports with MS SQL Server 2012 – Five-day course.** Build multi-dimensional data models, use PowerPivot, create rich data visualizations, and perform data mining.

**Excel 2010 PowerPivot – 1 Day Desktop Course**