

SCALE INSECTS

[home](#)[about](#)[fact sheets](#)[keys](#)[gallery](#)

Kerria lacca (Kerr)

G

Family

Kerriidae

Catalog

Click here for a [Catalog](#).

Common name

Lac scale

Field characters

Body of adult female red, covered by a pliable **test** that is slightly convex with 10 small lobes around body **margin** in newly formed **tests**, but highly convex and rotund in mature **tests**; **test** has 3 openings, **anal opening** for exit of honeydew and crawlers and spiracular openings for respiratory functions, all 3 openings have protruding white wax; **tests** are either light reddish brown or yellow; individuals coalesce in heavy infestations forming encrustations that may cover entire branches; male's **test** is elongate and reddish brown with an **operculum** at **posterior** apex which is important for exit of the adult. Crawlers and adult males are bright red; males are winged or wingless. Occurring on small branches and twigs. Males are relatively common but apparently are not needed for reproduction.

Validation characters

9-12 **dimples** on **brachial plate**; **brachial plate** elevated on cylindrical structure; more than 6 **perivaginal pore clusters**; anal tubercle longer than wide; **dorsal spine** with large **pedicel**, **pedicel** unsclerotized. Other characters: One pair of **spiracles** conspicuously larger than other; conspicuous **brachial plate** with many **pores**; **dorsal spine** present **anterior** of **anal opening**; **anal area** with associated **anal fringe**; **legs** absent; **antennae** poorly developed.

Comparison

Kerria lacca is similar to *K. ebrachiata* (Chamberlin) but differs by having the **brachial plate** on a cylindrical protrusion (the **brachial plate** does not protrude on *K. ebrachiata*).

U.S. quarantine notes

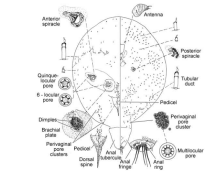
This species was intercepted once at U. S. ports-of-entry between 1995 and 2012, with the specimen originating from Taiwan. Because it remains a source of natural shellac and is transported around the world, we have included it in the key. We have examined specimens taken in quarantine from India on an unknown host. ScaleNet includes hosts in over 20 plant families from the Oriental, Nearctic, and Palaearctic zoogeographic regions. No other species of *Kerria* have been intercepted at a U. S. port-of-entry.

Important references

[Chambe1923](#); [Glover1937](#); [Varshn1976](#).

All references mentioned

[Kerria lacca](#)



Kerria lacca Illustration by Miller



Kerria lacca "Stick lac"
Photo by Avas Hamon & Jeff Lotz



Kerria lacca "Seed lac"
Photo by Alessandra Rung



Kerria lacca "Pieces of dried lac to be used to make shellac" Photo by Alessandra Rung



Kerria lacca

Scale Insects, Edition 2
Last updated April 2014

SCALENET

