

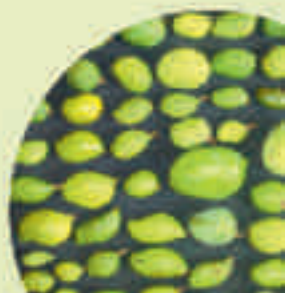


**National Fruit Catalogue of Tropical
Fruit Tree Diversity**
(Mangifera, Citrus and Garcinia)



National Fruit Catalogue of Tropical Fruit Tree Diversity *(Mangifera, Citrus and Garcinia)*

M.R.Dinesh, Shailendra Rajan , I.P.Singh , Awtar Singh, Sanjay Kumar Singh,
Vasudeva.R, Vinoth.S, Prakash Patil , V.A.Parthasarathy,
B.M.C Reddy and Bhuwon Sthapit.





PREFACE

Biological diversity envisages the multiplicity of life forms existing on earth. The components of biodiversity which maintain the current or potential human uses are referred as 'biological resources'. The Indian sub-continent is extremely rich in its plant wealth. It embraces a wide spectrum of habitats from tropical rain forests to alpine vegetation and from temperate forests to coastal wetlands. This wide range of habitat spectrum and diversity has bestowed upon her the unique distinction of being one among the twelve mega-diversity centers in the world. Indian sub-continent is also one of the eight centers of origin of cultivated plants and areas of diversity of their wild relatives as classified by Vavilov. India figures with two hotspots-the Western Ghats and Eastern Himalayas – among 18 biodiversity hotspots identified and later on this was revised and updated to 25 and the hotspots that are extended to India are the Western Ghats/Sri Lanka and Indo – Burma region. The plant wealth of India is represented by about 49,000 species which comprises about 12% of the global wealth of plants. Nearly 33% of these are endemic, mainly located in 26 centres. Among the fruit crops, India has a great place as a leading country for possessing the world's largest varietal diversity for mango. Many of these unique varieties have been conserved over centuries for their varied uses. Some of these types have even been registered as Geographical Indicators. Garcinia has a great diversity in Western Ghats and is considered as a non timber product of the forest.

In order to protect the diversity of Tropical Fruit Tree Genetic Resources (TFTGR) in situ and through on farm conservation through sustainable management practices which would benefit the rural communities and to develop the capacity and leadership skills for managing this diversity, Bioversity International along with ICAR is executing United Nations Environment Programme (UNEP) funded by Global Environment Facility (GEF). This project is being operated in five sites, namely, Amravati (Maharashtra), Chittoor (Seemandhra/Andhra), Malihabad (U.P.), Pusa (Bihar) and Sirsi (Karnataka) on three fruit crops viz., Mango, Citrus and Garcinia. A great amount of diversity has been assembled in Farmers' fields in situ as well as in Gene banks of the ICAR institutes. The identification of the unique varieties of these crops along with the details of the Custodian Farmers (CF) has been documented in the form of a catalogue entitled "National Fruit Catalogue of Tropical Fruit Tree Diversity (Mangifera, Citrus and Garcinia). The catalogues lists 121 mango varieties, 21 Citrus (Pummelo, Lime, lemon, Sweet Orange and Mandarin Orange) and two Garcinia indica. Efforts have been made to register the unique mango varieties through the Protection of Plant Varieties and Farmers' Rights Authority (PPV&FRA). This is a parallel of the UPOV operating in Europe. Thus the registration of the varieties would benefit the farmers/communities as they would become the legal owners of this.

We hope the catalogue would be of great use to all those interested in genetic resources, horticulture and social scientists. We have given due credit to those farmers' and communities who have conserved them and are happy to share knowledge and materials. We are grateful to Dr.N.K.Krishnakumar and Dr.H.P.Singh (present and past DDG (Hort.), Dr.Prem Mathur, Regional Director, Bioversity International and Dr.V.Ramanatha Rao, Technical Advisor, Bioversity International.

Authors



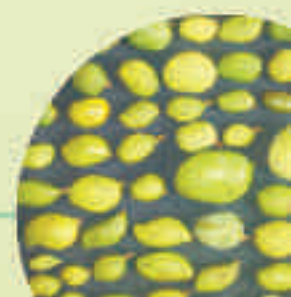
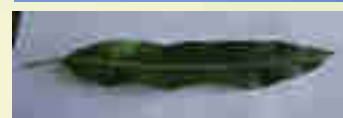
Contents

	Page no.
Preface	i
1. Mango	
i. Amravati	1
ii. Chittoor	13
iii. Malihabad	51
iv. Pusa	93
v. Sirsi	109
2. Citrus	
i. Amravati	122
ii. Pusa	130
3. Garcinia	
i. Sirsi	143



AMRAVATI

Farmer's name	Ganesh Wankhade
Farm location	Village -Jarud, Tah. – Warud, Amravati, Maharashtra
Longitude	78° 16'55.2"
Latitude	21°23'46.4"
Altitude(m)	385
IC Number	596045
Code Name	Amravati Amba-1
Local vernacular name(s)	Shindhuri Aam
Meaning of local name	Indigenous seedling type (outer skin sindhuri colour)
Relative abundance of the Variety (Average Trees/HH numbers)	Low Farmer
pictorial representation	
Distinguishing traits used by farmers to identify their variety or plant (A narration than by farmers on their variety taking into account minor differences in Colour, shape, size, width, length, height texture, habit, taste and including the following plant parts involved, Fruit, leaf, Tree Canopy, Flower, Stem/trunk, Stone)	
Colour	Green yellow with Sindhuri patches
Shape	Oblong
Growth	Tall
Fruit	Oblong
Leaf	Lean and wide
Canopy	Spherical
Flower	Full
Stem/trunk	Smooth
Stone	Medium thin and oblong
Main reasons for maintaining diversity by farmers	
Quality traits (Eating quality, taste, flavour (Sweet, Acid, sour-sweet etc.), aroma, pulp texture (firm, juicy, fibrous, etc..))	Sweet (Sucking type mango) fibrous
Market traits [Marketability, transportability, Shelf life]	Good
Main use of plant [Home use, sale, Exchange (neighbour, friends, family)]	Home use , family and friends
Conservation actions	Conserved at Jarud <i>in situ</i> and one set will be conserved at IIHR, Bangalore . 500 plants were regenerated for distribution to the community.

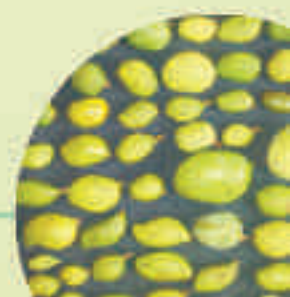




Farmer's name	Mangesh Thakre
Farm location	Village - Jarud, Tah. - Warud, Amravati, Maharashtra
Longitude	78° 13'10.7"
Latitude	21°27'34.9"
Altitude(m)	407
IC Number	596046
Code Name	Amravati Amba- 5
Local vernacular name(s)	Biju Aam
Meaning of local name	Indigenous seedling type
Relative abundance of the Variety (Average Trees/HH numbers)	Low Farmer
pictorial representation	Distinguishing traits used by farmers to identify their variety or plant (A narration than by farmers on their variety taking into account minor differences in Colour, shape, size, width, length, height texture, habit, taste and including the following plant parts involved, Fruit, leaf, Tree Canopy, Flower, Stem/trunk, Stone)
Colour Skin/ Colour pulp	Light yellow / orange
Shape	Oblong
Growth	Tall
Fruit	Oblong
Leaf	Narrow and wide
Canopy	Spherical
Flower	Full
Stem/trunk	Smooth
Stone	Thin and oblong
Main reasons for maintaining diversity by farmers	
Quality traits (Eating quality, taste, flavour (Sweet, Acid, sour-sweet etc.), aroma, pulp texture (firm, juicy, fibrous, etc..)]	Medium and fibrous
Market traits [Marketability, transportability, Shelf life]	Medium
Main use of plant [Home use, sale, Exchange (neighbour, friends, family)]	Home use , family
Conservation actions	Conserved at Jarud <i>in situ</i>

AMRAVATI

Farmer's name	Shridhar Solao
Farm location	Village - Bargaon Tah. – Warud, Amravati, Maharashtra
Longitude	078°08'28.1"
Latitude	21°26'42.8"
Altitude(m)	431
IC Number	596047
Code Name	Amravati Amba- 6
Local vernacular name(s)	Mulgoa
Meaning of local name	Mango cultivar
Relative abundance of the Variety (Average Trees/HH numbers)	Low Farmer
pictorial representation	
Distinguishing traits used by farmers to identify their variety or plant (A narration than by farmers on their variety taking into account minor differences in Colour, shape, size, width, length, height texture, habit, taste and including the following plant parts involved, Fruit, leaf, Tree Canopy, Flower, Stem/trunk, Stone)	
Colour Skin/ Colour pulp	Golden yellow / Dark yellow
Shape	Oblong
Growth	Medium
Fruit	Oblong and big
Leaf	wide
Canopy	Spherical
Flower	Full
Stem/trunk	Smooth
Stone	Thin and oblong
Main reasons for maintaining diversity by farmers	
Quality traits (Eating quality, taste, flavour (Sweet, Acid, sour-sweet etc.), aroma, pulp texture (firm, juicy, fibrous, etc..))	Excellent quality, firm
Market traits [Marketability, transportability, Shelf life]	Very good
Main use of plant [Home use, sale, Exchange (neighbour, friends, family)]	Home use , family and friends
Conservation actions	Conserved at Jarud <i>in situ</i> and one set will be conserved at IIHR, Bangalore

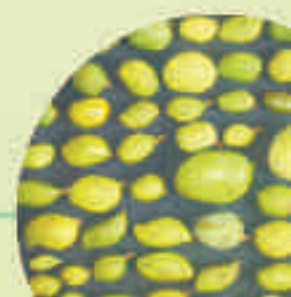
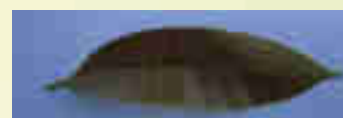




Farmer's name	Shridhar Solao
Farm location	Village - Bargaon Tah. – Warud, Amravati, Maharashtra
Longitude	078°08'28.1"
Latitude	21°26'42.8"
Altitude(m)	431
IC Number	596048
Code Name	Amravati Amba- 7
Local vernacular name(s)	Achar Aam
Meaning of local name	Indigenous seedling type for pickles preparation
Relative abundance of the Variety (Average Trees/HH numbers)	Low Farmer
pictorial representation	
Distinguishing traits used by farmers to identify their variety or plant (A narration than by farmers on their variety taking into account minor differences in Colour, shape, size, width, length, height texture, habit, taste and including the following plant parts involved, Fruit, leaf, Tree Canopy, Flower, Stem/trunk, Stone)	
Colour Skin	Green yellow
Colour pulp	yellow orange
Shape	Round
Growth	Tall
Fruit	Round and small
Leaf	Narrow and wide
Canopy	Spherical
Flower	Full
Stem/trunk	Smooth
Stone	Thin and oblong
Main reasons for maintaining diversity by farmers	
Quality traits (Eating quality, taste, flavour (Sweet, Acid, sour-sweet etc.), aroma, pulp texture (firm, juicy, fibrous, etc..)]	Medium fruit quality, medium pulp texture and fibrous, sucking type mango
Market traits [Marketability, transportability, Shelf life]	Good for pickles
Main use of plant [Home use, sale, Exchange (neighbour, friends, family)]	Home use , family and preparation of pickles
Conservation actions	Conserved at Jarud <i>in situ</i>

AMRAVATI

Farmer's name	Shridhar Solao
Farm location	Village - Bargaon Tah. – Warud, Amravati, Maharashtra
Longitude	078°08'28.1"
Latitude	21°26'42.8"
Altitude(m)	430
IC Number	596049
Code Name	Amravati Amba- 8
Local vernacular name(s)	Biju Aam
Meaning of local name	Indigenous seedling type
Relative abundance of the Variety (Average Trees/HH numbers)	Low Farmer
pictorial representation	
Distinguishing traits used by farmers to identify their variety or plant (A narration than by farmers on their variety taking into account minor differences in Colour, shape, size, width, length, height texture, habit, taste and including the following plant parts involved, Fruit, leaf, Tree Canopy, Flower, Stem/trunk, Stone)	
Colour Skin	Green yellow
Colour pulp	orange
Shape	Oblong
Growth	Small
Fruit	Oblong and medium
Leaf	Narrow and wide
Canopy	Spherical
Flower	Full
Stem/trunk	Smooth
Stone	Thick and round
Main reasons for maintaining diversity by farmers	
Quality traits (Eating quality, taste, flavour (Sweet, Acid, sour-sweet etc.), aroma, pulp texture (firm, juicy, fibrous, etc..)]	Sweet
Market traits [Marketability, transportability, Shelf life]	Very good
Main use of plant [Home use, sale, Exchange (neighbour, friends, family)]	Home use , family
Conservation actions	Conserved at Jarud <i>in situ</i> and one set will be conserved at IIHR, Bangalore

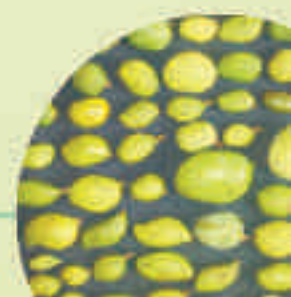
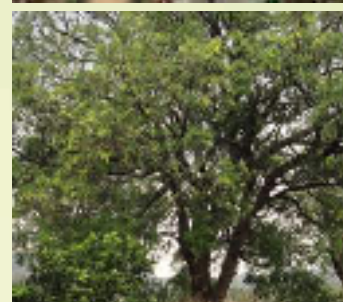




Farmer's name	Shridhar Solao
Farm location	Village - Bargaon Tah. – Warud, Amravati, Maharashtra
Longitude	078°08'28.1"
Latitude	21°26'42.8"
Altitude(m)	431
IC Number	596050
Code Name	Amravati Amba- 9
Local vernacular name(s)	Seedling Aam
Meaning of local name	Indigenous seedling type
Relative abundance of the Variety (Average Trees/HH numbers)	Low Farmer
pictorial representation	Distinguishing traits used by farmers to identify their variety or plant (A narration than by farmers on their variety taking into account minor differences in Colour, shape, size, width, length, height texture, habit, taste and including the following plant parts involved, Fruit, leaf, Tree Canopy, Flower, Stem/trunk, Stone)
Colour Skin	Green yellow
Colour pulp	Yellow
Shape	Oblong and medium
Growth	Tall
Fruit	Oblong and medium
Leaf	Narrow and wide
Canopy	Spherical
Flower	Full
Stem/trunk	Smooth
Stone	Thick and oblong
Main reasons for maintaining diversity by farmers	
Quality traits (Eating quality, taste, flavour (Sweet, Acid, sour-sweet etc.), aroma, pulp texture (firm, juicy, fibrous, etc..)]	Juicy fibrous sucking type mango
Market traits [Marketability, transportability, Shelf life]	good
Main use of plant [Home use, sale, Exchange (neighbour, friends, family)]	Home use , family
Conservation actions	Conserved at Jarud <i>in situ</i>

AMRAVATI

Farmer's name	Shridhar Solao
Farm location	Village - Bargaon Tah. – Warud, Amravati, Maharashtra
Longitude	078°08'28.1"
Latitude	21°26'42.8"
Altitude(m)	431
IC Number	596051
Code Name	Amravati Amba-10
Local vernacular name(s)	Biju Aam
Meaning of local name	Indigenous seedling type
Relative abundance of the Variety (Average Trees/HH numbers)	Low Farmer
<p>pictorial representation</p> <p>Distinguishing traits used by farmers to identify their variety or plant (A narration than by farmers on their variety taking into account minor differences in Colour, shape, size, width, length, height texture, habit, taste and including the following plant parts involved, Fruit, leaf, Tree Canopy, Flower, Stem/trunk, Stone)</p>	
Colour Skin	Light yellow
Colour pulp	Yellow
Shape	Round
Growth	Tall
Fruit	Round and medium
Leaf	Narrow and wide
Canopy	Spherical
Flower	Full
Stem/trunk	Smooth
Stone	Thick and oblong
Main reasons for maintaining diversity by farmers	
Quality traits (Eating quality, taste, flavour (Sweet, Acid, sour-sweet etc.), aroma, pulp texture (firm, juicy, fibrous, etc..)]	Fibrous, juicy sucking type mango
Market traits [Marketability, transportability, Shelf life]	Good
Main use of plant [Home use, sale, Exchange (neighbour, friends, family)]	Home use , family
Conservation actions	Conserved at Jarud <i>in situ</i> and one set will be conserved at IIHR, Bangalore

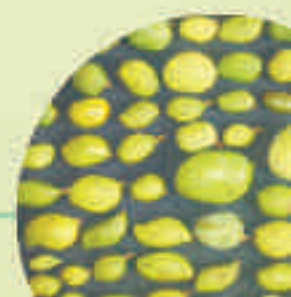




Farmer's name	Shridhar Solao
Farm location	Village - Bargaon Tah. - Warud, Amravati, Maharashtra
Longitude	078°08'28.1"
Latitude	21°26'42.8"
Altitude(m)	431
IC Number	596052
Code Name	Amravati Amba-11
Local vernacular name(s)	Aam Seedling
Meaning of local name	Indigenous seedling type
Relative abundance of the Variety (Average Trees/HH numbers)	Low Farmer
pictorial representation	
Distinguishing traits used by farmers to identify their variety or plant (A narration than by farmers on their variety taking into account minor differences in Colour, shape, size, width, length, height texture, habit, taste and including the following plant parts involved, Fruit, leaf, Tree Canopy, Flower, Stem/trunk, Stone)	
Colour Skin	Light yellow
Colour pulp	Light orange
Shape	Round
Growth	Small
Fruit	Round and medium
Leaf	Narrow and wide
Canopy	Spherical
Flower	Full
Stem/trunk	Smooth
Stone	Thick and oblong
Main reasons for maintaining diversity by farmers	
Quality traits (Eating quality, taste, flavour (Sweet, Acid, sour-sweet etc.), aroma, pulp texture (firm, juicy, fibrous, etc..)]	Sweet sucking type mango, fibrous and juicy
Market traits [Marketability, transportability, Shelf life]	Good
Main use of plant [Home use, sale, Exchange (neighbour, friends, family)]	Home use , family
Conservation actions	Conserved at Jarud <i>in situ</i>

AMRAVATI

Farmer's name	Ramesh P. Jichkar
Farm location	Village - Nagziri Tah. - Warud, Amravati, Mahatashtra
Longitude	078° 09' 10.3"
Latitude	21° 26' 55.4"
Altitude(m)	436
IC Number	596053
Code Name	Amravati Amba-12
Local vernacular name(s)	Gawran Aam or Desi Aam
Meaning of local name	Indigenous seedling type
Relative abundance of the Variety (Average Trees/HH numbers) pictorial representation	Low Farmer
Distinguishing traits used by farmers to identify their variety or plant (A narration than by farmers on their variety taking into account minor differences in Colour, shape, size, width, length, height texture, habit, taste and including the following plant parts involved, Fruit, leaf, Tree Canopy, Flower, Stem/trunk, Stone)	
Colour Skin	Light green
Colour pulp	Orange
Shape	Oblong
Growth	Medium
Fruit	Oblong and medium
Leaf	Narrow and wide
Canopy	Spherical
Flower	Full
Stem/trunk	Smooth
Stone	Thin and round
Main reasons for maintaining diversity by farmers	
Quality traits (Eating quality, taste, flavour (Sweet, Acid, sour-sweet etc.), aroma, pulp texture (firm, juicy, fibrous, etc..))	Sweet sucking type mango
Market traits [Marketability, transportability, Shelf life]	Good
Main use of plant [Home use, sale, Exchange (neighbour, friends, family)]	Home use , family
Conservation actions	Conserved at Jarud <i>in situ</i>

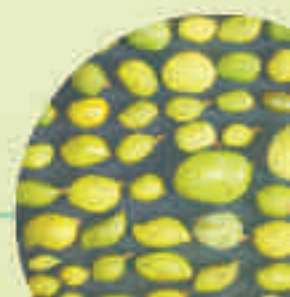




Farmer's name	Ramesh P. Jichkar
Farm location	Village - Nagziri Tah. – Warud, Amravati, Maharashtra
Longitude	078° 09' 10.3"
Latitude	21° 26' 55.4"
Altitude(m)	436
IC Number	596054
Code Name	Amravati Amba-13
Local vernacular name(s)	Gavran Mango
Meaning of local name	Indigenous seedling type
Relative abundance of the Variety (Average Trees/HH numbers) pictorial representation	Low Farmer
Distinguishing traits used by farmers to identify their variety or plant (A narration than by farmers on their variety taking into account minor differences in Colour, shape, size, width, length, height texture, habit, taste and including the following plant parts involved, Fruit, leaf, Tree Canopy, Flower, Stem/trunk, Stone)	
Colour Skin	Yellow green patches
Colour pulp	Medium yellow
Shape	Oblong
Growth	Mediuml
Fruit	Oblong and medium
Leaf	Narrow and wide
Canopy	Spherical
Flower	Full
Stem/trunk	Smooth
Stone	Medium thick and oblong
Main reasons for maintaining diversity by farmers	
Quality traits (Eating quality, taste, flavour (Sweet, Acid, sour-sweet etc.), aroma, pulp texture (firm, juicy, fibrous, etc..)]	Sweet and juicy
Market traits [Marketability, transportability, Shelf life]	Good
Main use of plant [Home use, sale, Exchange (neighbour, friends, family)]	Home use , family
Conservation actions	Conserved at Jarud <i>in situ</i>

AMRAVATI

Farmer's name	Umesh Fuse
Farm location	Village - Jarud, Tah. - Warud, Amravati, Maharashtra
Longitude	78° 16'55.2"
Latitude	21°23'46.4"
Altitude(m)	385
IC Number	596055
Code Name	Amravati Amba-15
Local vernacular name(s)	Gavran Mango
Meaning of local name	Indigenous seedling type
Relative abundance of the Variety (Average Trees/HH numbers)	Low Farmer
pictorial representation	
Distinguishing traits used by farmers to identify their variety or plant (A narration than by farmers on their variety taking into account minor differences in Colour, shape, size, width, length, height texture, habit, taste and including the following plant parts involved, Fruit, leaf, Tree Canopy, Flower, Stem/trunk, Stone)	
Colour Skin	Green yellow
Colour pulp	Medium yellow
Shape	Oblong
Growth	Medium
Fruit	Oblong and medium
Leaf	Narrow and wide
Canopy	Spherical
Flower	Full
Stem/trunk	Smooth
Stone	Medium and oblong
Main reasons for maintaining diversity by farmers	
Quality traits (Eating quality, taste, flavour (Sweet, Acid, sour-sweet etc.), aroma, pulp texture (firm, juicy, fibrous, etc..)]	Sweet
Market traits [Marketability, transportability, Shelf life]	Good
Main use of plant [Home use, sale, Exchange (neighbour, friends, family)]	Home use , family
Conservation actions	Conserved at Jarud <i>in situ</i>

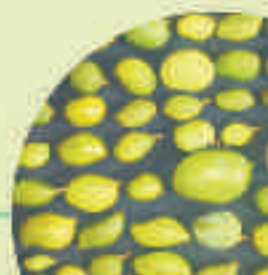
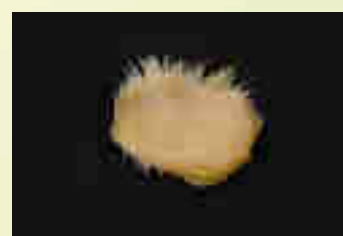




Farmer's name	Puransingh Patel
Farm location	Village - Jangaon Tah. - Warud, Amravati, Mahatashtra
Longitude	78° 07' 14.2"
Latitude	21° 27'02.0"
Altitude(m)	414
IC Number	596056
Code Name	Amravati Amba-17
Local vernacular name(s)	Patel Aam
Meaning of local name	Indigenous seedling type (this is known as patel aam in locality)
Relative abundance of the Variety (Average Trees/HH numbers)	Low Farmer
pictorial representation	Distinguishing traits used by farmers to identify their variety or plant (A narration than by farmers on their variety taking into account minor differences in Colour, shape, size, width, length, height texture, habit, taste and including the following plant parts involved, Fruit, leaf, Tree Canopy, Flower, Stem/trunk, Stone)
Colour Skin	Yellow Green
Colour pulp	Orange colour
Shape	Round
Growth	Vigorous and tall
Fruit	Round and medium
Leaf	Narrow and wide
Canopy	Spherical
Flower	Full
Stem/trunk	Smooth
Stone	Medium and oblong
Main reasons for maintaining diversity by farmers	Since it produce best quality tasty fruit
Quality traits (Eating quality, taste, flavour (Sweet, Acid, sour-sweet etc.), aroma, pulp texture (firm, juicy, fibrous, etc..)]	Sweet juicy sucking type mango and fibrous with good aroma
Market traits [Marketability, transportability, Shelf life]	Very good it is sold in local market by it name Patel mango and getting good price due best quality
Main use of plant [Home use, sale, Exchange (neighbour, friends, family)]	Home use , family , neighbour, friends and sale
Conservation actions	Conserved at Jarud <i>in situ</i> and one set will be conserved at IIHR, Bangalore. About 2000 plants were regenerated for distribution to the community

CHITTOOR

Farmer Name	Sriramulu Achary
Farm location	Talupulapalli, Chittoor, Andhra Pradesh
Longitude	79.0326
Latitude	13.2340
Altitude (m)	360
IC Number	591283
Local vernacular name(s)	Talupulapalli Sriramulu Achary Naati 4
Code Name	TSAN4
Meaning of local name	Indigenous seedling type having farmer's name
Relative abundance of the Variety (Average Trees/HH numbers)	One Farmer
Pictorial representation	
Distinguishing traits used by farmers to identify their variety or plant (A narration than by farmers on their variety taking into account minor differences in Colour, shape, size, width, length, height texture, habit, taste and including the following plant parts involved, Fruit, leaf, Tree Canopy, Flower, Stem/trunk, Stone)	
Colour	Light yellow
Shape	Round
Growth	Small
Fruit	Big
Leaf	Lean and wide
Canopy	Spherical
Flower	Dark Red
Stem/trunk	Smooth
Stone	Thin and round
Main reasons for maintaining diversity by farmers	
Quality traits [Eating quality, taste, flavour (Sweet, Acid, sour-sweet etc.), aroma, pulp texture (firm, juicy, fibrous, etc.)]:	Sweet
Market traits [Marketability, transportability, Shelf life]	Good
Main use of plant [Home use, sale, Exchange (neighbour, friends, family)]	Home use. Table purpose
Conservation actions	Conserved at IIHR and in two diversity parks at the local site.

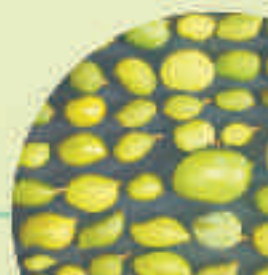


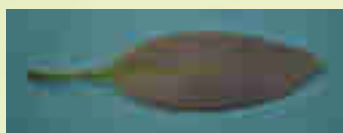


Farmer Name	Sriramulu Achary
Farm location	Talupulapalli, Chittoor, Andhra Pradesh
Longitude	79.0326
Latitude	13.2340
Altitude (m)	360
IC Number	591284
Local vernacular name(s)	Talupulapalli Sriramulu Achary Naati 6
Code Name	TSAN6
Meaning of local name	Indigenous seedling type having farmer's name
Relative abundance of the Variety (Average Trees/HH numbers)	One Farmer
Pictorial representation	Distinguishing traits used by farmers to identify their variety or plant (A narration than by farmers on their variety taking into account minor differences in Colour, shape, size, width, length, height texture, habit, taste and including the following plant parts involved, Fruit, leaf, Tree Canopy, Flower, Stem/trunk, Stone)
Colour	Orange
Shape	Oblong
Growth	Medium
Fruit	Medium
Leaf	Lengthy and wide
Canopy	Semi-circular
Flower	Dark Red
Stem/trunk	Rough
Stone	Thin and medium Size
Main reasons for maintaining diversity by farmers	
Quality traits [Eating quality, taste, flavour (Sweet, Acid, sour-sweet etc.), aroma, pulp texture (firm, juicy, fibrous, etc.,)]:	Very taste
Market traits [Marketability, transportability, Shelf life]	Good
Main use of plant [Home use, sale, Exchange (neighbour, friends, family)]	Home use & exchange with neighbours. Table purpose
Conservation actions	Conserved at IIHR and in two diversity parks at the local site.

CHITTOOR

Farmer Name	Sriramulu Achary
Farm location	Talupulapalli, Chittoor, Andhra Pradesh
Longitude	79.0326
Latitude	13.2340
Altitude (m)	360
IC Number	591285
Local vernacular name(s)	Talupulapalli Sriramulu Achary Naati 8
Code Name	TSAN8
Meaning of local name	Indigenous seedling type having farmer's name
Relative abundance of the Variety (Average Trees/HH numbers) Pictorial representation	One Farmer
Distinguishing traits used by farmers to identify their variety or plant (A narration than by farmers on their variety taking into account minor differences in Colour, shape, size, width, length, height texture, habit, taste and including the following plant parts involved, Fruit, leaf, Tree Canopy, Flower, Stem/trunk, Stone)	
Colour	Yellow
Shape	Round
Growth	Small
Fruit	Small
Leaf	Wide and lengthy
Canopy	Spherical
Flower	Dark Red
Stem/trunk	Smooth
Stone	Small round
Main reasons for maintaining diversity by farmers	
Quality traits [Eating quality, taste, flavour (Sweet, Acid, sour- sweet etc.), aroma, pulp texture (firm, juicy, fibrous, etc.,)]	Sweet
Market traits [Marketability, transportability, Shelf life]	Medium
Main use of plant [Home use, sale, Exchange (neighbour, friends, family)]	Home use & sale. Table purpose
Conservation actions	Conserved at IIHR and in two diversity parks at the local site.

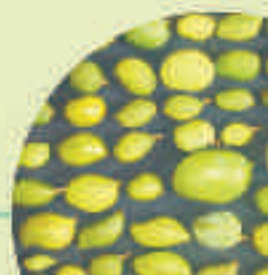
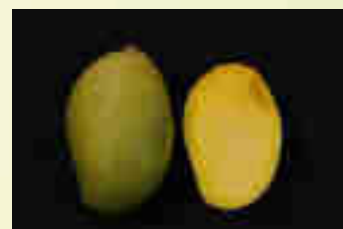




Farmer Name	Babi Reddy
Farm location	Talupulapalli, Chittoor, Andhra Pradesh
Longitude	79.0326
Latitude	13.2340
Altitude (m)	360
IC Number	591286
Local vernacular name(s)	Lalbaba
Code Name	TBRLB
Meaning of local name	Reddish old man
Relative abundance of the Variety (Average Trees/HH numbers)	Available in 2 community
Pictorial representation	
Distinguishing traits used by farmers to identify their variety or plant (A narration than by farmers on their variety taking into account minor differences in Colour, shape, size, width, length, height texture, habit, taste and including the following plant parts involved, Fruit, leaf, Tree Canopy, Flower, Stem/trunk, Stone)	
Colour	White
Shape	Round
Growth	Heavy
Fruit	Medium
Leaf	Small and lean
Canopy	Spherical
Flower	Light Red
Stem/trunk	Rough
Stone	Round and small
Main reasons for maintaining diversity by farmers	
Quality traits [Eating quality, taste, flavour (Sweet, Acid, sour-sweet etc.), aroma, pulp texture (firm, juicy, fibrous, etc.,)]	Sweet and sour
Market traits [Marketability, transportability, Shelf life]	Medium
Main use of plant [Home use, sale, Exchange (neighbour, friends, family)]	Home use & sale. Table purpose
Conservation actions	Conserved at IIHR and in two diversity parks at the local site.

CHITTOOR

Farmer Name	Babi Reddy
Farm location	Talupulapalli, Chittoor, Andhra Pradesh
Longitude	79.0326
Latitude	13.2340
Altitude (m)	360
IC Number	591287
Local vernacular name(s)	Dilpasand
Code Name	TBRD
Meaning of local name	Fruit which brings happiness
Relative abundance of the Variety (Average Trees/HH numbers)	Available in 3 community
<p>pictorial representation</p> <p>Distinguishing traits used by farmers to identify their variety or plant (A narration than by farmers on their variety taking into account minor differences in Colour, shape, size, width, length, height texture, habit, taste and including the following plant parts involved, Fruit, leaf, Tree Canopy, Flower, Stem/trunk, Stone)</p>	
Colour	Light yellow
Shape	Oblong
Growth	Heavy
Fruit	Big
Leaf	Lean and lengthy
Canopy	Semi-circular
Flower	Light Green
Stem/trunk	Rough
Stone	Long and thick
Main reasons for maintaining diversity by farmers	
Quality traits [Eating quality, taste, flavour (Sweet, Acid, sour-sweet etc.), aroma, pulp texture (firm, juicy, fibrous, etc.,)]	Low sweet
Market traits [Marketability, transportability, Shelf life]	Good
Main use of plant [Home use, sale, Exchange (neighbour, friends, family)]	Sale. Table purpose
Conservation actions	Conserved at IIHR and in two diversity parks at the local site.



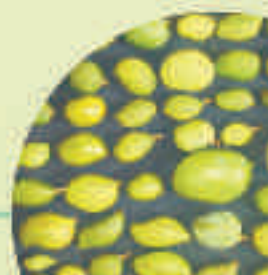


Farmer Name	Babi Reddy
Farm location	Talupulapalli, Chittoor, Andhra Pradesh
Longitude	79.0326
Latitude	13.2340
Altitude (m)	360
IC Number	591288
Local vernacular name(s)	Thorappadi variant 2
Code Name	TBRTV2
Meaning of local name	Fruit named after village Thorappadi
Relative abundance of the Variety (Average Trees/HH numbers)	One Farmer
Pictorial representation	Distinguishing traits used by farmers to identify their variety or plant (A narration than by farmers on their variety taking into account minor differences in Colour, shape, size, width, length, height texture, habit, taste and including the following plant parts involved, Fruit, leaf, Tree Canopy, Flower, Stem/trunk, Stone)
Colour	White
Shape	Oblong
Growth	Heavy
Fruit	Big
Leaf	Long and wide
Canopy	Semi-circular
Flower	Light Green
Stem/trunk	Rust and smooth
Stone	Lengthy and thick
Main reasons for maintaining diversity by farmers	
Quality traits [Eating quality, taste, flavour (Sweet, Acid, sour-sweet etc.), aroma, pulp texture (firm, juicy, fibrous, etc.,)]	Good
Market traits [Marketability, transportability, Shelf life]	Very good
Main use of plant [Home use, sale, Exchange (neighbour, friends, family)]	Home use & sale. Table purpose
Conservation actions	Conserved at IIHR and in two diversity parks at the local site.



CHITTOOR

Farmer Name	Babi Reddy
Farm location	Talupulapalli, Chittoor, Andhra Pradesh
Longitude	79.0326
Latitude	13.2340
Altitude (m)	360
IC Number	591289
Local vernacular name(s)	Talupulapalli Babi Reddy Naati 2
Code Name	TBRN2
Meaning of local name	Indigenous seedling type having farmer's name
Relative abundance of the Variety (Average Trees/HH numbers) pictorial representation	One Farmer
Distinguishing traits used by farmers to identify their variety or plant (A narration than by farmers on their variety taking into account minor differences in Colour, shape, size, width, length, height texture, habit, taste and including the following plant parts involved, Fruit, leaf, Tree Canopy, Flower, Stem/trunk, Stone)	
Colour	Orange with yellow
Shape	Oblong
Growth	Medium
Fruit	Big
Leaf	Lean and lengthy
Canopy	Semi-circular
Flower	Light Green
Stem/trunk	Smooth
Stone	Lean and lengthy
Main reasons for maintaining diversity by farmers	
Quality traits [Eating quality, taste, flavour (Sweet, Acid, sour-sweet etc.), aroma, pulp texture (firm, juicy, fibrous, etc.,)]	Sweet
Market traits [Marketability, transportability, Shelf life]	Very good
Main use of plant [Home use, sale, Exchange (neighbour, friends, family)]	Home use & exchange with Neighbour. Table purpose
Conservation actions	Conserved at IIHR and in two diversity parks at the local site.



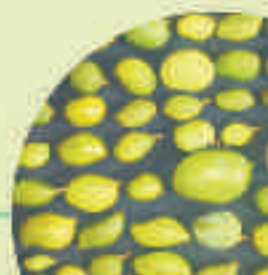


Farmer Name	Babi Reddy
Farm location	Talupulapalli, Chittoor, Andhra Pradesh
Longitude	79.0326
Latitude	13.2340
Altitude (m)	360
IC Number	591290
Local vernacular name(s)	Bogam Rangasani
Code Name	TBRBR
Meaning of local name	Name of a prostitute
Relative abundance of the Variety (Average Trees/HH numbers)	One Farmer
Pictorial representation	
Distinguishing traits used by farmers to identify their variety or plant (A narration than by farmers on their variety taking into account minor differences in colour, shape, size, width, length, height texture, habit, taste and including the following plant parts involved, Fruit, leaf, Tree Canopy, Flower, Stem/trunk, Stone)	
Colour	Red with yellow
Shape	Oblong
Growth	Medium
Fruit	Big
Leaf	Lean and lengthy
Canopy	Semi-circular
Flower	Greenish Red
Stem/trunk	Smooth
Stone	Round and small
Main reasons for maintaining diversity by farmers	
Quality traits [Eating quality, taste, flavour (Sweet, Acid, sour-sweet etc.), aroma, pulp texture (firm, juicy, fibrous, etc.,)]	Sweet
Market traits [Marketability, transportability, Shelf life]	Very good
Main use of plant [Home use, sale, Exchange (neighbour, friends, family)]	Home use & exchange with friends. Table purpose
Conservation actions	Conserved at IIHR and in two diversity parks at the local site.



CHITTOOR

Farmer Name	Babi Reddy
Farm location	Talupulapalli, Chittoor, Andhra Pradesh
Longitude	79.0326
Latitude	13.2340
Altitude (m)	360
IC Number	591291
Local vernacular name(s)	Chittithota
Code Name	TBRC
Meaning of local name	Small orchard fruit
Relative abundance of the Variety (Average Trees/HH numbers)	Available in 3 community
pictorial representation	
Distinguishing traits used by farmers to identify their variety or plant (A narration than by farmers on their variety taking into account minor differences in Colour, shape, size, width, length, height texture, habit, taste and including the following plant parts involved, Fruit, leaf, Tree Canopy, Flower, Stem/trunk, Stone)	
Colour	White
Shape	Oblong
Growth	Heavy
Fruit	Big
Leaf	Lean and lengthy
Canopy	Semi-circular
Flower	Light Green
Stem/trunk	Smooth
Stone	Thotapuri type
Main reasons for maintaining diversity by farmers	
Quality traits [Eating quality, taste, flavour (Sweet, Acid, sour-sweet etc.), aroma, pulp texture (firm, juicy, fibrous, etc.,)]	Low sweet
Market traits [Marketability, transportability, Shelf life]	Good
Main use of plant [Home use, sale, Exchange (neighbour, friends, family)]	Sale. Table purpose
Conservation actions	Conserved at IIHR and in two diversity parks at the local site.

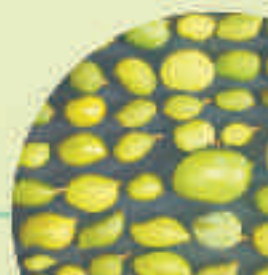
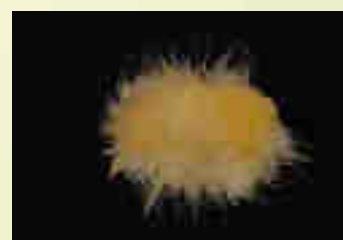




Farmer Name	Sreeramulu Pillai
Farm location	Talupulapalli, Chittoor, Andhra Pradesh
Longitude	79.0326
Latitude	13.2340
Altitude (m)	360
IC Number	591292
Local vernacular name(s)	Talupulapalli Sreeramulu Pillai Naati 1
Code Name	TSPN1
Meaning of local name	Indigenous seedling type having farmer's name
Relative abundance of the Variety (Average Trees/HH numbers)	One Farmer
Pictorial representation	
Distinguishing traits used by farmers to identify their variety or plant (A narration than by farmers on their variety taking into account minor differences in Colour, shape, size, width, length, height texture, habit, taste and including the following plant parts involved, Fruit, leaf, Tree Canopy, Flower, Stem/trunk, Stone)	
Colour	Orange
Shape	Oblong
Growth	Medium
Fruit	Small
Leaf	Lean and lengthy
Canopy	Semi-circular
Flower	Light Greenish
Stem/trunk	Smooth
Stone	Medium size
Main reasons for maintaining diversity by farmers	
Quality traits [Eating quality, taste, flavour (Sweet, Acid, sour-sweet etc.), aroma, pulp texture (firm, juicy, fibrous, etc.,)]	Sweet
Market traits [Marketability, transportability, Shelf life]	Very good
Main use of plant [Home use, sale, Exchange (neighbour, friends, family)]	Home use & exchange with friends. Table purpose
Conservation actions	Conserved at IIHR and in two diversity parks at the local site.

CHITTOOR

Farmer Name	Sreeramulu Pillai
Farm location	Talupulapalli, Chittoor, Andhra Pradesh
Longitude	79.0326
Latitude	13.2340
Altitude (m)	360
IC Number	591293
Local vernacular name(s)	Talupulapalli Sreeramulu Pillai Naati 2
Code Name	TSPN2
Meaning of local name	Indigenous seedling type having farmer's name
Relative abundance of the Variety (Average Trees/HH numbers)	One Farmer
Pictorial representation	
Distinguishing traits used by farmers to identify their variety or plant (A narration than by farmers on their variety taking into account minor differences in Colour, shape, size, width, length, height texture, habit, taste and including the following plant parts involved, Fruit, leaf, Tree Canopy, Flower, Stem/trunk, Stone)	
Colour	Light yellow
Shape	Round
Growth	Medium
Fruit	Big
Leaf	Lean and long
Canopy	Broadly pyramidal
Flower	Dark Greenish
Stem/trunk	Rough
Stone	Thin and long
Main reasons for maintaining diversity by farmers	
Quality traits [Eating quality, taste, flavour (Sweet, Acid, sour-sweet etc.), aroma, pulp texture (firm, juicy, fibrous, etc.,)]	Very sweet
Market traits [Marketability, transportability, Shelf life]	Good
Main use of plant [Home use, sale, Exchange (neighbour, friends, family)]	Sale. Table purpose
Conservation actions	Conserved at IIHR and in two diversity parks at the local site.



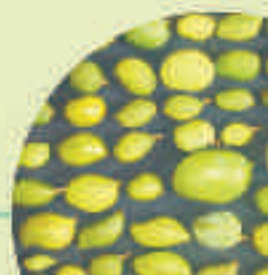


Farmer Name	Rajendra Reddy
Farm location	Kalepalle, Chittoor, Andhra Pradesh
Longitude	79.0214
Latitude	13.2319
Altitude (m)	373
IC Number	591294
Local vernacular name(s)	Kalepalle Rajendra Reddy Naati 2
Code Name	KRRN2
Meaning of local name	Indigenous seedling type having farmer's name
Relative abundance of the Variety (Average Trees/HH numbers)	One Farmer
Pictorial representation	
Distinguishing traits used by farmers to identify their variety or plant (A narration than by farmers on their variety taking into account minor differences in Colour, shape, size, width, length, height texture, habit, taste and including the following plant parts involved, Fruit, leaf, Tree Canopy, Flower, Stem/trunk, Stone)	
Colour	Orange
Shape	Round
Growth	Small
Fruit	Medium
Leaf	Long and wide
Canopy	Spherical
Flower	Dark Red
Stem/trunk	Smooth
Stone	Round (Neelum type)
Main reasons for maintaining diversity by farmers	
Quality traits [Eating quality, taste, flavour (Sweet, Acid, sour-sweet etc.), aroma, pulp texture (firm, juicy, fibrous, etc.,)]	Little sweet
Market traits [Marketability, transportability, Shelf life]	Good
Main use of plant [Home use, sale, Exchange (neighbour, friends, family)]	Sales. Table purpose
Conservation actions	Conserved at IIHR and in two diversity parks at the local site.



CHITTOOR

Farmer Name	Subramanyam Chetty
Farm location	Kalepalle, Chittoor, Andhra Pradesh
Longitude	79.0214
Latitude	13.2319
Altitude (m)	373
IC Number	591295
Local vernacular name(s)	Najoka
Code Name	KSCN
Meaning of local name	Delicate
Relative abundance of the Variety (Average Trees/HH numbers)	Available in 2 villages
Pictorial representation	
Distinguishing traits used by farmers to identify their variety or plant (A narration than by farmers on their variety taking into account minor differences in Colour, shape, size, width, length, height texture, habit, taste and including the following plant parts involved, Fruit, leaf, Tree Canopy, Flower, Stem/trunk, Stone)	
Colour	Light yellow
Shape	Oblong
Growth	Medium
Fruit	Small
Leaf	Small and lean
Canopy	Semi-circular
Flower	Light Greenish
Stem/trunk	Rough
Stone	Thin and wide & small
Main reasons for maintaining diversity by farmers	
Quality traits [Eating quality, taste, flavour (Sweet, Acid, sour-sweet etc.), aroma, pulp texture (firm, juicy, fibrous, etc.,)]	Sweet
Market traits [Marketability, transportability, Shelf life]	Very good
Main use of plant [Home use, sale, Exchange (neighbour, friends, family)]	Home use & sale. Table purpose
Conservation actions	Conserved at IIHR and in two diversity parks at the local site.



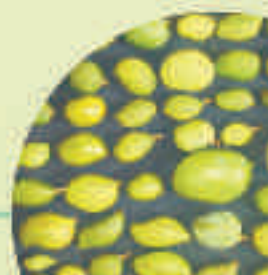
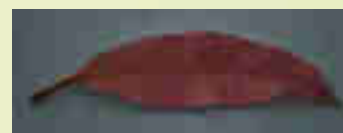


Farmer Name	P. Govinda Chetty
Farm location	Kalepalle, Chittoor, Andhra Pradesh
Longitude	79.0214
Latitude	13.2319
Altitude (m)	373
IC Number	591297
Local vernacular name(s)	Kalepalle P. Govinda Chetty Naati 1
Code Name	KGCN1
Meaning of local name	Indigenous seedling type having farmer's name
Relative abundance of the Variety (Average Trees/HH numbers)	One Farmer
Pictorial representation	
Distinguishing traits used by farmers to identify their variety or plant (A narration than by farmers on their variety taking into account minor differences in Colour, shape, size, width, length, height texture, habit, taste and including the following plant parts involved, Fruit, leaf, Tree Canopy, Flower, Stem/trunk, Stone)	
Colour	Orange
Shape	Oblong
Growth	Heavy
Fruit	Big
Leaf	Medium length and wide
Canopy	Semi-circular
Flower	Greenish Red
Stem/trunk	Smooth
Stone	Thin and long
Main reasons for maintaining diversity by farmers	
Quality traits [Eating quality, taste, flavour (Sweet, Acid, sour-sweet etc.), aroma, pulp texture (firm, juicy, fibrous, etc.,)]	Sweet
Market traits [Marketability, transportability, Shelf life]	Very good
Main use of plant [Home use, sale, Exchange (neighbour, friends, family)]	Home use & sale. Table purpose
Conservation actions	Conserved at IIHR and in two diversity parks at the local site.



CHITTOOR

Farmer Name	K. Rajasekar Reddy
Farm location	P. Reddyvaripalle, Chittoor, Andhra Pradesh
Longitude	79.0103
Latitude	13.2614
Altitude (m)	384
IC Number	591300
Local vernacular name(s)	P. Reddyvaripalle K. Rajasekar Reddy Naati 2
Code Name	RKRRN2
Meaning of local name	Indigenous seedling type having farmer's name
Relative abundance of the Variety (Average Trees/HH numbers)	One Farmer
Pictorial representation	
Distinguishing traits used by farmers to identify their variety or plant (A narration than by farmers on their variety taking into account minor differences in Colour, shape, size, width, length, height texture, habit, taste and including the following plant parts involved, Fruit, leaf, Tree Canopy, Flower, Stem/trunk, Stone)	
Colour	Light yellow
Shape	Round
Growth	Heavy
Fruit	Small
Leaf	Like Kalepadu
Canopy	Broadly pyramidal
Flower	Dark Red
Stem/trunk	Rough
Stone	Small round
Main reasons for maintaining diversity by farmers	
Quality traits [Eating quality, taste, flavour (Sweet, Acid, sour-sweet etc.), aroma, pulp texture (firm, juicy, fibrous, etc.,)]	Sweet
Market traits [Marketability, transportability, Shelf life]	Medium
Main use of plant [Home use, sale, Exchange (neighbour, friends, family)]	Home use & sale. Juicy sucking
Conservation actions	Conserved at IIHR and in two diversity parks at the local site.



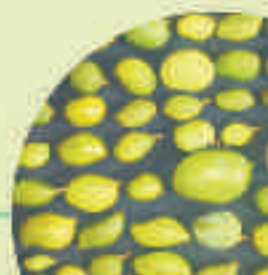
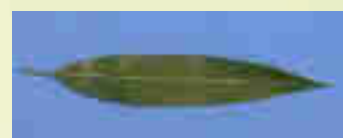


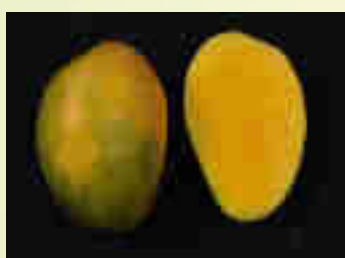
Farmer Name	Ramamoorthy Reddy
Farm location	P. Reddyvaripalli, Chittoor, Andhra Pradesh
Longitude	79.0103
Latitude	13.2614
Altitude (m)	384
IC Number	591301
Local vernacular name(s)	P. Reddyvaripalli V. Ramamoorthy Reddy Naati 1
Code Name	RVRRN 1
Meaning of local name	Indigenous seedling type having farmer's name
Relative abundance of the Variety (Average Trees/HH numbers)	One Farmer
Pictorial representation	
Distinguishing traits used by farmers to identify their variety or plant (A narration than by farmers on their variety taking into account minor differences in Colour, shape, size, width, length, height texture, habit, taste and including the following plant parts involved, Fruit, leaf, Tree Canopy, Flower, Stem/trunk, Stone)	
Colour	Light yellow and white
Shape	Oblong
Growth	Heavy
Fruit	Big
Leaf	Long
Canopy	Oblong
Flower	Light Red
Stem/trunk	Medium smooth
Stone	Thin and long
Main reasons for maintaining diversity by farmers	
Quality traits [Eating quality, taste, flavour (Sweet, Acid, sour-sweet etc.), aroma, pulp texture (firm, juicy, fibrous, etc.,)]	Sweet
Market traits [Marketability, transportability, Shelf life]	Very good
Main use of plant [Home use, sale, Exchange (neighbour, friends, family)]	Home use & sale. Table purpose
Conservation actions	Conserved at IIHR and in two diversity parks at the local site.



CHITTOOR

Farmer Name	V. Ramamurthy Reddy
Farm location	P. Reddyvaripalli, Chittoor, Andhra Pradesh
Longitude	79.0103
Latitude	13.2614
Altitude (m)	384
IC Number	591302
Local vernacular name(s)	P. Reddyvaripalli V. Ramamurthy Reddy Naati 2
Code Name	RVRRN 2
Meaning of local name	Indigenous seedling type having farmer's name
Relative abundance of the Variety (Average Trees/HH numbers)	One Farmer
Pictorial representation	
Distinguishing traits used by farmers to identify their variety or plant (A narration than by farmers on their variety taking into account minor differences in Colour, shape, size, width, length, height texture, habit, taste and including the following plant parts involved, Fruit, leaf, Tree Canopy, Flower, Stem/trunk, Stone)	
Colour	Orange
Shape	Round
Growth	Medium
Fruit	Medium
Leaf	Kalepadu type (Long)
Canopy	Oblong
Flower	Dark Red
Stem/trunk	Light smooth
Stone	Round and thin
Main reasons for maintaining diversity by farmers	
Quality traits [Eating quality, taste, flavour (Sweet, Acid, sour-sweet etc.), aroma, pulp texture (firm, juicy, fibrous, etc.,)]	Very sweet
Market traits [Marketability, transportability, Shelf life]	Good
Main use of plant [Home use, sale, Exchange (neighbour, friends, family)]	Home use & sale. Table purpose
Conservation actions	Conserved at IIHR and in two diversity parks at the local site.



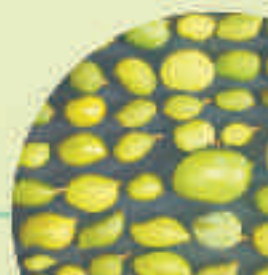


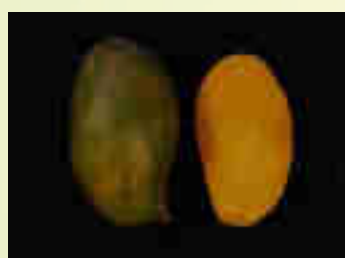
Farmer Name	K. Gurappa Chetty
Farm location	Gandlapalle, Chittoor, Andhra Pradesh
Longitude	79.0200
Latitude	13.2311
Altitude (m)	373
IC Number	591303
Local vernacular name(s)	Naati Kadhar (GGCNK)
Code Name	GGCNK
Meaning of local name	Naati Kadhar
Relative abundance of the Variety (Average Trees/HH numbers)	One Farmer
Pictorial representation	
Distinguishing traits used by farmers to identify their variety or plant (A narration than by farmers on their variety taking into account minor differences in Colour, shape, size, width, length, height texture, habit, taste and including the following plant parts involved, Fruit, leaf, Tree Canopy, Flower, Stem/trunk, Stone)	
Colour	Light yellow
Shape	Round
Growth	Heavy
Fruit	Medium
Leaf	Long and wide
Canopy	Semi-circular
Flower	Light Greenish
Stem/trunk	Rough
Stone	Neelum type
Main reasons for maintaining diversity by farmers	
Quality traits [Eating quality, taste, flavour (Sweet, Acid, sour-sweet etc.), aroma, pulp texture (firm, juicy, fibrous, etc.,)]	Sweet
Market traits [Marketability, transportability, Shelf life]	Very good
Main use of plant [Home use, sale, Exchange (neighbour, friends, family)]	Home use & sale. Table purpose
Conservation actions	Conserved at IIHR and in two diversity parks at the local site.



CHITTOOR

Farmer Name	Sreeramulu Reddy
Farm location	Gandlapalle, Chittoor, Andhra Pradesh
Longitude	79.0200
Latitude	13.2311
Altitude (m)	373
IC Number	591305
Local vernacular name(s)	Gandlapalle Sreeramulu Reddy Naati 3
Code Name	GSRRN3
Meaning of local name	Indigenous seedling type having farmer's name
Relative abundance of the Variety (Average Trees/HH numbers)	One Farmer
Pictorial representation	
Distinguishing traits used by farmers to identify their variety or plant (A narration than by farmers on their variety taking into account minor differences in Colour, shape, size, width, length, height texture, habit, taste and including the following plant parts involved, Fruit, leaf, Tree Canopy, Flower, Stem/trunk, Stone)	
Colour	Orange
Shape	Round
Growth	Medium
Fruit	Medium
Leaf	Lean and lengthy
Canopy	Semi-circular
Flower	Light Green
Stem/trunk	Smooth
Stone	Round & Lean lengthy
Main reasons for maintaining diversity by farmers	
Quality traits [Eating quality, taste, flavour (Sweet, Acid, sour-sweet etc.), aroma, pulp texture (firm, juicy, fibrous, etc.,)]	Medium sweet
Market traits [Marketability, transportability, Shelf life]	Medium
Main use of plant [Home use, sale, Exchange (neighbour, friends, family)]	Sale. Table purpose
Conservation actions	Conserved at IIHR and in two diversity parks at the local site.



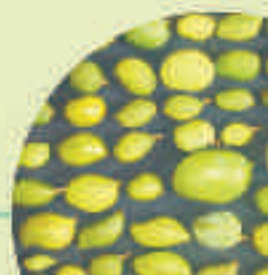
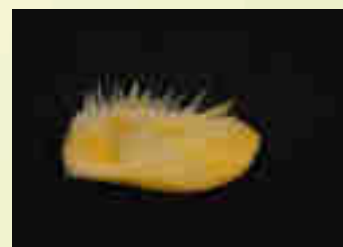


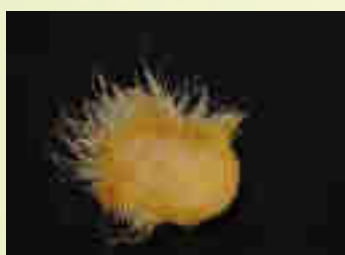
Farmer Name	Sreeramulu Reddy
Farm location	Gandlapalle, Chittoor, Andhra Pradesh
Longitude	79.0200
Latitude	13.2311
Altitude (m)	373
IC Number	591306
Local vernacular name(s)	Gandlapalle Sreeramulu Reddy Naati 4
Code Name	GSRRN4
Meaning of local name	Indigenous seedling type having farmer's name
Relative abundance of the Variety (Average Trees/HH numbers)	One Farmer
Pictorial representation	
Distinguishing traits used by farmers to identify their variety or plant (A narration than by farmers on their variety taking into account minor differences in Colour, shape, size, width, length, height texture, habit, taste and including the following plant parts involved, Fruit, leaf, Tree Canopy, Flower, Stem/trunk, Stone)	
Colour	Yellow
Shape	Oblong
Growth	Heavy
Fruit	Big
Leaf	Lean and lengthy
Canopy	Oblong
Flower	Greenish Red
Stem/trunk	Smooth
Stone	Thin and long
Main reasons for maintaining diversity by farmers	
Quality traits [Eating quality, taste, flavour (Sweet, Acid, sour-sweet etc.), aroma, pulp texture (firm, juicy, fibrous, etc.,)]	Sweet
Market traits [Marketability, transportability, Shelf life]	Very good
Main use of plant [Home use, sale, Exchange (neighbour, friends, family)]	Home use & sale. Table purpose
Conservation actions	Conserved at IIHR and in two diversity parks at the local site.



CHITTOOR

Farmer Name	Sreeramulu Reddy
Farm location	Gandlapalle, Chittoor, Andhra Pradesh
Longitude	79.0200
Latitude	13.2311
Altitude (m)	373
IC Number	5913067
Local vernacular name(s)	Gandlapalle Sreeramulu Reddy Naati 5
Code Name	GSRRN5
Meaning of local name	Indigenous seedling type having farmer's name
Relative abundance of the Variety (Average Trees/HH numbers)	One Farmer
Pictorial representation	
Distinguishing traits used by farmers to identify their variety or plant (A narration than by farmers on their variety taking into account minor differences in Colour, shape, size, width, length, height texture, habit, taste and including the following plant parts involved, Fruit, leaf, Tree Canopy, Flower, Stem/trunk, Stone)	
Colour	Light yellow
Shape	Oblong
Growth	Medium
Fruit	Small
Leaf	Lean & small
Canopy	Oblong
Flower	Green (Light)
Stem/trunk	Smooth
Stone	Lean and lengthy
Main reasons for maintaining diversity by farmers	
Quality traits [Eating quality, taste, flavour (Sweet, Acid, sour-sweet etc.), aroma, pulp texture (firm, juicy, fibrous, etc.,)]	Sweet
Market traits [Marketability, transportability, Shelf life]	Very good
Main use of plant [Home use, sale, Exchange (neighbour, friends, family)]	Home use & sale. Table purpose
Conservation actions	Conserved at IIHR and in two diversity parks at the local site.



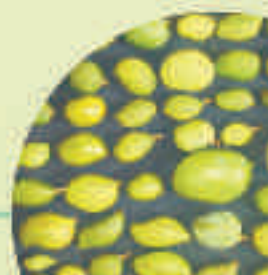
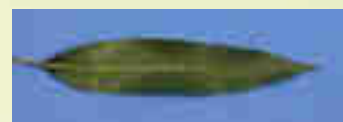


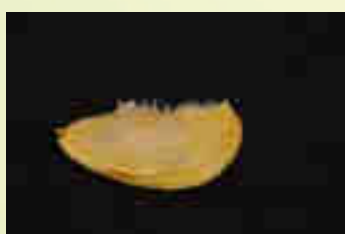
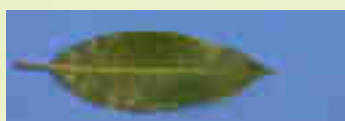
Farmer Name	Sreeramulu Reddy
Farm location	Gandlapalle, Chittoor, Andhra Pradesh
Longitude	79.0200
Latitude	13.2311
Altitude (m)	373
IC Number	5913068
Local vernacular name(s)	Gandlapalle Sreeramulu Reddy Naati 1
Code Name	GSRRN1
Meaning of local name	Indigenous seedling type having farmer's name
Relative abundance of the Variety (Average Trees/HH numbers)	One Farmer
Pictorial representation	
Distinguishing traits used by farmers to identify their variety or plant (A narration than by farmers on their variety taking into account minor differences in Colour, shape, size, width, length, height texture, habit, taste and including the following plant parts involved, Fruit, leaf, Tree Canopy, Flower, Stem/trunk, Stone)	
Colour	Orange
Shape	Round
Growth	Small
Fruit	Small
Leaf	Long and wide
Canopy	Semi-circular
Flower	Dark Red
Stem/trunk	Smooth
Stone	Lean and lengthy
Main reasons for maintaining diversity by farmers	
Quality traits [Eating quality, taste, flavour (Sweet, Acid, sour-sweet etc.), aroma, pulp texture (firm, juicy, fibrous, etc.,)]	Sweet
Market traits [Marketability, transportability, Shelf life]	Very good
Main use of plant [Home use, sale, Exchange (neighbour, friends, family)]	Home use & exchange with friends. Table purpose
Conservation actions	Conserved at IIHR and in two diversity parks at the local site.



CHITTOOR

Farmer Name	Sreeramulu Reddy
Farm location	Gandlapalle, Chittoor, Andhra Pradesh
Longitude	79.0200
Latitude	13.2311
Altitude (m)	373
IC Number	591309
Local vernacular name(s)	Gandlapalle Sreeramulu Reddy Naati 2
Code Name	GSRRN2
Meaning of local name	Indigenous seedling type having farmer's name
Relative abundance of the Variety (Average Trees/HH numbers)	One Farmer
Pictorial representation	
Distinguishing traits used by farmers to identify their variety or plant (A narration than by farmers on their variety taking into account minor differences in Colour, shape, size, width, length, height texture, habit, taste and including the following plant parts involved, Fruit, leaf, Tree Canopy, Flower, Stem/trunk, Stone)	
Colour	Orange
Shape	Oblong
Growth	Medium
Fruit	Small
Leaf	Lengthy and wide
Canopy	Semi-circular
Flower	Light Red
Stem/trunk	Light smooth
Stone	Thick and lengthy
Main reasons for maintaining diversity by farmers	
Quality traits [Eating quality, taste, flavour (Sweet, Acid, sour-sweet etc.), aroma, pulp texture (firm, juicy, fibrous, etc.,)]	Sweet
Market traits [Marketability, transportability, Shelf life]	Good
Main use of plant [Home use, sale, Exchange (neighbour, friends, family)]	Sales. Table purpose
Conservation actions	Conserved at IIHR and in two diversity parks at the local site.



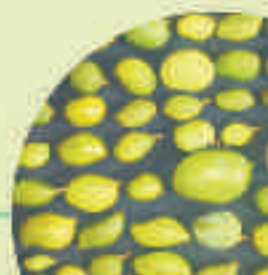
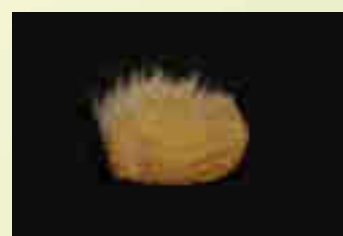


Farmer Name	K. Subramanyam Reddy
Farm location	Thumbavaripalle, Chittoor, Andhra Pradesh
Longitude	79.0144
Latitude	13.2259
Altitude (m)	377
IC Number	591310
Local vernacular name(s)	Thumbavaripalle K. Subramanyam Reddy Naati 3
Code Name	THKSRN 3
Meaning of local name	Indigenous seedling type having farmer's name
Relative abundance of the Variety (Average Trees/HH numbers)	One Farmer
Pictorial representation	
Distinguishing traits used by farmers to identify their variety or plant (A narration than by farmers on their variety taking into account minor differences in Colour, shape, size, width, length, height texture, habit, taste and including the following plant parts involved, Fruit, leaf, Tree Canopy, Flower, Stem/trunk, Stone)	
Colour	Orange
Shape	Oblong
Growth	Small
Fruit	Small
Leaf	Lean and lengthy
Canopy	Semi-circular
Flower	Crimson
Stem/trunk	Smooth
Stone	Thick and Round
Main reasons for maintaining diversity by farmers	
Quality traits [Eating quality, taste, flavour (Sweet, Acid, sour-sweet etc.), aroma, pulp texture (firm, juicy, fibrous, etc.,)]	Sweet
Market traits [Marketability, transportability, Shelf life]	Very good
Main use of plant [Home use, sale, Exchange (neighbour, friends, family)]	Home use. Table purpose
Conservation actions	Conserved at IIHR and in two diversity parks at the local site



CHITTOOR

Farmer Name	Munirathnam Reddy
Farm location	Thumbavaripalle, Chittoor, Andhra Pradesh
Longitude	79.0144
Latitude	13.2259
Altitude (m)	377
IC Number	591311
Local vernacular name(s)	Manoranjitham
Code Name	THMRM
Meaning of local name	Gives mental happiness
Relative abundance of the Variety (Average Trees/HH numbers)	Available in 2 villages
Pictorial representation	
Distinguishing traits used by farmers to identify their variety or plant (A narration than by farmers on their variety taking into account minor differences in Colour, shape, size, width, length, height texture, habit, taste and including the following plant parts involved, Fruit, leaf, Tree Canopy, Flower, Stem/trunk, Stone)	
Colour	Orange
Shape	Round
Growth	Medium
Fruit	Medium
Leaf	Lean and wide, Long
Canopy	Semi-circular
Flower	Light Green
Stem/trunk	Smooth
Stone	Thick and Round
Main reasons for maintaining diversity by farmers	
Quality traits [Eating quality, taste, flavour (Sweet, Acid, sour-sweet etc.), aroma, pulp texture (firm, juicy, fibrous, etc.,)]	Sweet
Market traits [Marketability, transportability, Shelf life]	Very good
Main use of plant [Home use, sale, Exchange (neighbour, friends, family)]	Home use. Table purpose
Conservation actions	Conserved at IIHR and in two diversity parks at the local site.



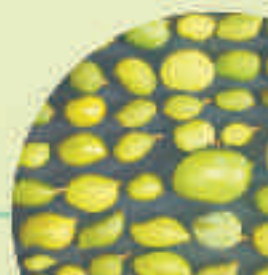


Farmer Name	Munirathnam Reddy
Farm location	Thumbavaripalle, Chittoor, Andhra Pradesh
Longitude	79.0144
Latitude	13.2259
Altitude (m)	377
IC Number	591312
Local vernacular name(s)	Punasa
Code Name	THMRP
Meaning of local name	Bears in off season
Relative abundance of the Variety (Average Trees/HH numbers)	Available in 2 communities
Pictorial representation	
Distinguishing traits used by farmers to identify their variety or plant (A narration than by farmers on their variety taking into account minor differences in Colour, shape, size, width, length, height texture, habit, taste and including the following plant parts involved, Fruit, leaf, Tree Canopy, Flower, Stem/trunk, Stone)	
Colour	Yellow
Shape	Round
Growth	Small
Fruit	Small
Leaf	Lean and small
Canopy	Semi-circular
Flower	Dark Red
Stem/trunk	Smooth
Stone	Round
Main reasons for maintaining diversity by farmers	
Quality traits [Eating quality, taste, flavour (Sweet, Acid, sour-sweet etc.), aroma, pulp texture (firm, juicy, fibrous, etc.,)]	Sour - Sweet
Market traits [Marketability, transportability, Shelf life]	Very good
Main use of plant [Home use, sale, Exchange (neighbour, friends, family)]	Home use. Table purpose
Conservation actions	Conserved at IIHR and in two diversity parks at the local site.



CHITTOOR

Farmer Name	K. Subramanyam Reddy
Farm location	Thumbavaripalle, Chittoor, Andhra Pradesh
Longitude	79.0144
Latitude	13.2259
Altitude (m)	377
IC Number	591313
Local vernacular name(s)	Thumbavaripalle K. Subramanyam Reddy Naati 1
Code Name	THKSRN1
Meaning of local name	Indigenous seedling type having farmer's name
Relative abundance of the Variety (Average Trees/HH numbers)	One Farmer
Pictorial representation	
Distinguishing traits used by farmers to identify their variety or plant (A narration than by farmers on their variety taking into account minor differences in Colour, shape, size, width, length, height texture, habit, taste and including the following plant parts involved, Fruit, leaf, Tree Canopy, Flower, Stem/trunk, Stone)	
Colour	White
Shape	Round
Growth	Heavy
Fruit	Big
Leaf	Lean & lengthy
Canopy	Broadly pyramidal
Flower	Light Green/Crimson
Stem/trunk	Rough
Stone	Thin & long
Main reasons for maintaining diversity by farmers	
Quality traits [Eating quality, taste, flavour (Sweet, Acid, sour-sweet etc.), aroma, pulp texture (firm, juicy, fibrous, etc.,)]	Sweet
Market traits [Marketability, transportability, Shelf life]	Very good
Main use of plant [Home use, sale, Exchange (neighbour, friends, family)]	Home use. Table purpose
Conservation actions	Conserved at IIHR and in two diversity parks at the local site.



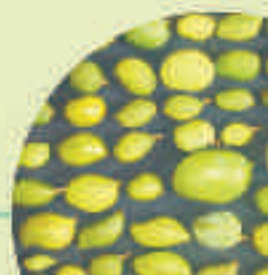
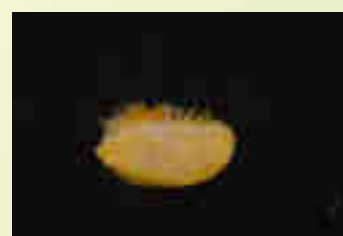


Farmer Name	K. Subramanyam Reddy
Farm location	Thumbavaripalle, Chittoor, Andhra Pradesh
Longitude	79.0144
Latitude	13.2259
Altitude (m)	377
IC Number	591314
Local vernacular name(s)	Thumbavaripalle K. Subramanyam Reddy Naati 2
Code Name	THKSRN2
Meaning of local name	Indigenous seedling type having farmer's name
Relative abundance of the Variety (Average Trees/HH numbers)	One Farmer
Pictorial representation	
Distinguishing traits used by farmers to identify their variety or plant (A narration than by farmers on their variety taking into account minor differences in Colour, shape, size, width, length, height texture, habit, taste and including the following plant parts involved, Fruit, leaf, Tree Canopy, Flower, Stem/trunk, Stone)	
Colour	Light yellow
Shape	Round
Growth	Medium
Fruit	Small
Leaf	Wide and length
Canopy	Oblong
Flower	Dark Red
Stem/trunk	Smooth
Stone	Lean, lengthy & thin
Main reasons for maintaining diversity by farmers	
Quality traits [Eating quality, taste, flavour (Sweet, Acid, sour-sweet etc.), aroma, pulp texture (firm, juicy, fibrous, etc.,)]	Sweet
Market traits [Marketability, transportability, Shelf life]	Very good
Main use of plant [Home use, sale, Exchange (neighbour, friends, family)]	Home use & exchange with friends. Table purpose
Conservation actions	Conserved at IIHR and in two diversity parks at the local site.



CHITTOOR

Farmer Name	K. Subramanyam Reddy
Farm location	Thumbavaripalle, Chittoor, Andhra Pradesh
Longitude	79.0144
Latitude	13.2259
Altitude (m)	377
IC Number	591315
Local vernacular name(s)	Thumbavaripalle K. Subramanyam Reddy Naati 4
Code Name	THKSRN4
Meaning of local name	Indigenous seedling type having farmer's name
Relative abundance of the Variety (Average Trees/HH numbers)	One Farmer
Pictorial representation	
Distinguishing traits used by farmers to identify their variety or plant (A narration than by farmers on their variety taking into account minor differences in Colour, shape, size, width, length, height texture, habit, taste and including the following plant parts involved, Fruit, leaf, Tree Canopy, Flower, Stem/trunk, Stone)	
Colour	Orange
Shape	Round
Growth	Small
Fruit	Small
Leaf	Lean and lengthy
Canopy	Semi-circular
Flower	Crimson
Stem/trunk	Smooth
Stone	Long and thin
Main reasons for maintaining diversity by farmers	
Quality traits [Eating quality, taste, flavour (Sweet, Acid, sour-sweet etc.), aroma, pulp texture (firm, juicy, fibrous, etc.,)]	Sweet
Market traits [Marketability, transportability, Shelf life]	Good
Main use of plant [Home use, sale, Exchange (neighbour, friends, family)]	Sale. Table purpose
Conservation actions	Conserved at IIHR and in two diversity parks at the local site.



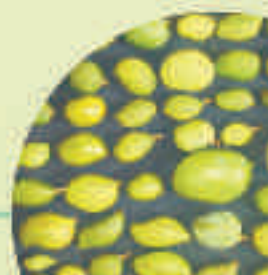


Farmer Name	K. Ravindranath
Farm location	Palamakulapalle, Chittoor, Andhra Pradesh
Longitude	78.5237
Latitude	13.1124
Altitude (m)	460
IC Number	591316
Local vernacular name(s)	Palamakulapalle K. Ravindranath Naati 1
Code Name	PKRN1
Meaning of local name	Indigenous seedling type having farmer's name
Relative abundance of the Variety (Average Trees/HH numbers)	One Farmer
Pictorial representation	
Distinguishing traits used by farmers to identify their variety or plant (A narration than by farmers on their variety taking into account minor differences in Colour, shape, size, width, length, height texture, habit, taste and including the following plant parts involved, Fruit, leaf, Tree Canopy, Flower, Stem/trunk, Stone)	
Colour	Yellow
Shape	Round
Growth	Heavy
Fruit	Big
Leaf	Lean and lengthy
Canopy	Oblong
Flower	Light Green
Stem/trunk	Smooth
Stone	Small round (Rumani Type)
Main reasons for maintaining diversity by farmers	
Quality traits [Eating quality, taste, flavour (Sweet, Acid, sour-sweet etc.), aroma, pulp texture (firm, juicy, fibrous, etc.,)]	Sweet
Market traits [Marketability, transportability, Shelf life]	Very good
Main use of plant [Home use, sale, Exchange (neighbour, friends, family)]	Home use & Sale. Table purpose
Conservation actions	Conserved at IIHR and in two diversity parks at the local site.



CHITTOOR

Farmer Name	K. Ravindranath
Farm location	Palamakulapalle, Chittoor, Andhra Pradesh
Longitude	78.5237
Latitude	13.1124
Altitude (m)	460
IC Number	591317
Local vernacular name(s)	Palamakulapalle K. Ravindranath Naati 2
Code Name	PKRN2
Meaning of local name	Indigenous seedling type having farmer's name
Relative abundance of the Variety (Average Trees/HH numbers)	One Farmer
Pictorial representation	
Distinguishing traits used by farmers to identify their variety or plant (A narration than by farmers on their variety taking into account minor differences in Colour, shape, size, width, length, height texture, habit, taste and including the following plant parts involved, Fruit, leaf, Tree Canopy, Flower, Stem/trunk, Stone)	
Colour	Yellow
Shape	Oblong
Growth	Heavy
Fruit	Big
Leaf	Lean and lengthy
Canopy	Broadly pyramidal
Flower	Light Red
Stem/trunk	Smooth
Stone	Thick and long
Main reasons for maintaining diversity by farmers	
Quality traits [Eating quality, taste, flavour (Sweet, Acid, sour-sweet etc.), aroma, pulp texture (firm, juicy, fibrous, etc.,)]	Medium sweet
Market traits [Marketability, transportability, Shelf life]	Very good
Main use of plant [Home use, sale, Exchange (neighbour, friends, family)]	Sale. Table purpose
Conservation actions	Conserved at IIHR and in two diversity parks at the local site.



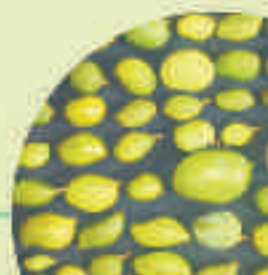


Farmer Name	K. Ravindranath
Farm location	Palamakulapalle, Chittoor, Andhra Pradesh
Longitude	78.5237
Latitude	13.1124
Altitude (m)	460
IC Number	591318
Local vernacular name(s)	Palamakulapalle K. Ravindranath Naati 3
Code Name	PKRN3
Meaning of local name	Indigenous seedling type having farmer's name
Relative abundance of the Variety (Average Trees/HH numbers)	One Farmer
Pictorial representation	
Distinguishing traits used by farmers to identify their variety or plant (A narration than by farmers on their variety taking into account minor differences in Colour, shape, size, width, length, height texture, habit, taste and including the following plant parts involved, Fruit, leaf, Tree Canopy, Flower, Stem/trunk, Stone)	
Colour	White
Shape	Round
Growth	Heavy
Fruit	Medium
Leaf	Lean and lengthy
Flower	Light Green
Canopy	Spherical
Stem/trunk	Rough
Stone	Small round (Athimaduram Type)
Main reasons for maintaining diversity by farmers	
Quality traits [Eating quality, taste, flavour (Sweet, Acid, sour-sweet etc.), aroma, pulp texture (firm, juicy, fibrous, etc.,)]	Very sweet
Market traits [Marketability, transportability, Shelf life]	Good
Main use of plant [Home use, sale, Exchange (neighbour, friends, family)]	Home use & Sale. Table purpose
Conservation actions	Conserved at IIHR and in two diversity parks at the local site.



CHITTOOR

Farmer Name	K. Ravindranath
Farm location	Palamakulapalle, Chittoor, Andhra Pradesh
Longitude	78.5237
Latitude	13.1124
Altitude (m)	460
IC Number	591320
Local vernacular name(s)	Green Baneshan
Code Name	PKRGB
Meaning of local name	Quality is like Baneshan but colour is green
Relative abundance of the Variety (Average Trees/HH numbers)	One Farmer
Pictorial representation	
Distinguishing traits used by farmers to identify their variety or plant (A narration than by farmers on their variety taking into account minor differences in Colour, shape, size, width, length, height texture, habit, taste and including the following plant parts involved, Fruit, leaf, Tree Canopy, Flower, Stem/trunk, Stone)	
Colour	Light yellow
Shape	Round
Growth	Heavy
Fruit	Big
Leaf	Long and wide
Flower	Light Green
Canopy	Semi-circular
Stem/trunk	Rough and smooth
Stone	Thin and lengthy
Main reasons for maintaining diversity by farmers	
Quality traits [Eating quality, taste, flavour (Sweet, Acid, sour-sweet etc.), aroma, pulp texture (firm, juicy, fibrous, etc.,)]	Sweet
Market traits [Marketability, transportability, Shelf life]	Very good
Main use of plant [Home use, sale, Exchange (neighbour, friends, family)]	Home use & Sale. Table purpose
Conservation actions	Conserved at IIHR and in two diversity parks at the local site.



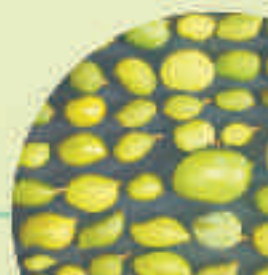


Farmer Name	V. Ranga Reddy
Farm location	Baitpalle, Chittoor, Andhra Pradesh
Longitude	79.0259
Latitude	13.2252
Altitude (m)	368
IC Number	591321
Local vernacular name(s)	Baitpalle V. Ranga Reddy Naati 1
Code Name	BVRRN1
Meaning of local name	Indigenous seedling type having farmer's name
Relative abundance of the Variety (Average Trees/HH numbers)	One Farmer
Pictorial representation	
Distinguishing traits used by farmers to identify their variety or plant (A narration than by farmers on their variety taking into account minor differences in Colour, shape, size, width, length, height texture, habit, taste and including the following plant parts involved, Fruit, leaf, Tree Canopy, Flower, Stem/trunk, Stone)	
Colour	Orange
Shape	Round
Growth	Heavy
Fruit	Big
Leaf	Lean and lengthy
Canopy	Spherical
Flower	Crimson
Stem/trunk	Smooth
Stone	Medium & thick
Main reasons for maintaining diversity by farmers	
Quality traits [Eating quality, taste, flavour (Sweet, Acid, sour-sweet etc.), aroma, pulp texture (firm, juicy, fibrous, etc.,)]	Very sweet
Market traits [Marketability, transportability, Shelf life]	Good
Main use of plant [Home use, sale, Exchange (neighbour, friends, family)]	Sales. Table purpose
Conservation actions	Conserved at IIHR and in two diversity parks at the local site.



CHITTOOR

Farmer Name	V. Ranga Reddy
Farm location	Baitpalle, Chittoor, Andhra Pradesh
Longitude	79.0259
Latitude	13.2252
Altitude (m)	368
IC Number	591322
Local vernacular name(s)	Baitpalle V. Ranga Reddy Naati 2
Code Name	BVRRN2
Meaning of local name	Indigenous seedling type having farmer's name
Relative abundance of the Variety (Average Trees/HH numbers) Pictorial representation	One Farmer
Distinguishing traits used by farmers to identify their variety or plant (A narration than by farmers on their variety taking into account minor differences in Colour, shape, size, width, length, height texture, habit, taste and including the following plant parts involved, Fruit, leaf, Tree Canopy, Flower, Stem/trunk, Stone)	
Colour	Orange
Shape	Round
Growth	Heavy
Fruit	Big
Leaf	Lean, lengthy and wide
Canopy	Semi-circular
Flower	Light Green
Stem/trunk	Smooth
Stone	Small and round
Main reasons for maintaining diversity by farmers	
Quality traits [Eating quality, taste, flavour (Sweet, Acid, sour- sweet etc.), aroma, pulp texture (firm, juicy, fibrous, etc.,)]	Sweet
Market traits [Marketability, transportability, Shelf life]	Very good
Main use of plant [Home use, sale, Exchange (neighbour, friends, family)]	Sales. Table purpose
Conservation actions	Conserved at IIHR and in two diversity parks at the local site.



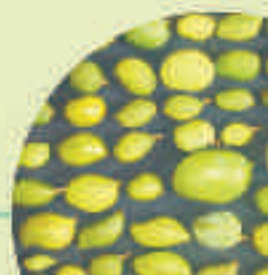
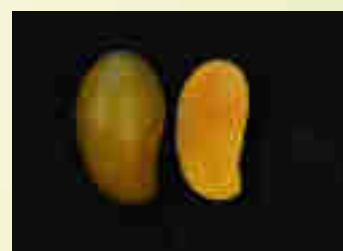


Farmer Name	V. Ranga Reddy
Farm location	Baitpalle, Chittoor, Andhra Pradesh
Longitude	79.0259
Latitude	13.2252
Altitude (m)	368
IC Number	591323
Local vernacular name(s)	Gadiyaram
Code Name	BVRRG
Meaning of local name	Watch
Relative abundance of the Variety (Average Trees/HH numbers)	Available in 3 communities
Pictorial representation	
Distinguishing traits used by farmers to identify their variety or plant (A narration than by farmers on their variety taking into account minor differences in Colour, shape, size, width, length, height texture, habit, taste and including the following plant parts involved, Fruit, leaf, Tree Canopy, Flower, Stem/trunk, Stone)	
Colour	Orange
Shape	Round
Growth	Heavy
Fruit	Big
Leaf	Lengthy and wide
Canopy	Broadly pyramidal
Flower	Crimson
Stem/trunk	Smooth
Stone	Long
Main reasons for maintaining diversity by farmers	
Quality traits [Eating quality, taste, flavour (Sweet, Acid, sour-sweet etc.), aroma, pulp texture (firm, juicy, fibrous, etc.,)]	Sweet
Market traits [Marketability, transportability, Shelf life]	Very good
Main use of plant [Home use, sale, Exchange (neighbour, friends, family)]	Home use & sale. Table purpose
Conservation actions	Conserved at IIHR and in two diversity parks at the local site.



CHITTOOR

Farmer Name	K. Surendra Reddy
Farm location	Gudipalle, Chittoor, Andhra Pradesh
Longitude	79.0207
Latitude	13.2559
Altitude (m)	376
IC Number	591324
Local vernacular name(s)	Gudipalle K. Surendra Reddy Naati 1
Code Name	GKSRN1
Meaning of local name	Indigenous seedling type having farmer's name
Relative abundance of the Variety (Average Trees/HH numbers) Pictorial representation	Available in 3 Villages
Distinguishing traits used by farmers to identify their variety or plant (A narration than by farmers on their variety taking into account minor differences in Colour, shape, size, width, length, height texture, habit, taste and including the following plant parts involved, Fruit, leaf, Tree Canopy, Flower, Stem/trunk, Stone)	
Colour	Orange
Shape	Oblong
Growth	Heavy
Fruit	Small
Leaf	Lengthy and wide
Canopy	Semi-circular
Flower	Light Green
Stem/trunk	Smooth
Stone	Thin and long
Main reasons for maintaining diversity by farmers	
Quality traits [Eating quality, taste, flavour (Sweet, Acid, sour- sweet etc.), aroma, pulp texture (firm, juicy, fibrous, etc.,)]	Sweet
Market traits [Marketability, transportability, Shelf life]	Good
Main use of plant [Home use, sale, Exchange (neighbour, friends, family)]	Home use & sale. Table purpose
Conservation actions	Conserved at IIHR and in two diversity parks at the local site.





Farmer Name	K. Surendra Reddy
Farm location	Gudipalle, Chittoor, Andhra Pradesh
Longitude	79.0207
Latitude	13.2559
Altitude (m)	376
IC Number	591325
Local vernacular name(s)	Gudipalle K. Surendra Reddy Naati 2
Code Name	GKSRN2
Meaning of local name	Indigenous seedling type having farmer's name
Relative abundance of the Variety (Average Trees/HH numbers)	One Farmer
Pictorial representation	
Distinguishing traits used by farmers to identify their variety or plant (A narration than by farmers on their variety taking into account minor differences in Colour, shape, size, width, length, height texture, habit, taste and including the following plant parts involved, Fruit, leaf, Tree Canopy, Flower, Stem/trunk, Stone)	
Colour	Orange
Shape	Round
Growth	Medium
Fruit	Big
Leaf	Lean and long
Canopy	Semi-circular
Flower	Light Red
Stem/trunk	Rough
Stone	Neelum stone type
Main reasons for maintaining diversity by farmers	
Quality traits [Eating quality, taste, flavour (Sweet, Acid, sour-sweet etc.), aroma, pulp texture (firm, juicy, fibrous, etc.,)]	Sweet
Market traits [Marketability, transportability, Shelf life]	Very good
Main use of plant [Home use, sale, Exchange (neighbour, friends, family)]	Home use & sale. Table purpose
Conservation actions	Conserved at IIHR and in two diversity parks at the local site.



MALIHABAD

AAMIN	
Farmers Name	Shri Md. Sadab
Country/Site/community	India/ Malihabad / Kasmandi Kalan
Latitude, Longitude	N 26°56'22.7", E 80°46'5.9"
Name of landrace/ farmers variety	Aamin / Farmers variety or seedling
Local vernacular name(s)	Aamin
Local name meaning(s)	Elliptical mango
Number of plants	One
Relative abundance of the variety	Low
Distinguishing traits used by farmers	
Fruit Size	Medium long, fruit weight 150-200g, yellow
Leaf	Small narrow, apex pointed
Flower	Panicle small
Stone	Long
Main reasons for growing the landrace or seedling: For home use and fruit exchange	
Quality traits	Very attractive fruit colour, high pulp content
Market traits	Medium size fruit with good pulp colour, late ripening
Main use of plant	As table variety
Horticultural traits	Very sweet, table purpose variety
Comments	Regular bearer, market value high
Conservation action	Mother plant conserved <i>in situ</i> , plant multiplied and conserved in National Active Germplasm Site (CISH) and orchards in Malihabad Communities





ALLAHABADI CHAUSA	
Farmers Name	Shri Kanhaiya Lal
Country/Site/community:	India/ Malihabad/ Sarsanda
Latitude, Longitude	N 26°57'45.4", E 80°47'41.5"
Name of landrace/ farmers variety or seedling	Allahabadi Chausa / Farmers variety
Local vernacular name(s)	Allahabadi Chausa
Local name meaning(s)	Chausa from Allahabad
Number of plants	One
Relative abundance of the variety	Low
Distinguishing traits used by farmers	
Fruit Size	Long and thick, fruit weight 300-500g, yellow
Leaf	Long with medium breadth, apex pointed
Flower	panicle large and light red
Stone	Long and narrow
Main reasons for growing the landrace or seedling	For home use and fruit exchange
Quality traits	Attractive fruit, good pulp content
Market traits	Medium size fruit, sweet and good pulp colour, late variety
Main use of plant	As table variety
Horticultural traits	Sweet, table purpose
Comments	Regular and late bearer
Conservation action	Mother plant conserved <i>in situ</i> , plant multiplied and conserved in National Active Germplasm Site (CISH) and orchards in Malihabad Communities



MALIHABAD

BHADAILA	
Farmers Name	Shri Sayeed Ahmad
Country/Site/community	India/ Malihabad / Kasmandi Kalan
Latitude, Longitude	N 26°55'47.5", E 80°45'52.9"
Name of landrace/ farmers variety or seedling	Bhadaila / Farmers variety
Local vernacular name(s)	Bhadaila
Local name meaning(s)	Ripening in Bhado Month (August-September)
Number of plants	One
Relative abundance of the variety	Low
Distinguishing traits used by farmers	
Fruit Size	Round, fruit weight 400-500g, yellow
Leaf	Long, widen and apex pointed
Flower	Panicle Large and yellow
Stone	Small
Main reasons for growing the landrace or seedling	For home use and fruit exchange
Quality traits	Fruit taste excellent
Market traits	Late variety
Main use of plant	As table variety
Horticultural traits	Sucking type, very sweet
Comments	Late maturity
Conservation action	Mother plant conserved <i>in situ</i> , plant multiplied and conserved in National Active Germplasm Site (CISH) and orchards in Malihabad Communities





BHAGWANTA	
Farmers Name:	Shri Suresh Kumar
Country/Site/community	India/ Malihabad /Gopramau
Latitude, Longitude	N 26°58'26.5", E 80°48'49.2"
Name of landrace/ farmers variety or seedling	Bhagwanta / Farmers variety
Local vernacular name(s)	Bhagwanta
Local name meaning(s)	Name of person
Number of plants	One
Relative abundance of the variety	Low
Distinguishing traits used by farmers	
Fruit Size	Round and flat, light yellow
Leaf	Long, apex pointed
Flower	Light pink
Stone	Medium
Main reasons for growing the landrace or seedling	For home use and exchange
Quality traits	High pulp content
Market traits	Late variety
Main use of plant	As table & pickles variety
Horticultural traits	Regular bearing, sucking type, fibrous, sweet, yield medium
Comments	Market value good
Conservation action	Mother plant conserved <i>in situ</i> , plant multiplied and conserved in National Active Germplasm Site (CISH) and orchards in Malihabad Communities

MALIHABAD

DASHEHARI IMPROVED	
Farmers Name	Shri Nawab Hasan
Country/Site/community	India/ Malihabad / Kasmandi Kalan
Latitude, Longitude	N 26°55'38.8", E 80°46'23.4"
Name of landrace/ farmers variety or seedling	Dashehari improved / Farmers variety
Local vernacular name(s)	Dashehari improved
Local name meaning(s)	Improved Dashehari
Number of plants	One
Relative abundance of the variety	Low
Distinguishing traits used by farmers	
Fruit Size	Fruit Size Large and long, fruit weight 500-600 g, yellow, dense and raised grain like spots
Leaf	Narrow with pointed apex
Flower	Panicle Long, greenish yellow
Stone	Long
Main reasons for growing the landrace or seedling	For home use and fruit exchange
Quality traits	Very attractive fruit, high pulp content similar to Dashehari
Market traits	Fruit with good pulp colour and size
Main use of plant	As table variety
Horticultural traits	Fibreless, pulp content high, sweet
Comments	Similar to Dashehari, large size fruit
Conservation action	Mother plant conserved <i>in situ</i> , plant multiplied and conserved in National Active Germplasm Site (CISH) and orchards in Malihabad Communities





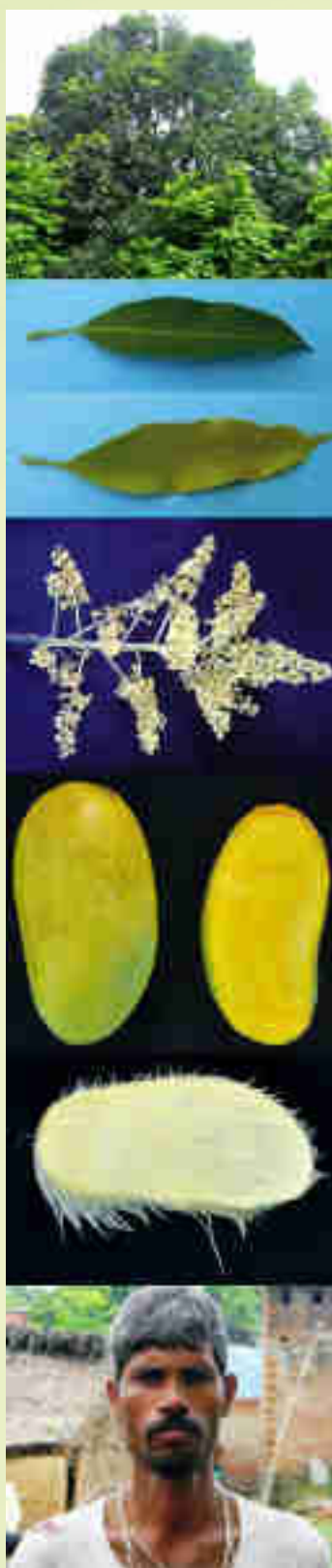
DESHI	
Farmers Name	Shri Suresh Kumar
Country/Site/community	India/ Malihabad /Gopramau
Latitude, Longitude	N 26°58'26.1", E 80°48'48.9"
Name of landrace/ farmers variety or seedling:	Deshi / Farmers variety
Local vernacular name(s)	Deshi
Local name meaning(s)	Seedling
Number of plants	One
Relative abundance of the variety	Low
Distinguishing traits used by farmers	
Fruit Size	Large long, fruit weight 300-400g, yellow
Leaf	Dark green, long, apex pointed
Flower	Light yellow
Stone	Long, Narrow
Main reasons for growing the landrace or seedling	For home use and exchange
Quality traits	Attractive fruit, good pulp content
Market traits	Medium size fruit, sweet and good pulp colour, mid-late variety
Main use of plant	As table variety
Horticultural traits	Sucking type, fibrous, yield poor, sweet
Comments	Market value good
Conservation action	Mother plant conserved <i>in situ</i> , plant multiplied and conserved in National Active Germplasm Site (CISH) and orchards in Malihabad Communities



MALIHABAD

DESHI CHAUSA	
Farmers Name	Shri Karunesh Singh
Country/Site/community	India/ Malihabad /Gopramau
Latitude, Longitude	N 26°58'21.4", E 80°49'22.7"
Name of landrace/ farmers variety or seedling	Deshi Chausa / Farmers variety
Local vernacular name(s)	Deshi Chausa
Local name meaning(s)	Seedling of Chausa
Number of plants	One
Relative abundance of the variety	Low
Distinguishing traits used by farmers	
Fruit Size	Long, thick, yellow
Leaf	Dark green, long, apex pointed
Flower	Panicle medium, yellow
Stone	Long
Main reasons for growing the landrace or seedling	For home use and fruit exchange
Quality traits	Very attractive fruit with good taste
Market traits	Attractive fruit, late maturing with market potential
Main use of plant	As table variety
Horticultural traits	Table purpose, fibreless, yield medium, sweet
Comments	Late maturity
Conservation action	Mother plant conserved <i>in situ</i> , plant multiplied and conserved in National Active Germplasm Site (CISH) and orchards in Malihabad Communities

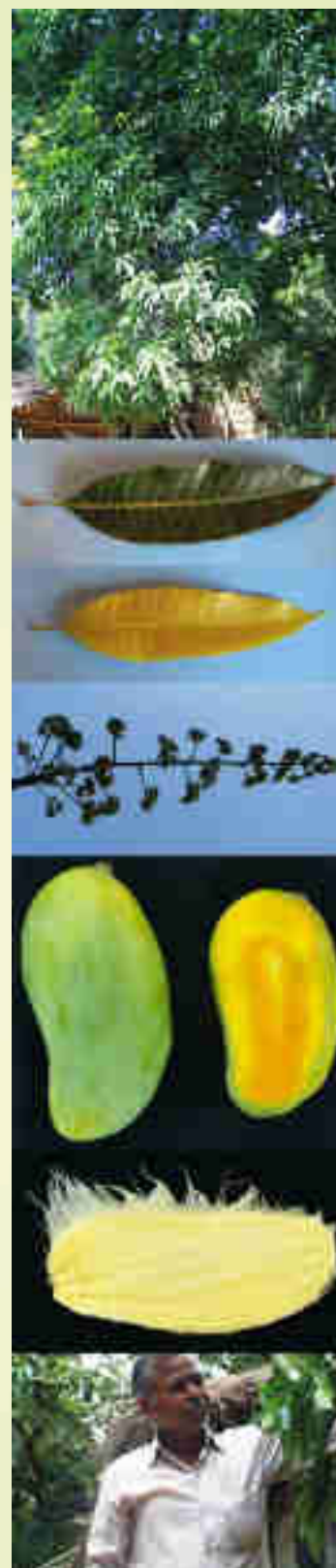




DESHI CHAUSA	
Farmers Name	Shri Deena
Country/Site/community	India/ Malihabad /Gopramau
Latitude, Longitude	N 26°58'14.9", E 80°49'31.3"
Name of landrace/ farmers variety or seedling:	Deshi Chausa / Farmers variety
Local vernacular name(s)	Deshi Chausa
Local name meaning(s)	Seedling of Chausa
Number of plants	One
Relative abundance of the variety	Low
Distinguishing traits used by farmers	
Fruit Size	Upper wide lower narrow, Fruit weight 250-300 g, light yellow
Leaf	Dark green , Large and apex pointed
Flower	Panicle medium, Light yellow
Stone	Long
Main reasons for growing the landrace or seedling	For home use and fruit exchange
Quality traits	Very attractive fruit with good taste and similar to Chausa
Market traits	Attractive fruit, late maturing with market potential
Main use of plant	As table variety
Horticultural traits	Table as well as sucking type, sweet, fibrous, yield medium.
Comments	Market value good
Conservation action	Mother plant conserved <i>in situ</i> , plant multiplied and conserved in National Active Germplasm Site (CISH) and orchards in Malihabad Communities

MALIHABAD

DESHI CHAUSA	
Farmers Name	Shri Kanhaiya Lal
Country/Site/community	India/ Malihabad /Sarsanda
Latitude, Longitude	N 26058'10.5", E 80047'51.6"
Name of landrace/ farmers variety or seedling	Deshi Chausa / Farmers variety
Local vernacular name(s)	Deshi Chausa
Local name meaning(s)	Seedling of Chausa
Number of plants	One
Relative abundance of the variety	Low
Distinguishing traits used by farmers	
Fruit Size	Long and thick, yellow, fruit weight 200-250 g.
Leaf	Long with medium breadth
Flower	Panicle medium, light yellow
Stone	Long, fibrous
Main reasons for growing the landrace or seedling	For home use and fruit exchange
Quality traits	Very attractive fruit with good taste
Market traits	Attractive fruit with market potential
Main use of plant	As table variety
Horticultural traits	Table purpose, very sweet
Comments	Market value good
Conservation action	Mother plant conserved <i>in situ</i> , plant multiplied and conserved in National Active Germplasm Site (CISH) and orchards in Malihabad Communities



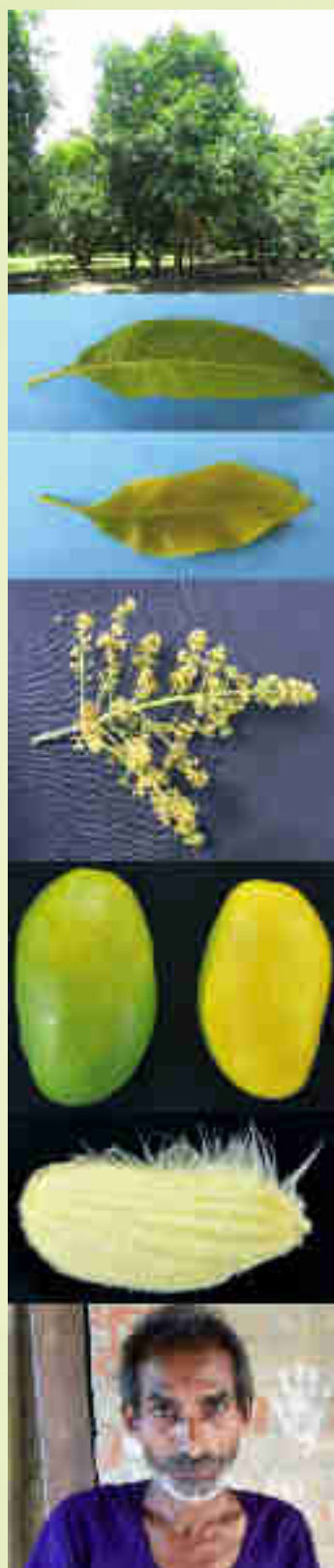


DESHI GOLA	
Farmers Name	Shri Putti Lal
Country/Site/community	India/ Malihabad/ Mohd. Nagar Talukedari
Latitude, Longitude	N 26°56'25.8", E 80°45'32.9"
Name of landrace/ farmers variety or seedling	Deshi Gola / Farmers variety
Local vernacular name(s)	Deshi Gola
Local name meaning(s)	Round seedling
Number of plants	One
Relative abundance of the variety	Low
Distinguishing traits used by farmers	
Fruit Size	Small, round, light green with raised grain like spots, fruit weight 150-200 g
Leaf	Dark green, medium long and apex pointed
Flower	Small, light yellow
Stone	Small
Main reasons for growing the landrace or seedling	For home use and fruit exchange
Quality traits	Medium fruit with good taste and also suitable for pickle
Market traits	Market as pickle variety
Main use of plant	As table & pickles variety (For home use and exchange)
Horticultural traits	Good for pickle, sweet, fibrous
Comments	Market value good
Conservation action	Mother plant conserved <i>in situ</i> , plant multiplied and conserved in National Active Germplasm Site (CISH) and orchards in Malihabad Communities

MALIHABAD

DESHI LAMBOI	
Farmers Name	Shri Chhote Lal
Country/Site/community	India/Malihabad/ Gopramau
Latitude, Longitude	N 26°58'24.5", E 80°48'42.3"
Name of landrace/ farmers variety or seedling	Deshi Lamboi / Farmers variety
Local vernacular name(s)	Deshi Lamboi
Local name meaning(s)	Elongated Seedling fruit
Number of plants	One
Relative abundance of the variety	Low
Distinguishing traits used by farmers	
Fruit Size	Long, yellow, fruit weight 300-350 g
Leaf	Dark green, large, apex pointed
Flower	Panicle medium, pink
Stone	Long, fibrous
Main reasons for growing the landrace or seedling	For home use and fruit exchange
Quality traits	Attractive fruit, good pulp content
Market traits	Medium size fruit, sweet, mid season variety
Main use of plant	As table variety
Horticultural traits	Fibrous, yield medium, sweet
Comments	Market value good
Conservation action	Mother plant conserved <i>in situ</i> , plant multiplied and conserved in National Active Germplasm Site (CISH) and orchards in Malihabad Communities



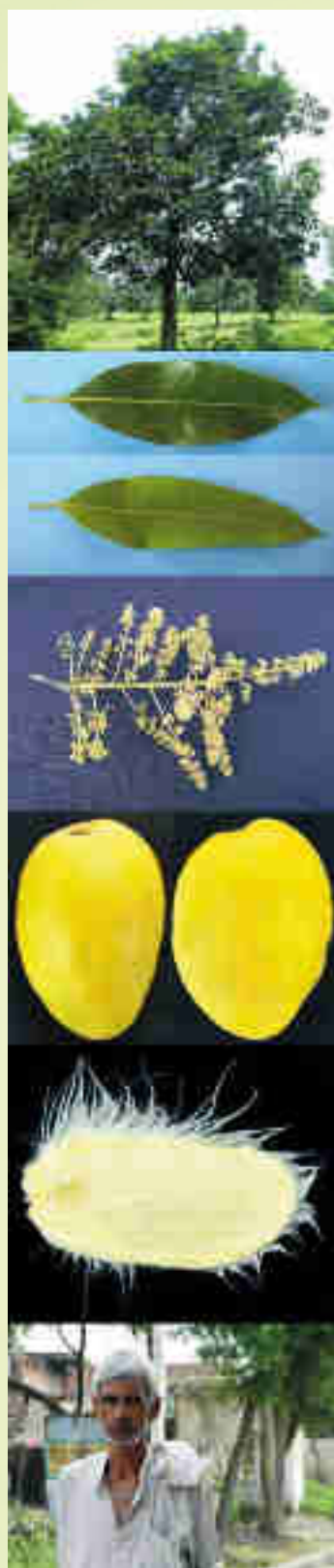


DESHI LAMBOI	
Farmers Name	Shri Jaggannath
Country/Site/community	India/ Malihabad /Gopramau
Latitude, Longitude	N 26°58'11", E 80°49'22.3"
Name of landrace/ farmers variety or seedling	Deshi Lamboi / Farmers variety
Local vernacular name(s)	Deshi Lamboi
Local name meaning(s)	Elongated Seedling fruit
Number of plants	One
Relative abundance of the variety	Low
Distinguishing traits used by farmers	
Fruit Size	Oval, Fruit weight 150-200 g, light yellow
Leaf	Dark green, large and apex pointed
Flower	Medium and pink
Stone	Long
Main reasons for growing the	For home use and exchange landrace or seedling
Quality traits	Very attractive fruit with good taste
Market traits	Attractive fruit, late maturing with market potential
Main use of plant	As table variety (For home use and exchange)
Horticultural traits	Sucking type, sweet, fibrous, yield medium
Comments	Market value good
Conservation action	Mother plant conserved <i>in situ</i> , plant multiplied and conserved in National Active Germplasm Site (CISH) and orchards in Malihabad Communities

MALIHABAD

DESHI SAFEDA	
Farmers Name	Shri Ishwardeen
Country/Site/community	India/ Malihabad / Sarsanda
Latitude, Longitude	N 26°58'2.8", E 80°48'0.1"
Name of landrace/ farmers variety or seedling	Deshi Safeda / Farmers variety
Local vernacular name(s)	Deshi Safeda
Local name meaning(s)	Seedling of Lucknow Safeda
Number of plants	One
Relative abundance of the variety	Low
Distinguishing traits used by farmers	
Fruit Size	Long and upper portion wide, yellow, fruit weight 200-250 g
Leaf	Long with medium width
Flower	Medium yellow
Stone	Long, fibrous
Main reasons for growing the landrace or seedling	For home use and exchange
Quality traits	Attractive fruit, shape similar to Lucknow Safeda
Market traits	Medium size fruit, sweet, mid season variety, sucking
Main use of plant	As table and pickles variety (For home use and exchange)
Horticultural traits	Sucking type, very sweet
Comments	Late maturing
Conservation action	Mother plant conserved <i>in situ</i> , plant multiplied and conserved in National Active Germplasm Site (CISH) and orchards in Malihabad Communities





DUDHIYA GOLA	
Farmers Name	Shri Nidhi Prasad
Country/Site/community	India/ Malihabad /Gopramau
Latitude, Longitude	N 26°59'2.4", E 80°48'58.4"
Name of landrace/ farmers variety or seedling	Dudhiya Gola / Farmers variety
Local vernacular name(s)	Dudhiya Gola
Local name meaning(s)	Milky round
Number of plants	One
Relative abundance of the variety	Low
Distinguishing traits used by farmers	
Fruit Size	Roundish long, Fruit weight 200-250g, bright yellow
Leaf	Long and apex pointed
Flower	Panicle medium, Light yellow with red tinge
Stone	Medium
Main reasons for growing the landrace or seedling	For home use and exchange
Quality traits	Very attractive fruit with good taste
Market traits	Attractive fruit, late maturing with high market potential
Main use of plant	As table variety (For home use and fruit exchange)
Horticultural traits	Good for table purpose, sweet, fibrous
Comments	Market value good
Conservation action	Mother plant conserved <i>in situ</i> , plant multiplied and conserved in National Active Germplasm Site (CISH) and orchards in Malihabad Communities



MALIHABAD

GILAS	
Farmers Name	Shri Jeet Bahadur
Country/Site/community	India/ Malihabad /Mohd. Nagar Talukedari
Latitude, Longitude	N 26°56'57.5", E 80°45'10.4"
Name of landrace/ farmers variety or seedling	Gilas / Farmers variety
Local vernacular name(s)	Gilas
Local name meaning(s)	Glass
Number of plants	One
Relative abundance of the variety	Low
Distinguishing traits used by farmers	
Fruit Size	Small, round, light yellow
Leaf	Light green, narrowly longand apex pointed
Flower	Medium, light yellow
Stone	Small, fibrous
Main reasons for growing the landrace or seedling	For home use and fruit exchange
Quality traits	Tasty and juicy
Market traits	Sucking type
Main use of plant	As table variety
Horticultural traits	Sucking type, sweet, fibrous
Comments	Market value good
Conservation action	Mother plant conserved <i>in situ</i> , plant multiplied and conserved in National Active Germplasm Site (CISH) and orchards in Malihabad Communities





GOL BHADAIYA	
Farmers Name	Shri Rasheed Ahmad
Country/Site/community	India/ Malihabad / Kasmandi Kalan
Latitude, Longitude	N 26°55'32.8", E 80°45'52.5"
Name of landrace/ farmers variety or seedling	Gol Bhadaiya / Farmers variety
Local vernacular name(s)	Gol Bhadaiya
Local name meaning(s):	Round late ripening
Number of plants	One
Relative abundance of the variety	Low
Distinguishing traits used by farmers	
Fruit Size	Large round, fruit weight 500-600g, light yellow
Leaf	Large, long, apex pointed
Flower	Panicle large
Stone	Long
Main reasons for growing the landrace or seedling	For home use and fruit exchange
Quality traits	Large size fruit and good pulp content
Market traits	Medium
Main use of plant	As table variety
Horticultural traits	Table purpose, very sweet
Comments	Very large size
Conservation action	Mother plant conserved <i>in situ</i> , plant multiplied and conserved in National Active Germplasm Site (CISH) and orchards in Malihabad Communities



MALIHABAD

GOLA	
Farmers Name	Shri Sita ram
Country/Site/community:	India/ Malihabad /Sarsanda
Latitude, Longitude	N 26°57'41.6", E 80°47'45.5"
Name of landrace/ farmers variety or seedling	Gola / Farmers variety
Local vernacular name(s)	Gola
Local name meaning(s)	Round
Number of plants	One
Relative abundance of the variety	Low
Distinguishing traits used by farmers	
Fruit Size	Medium round, fruit weight 200-300g, light yellow
Leaf	Large, long, apex pointed
Flower	Panicle long and yellowish green
Stone	Long
Main reasons for growing the landrace or seedling	For home use and fruit exchange
Quality traits	Medium fruit with good taste
Market traits	Sucking type
Main use of plant	As table variety
Horticultural traits	Acidic sweet
Comments	Market value good
Conservation action	Mother plant conserved <i>in situ</i> , plant multiplied and conserved in National Active Germplasm Site (CISH) and orchards in Malihabad Communities



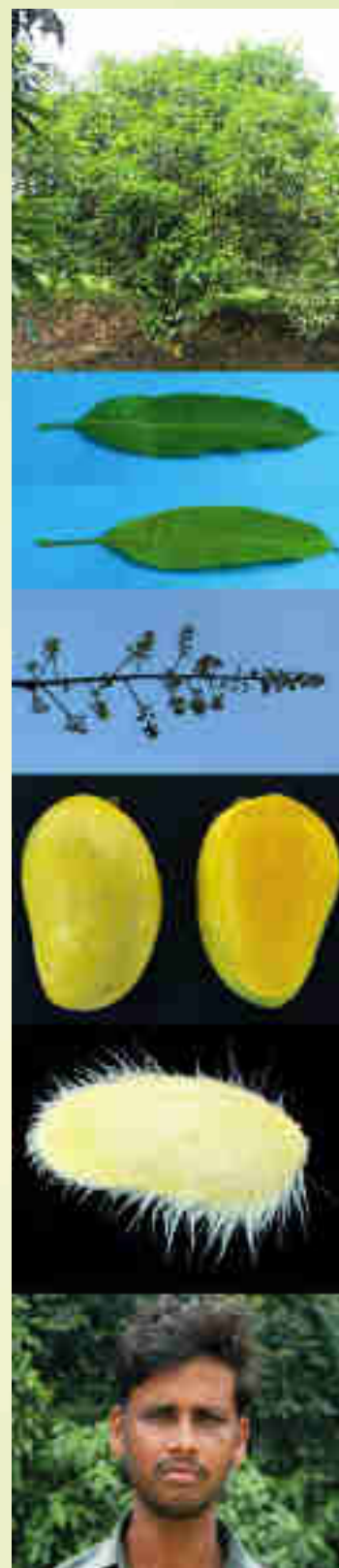


GULAB JAMUN	
Farmers Name	Shri Dori Lal
Country/Site/community	India/ Malihabad / Kasmandi Kalan
Latitude, Longitude	N 26°56'11.2", E 80°46'3.6"
Name of landrace/ farmers variety or seedling	Gulab Jamun / Farmers variety
Local vernacular name(s)	Gulab Jamun
Local name meaning(s)	Name of Sweet
Number of plants	One
Relative abundance of the variety	Low
Distinguishing traits used by farmers	
Fruit Size	Round, fruit weight 100-150g, light yellow
Leaf	Narrow short, apex pointed
Flower	Panicle small
Stone	Small
Main reasons for growing the landrace or seedling	For home use and fruit exchange
Quality traits	Medium fruit with good taste, sucking type
Market traits	Has good market value can be used for pickle
Main use of plant	As table & pickle variety (For home use and exchange)
Horticultural traits	Sucking type, very sweet
Comments	High yielder, good market price
Conservation action	Mother plant conserved <i>in situ</i> , plant multiplied and conserved in National Active Germplasm Site (CISH) and orchards in Malihabad Communities



MALIHABAD

HEERE-HAYAT	
Farmers Name	Shri Ram Khelawan
Country/Site/community	India/ Malihabad / Mohd. Nagar Talukedari
Latitude, Longitude	N 26°56'29.2", E 80°45'30.3"
Name of landrace/ farmers variety or seedling	Hire-Hayat / Farmers variety
Local vernacular name(s)	Hire-Hayat
Local name meaning(s)	Power of life
Number of plants	One
Relative abundance of the variety	Low
Distinguishing traits used by farmers	
Fruit Size	Long, medium, bright yellow
Leaf	Light green, medium long and apex pointed
Flower	Medium, light yellow
Stone	Long
Main reasons for growing the landrace or seedling	For home use and fruit exchange
Quality traits	Attractive, taste, fruit with good taste, sucking type
Market traits	Has good market value
Main use of plant	As table variety
Horticultural traits	Sucking type, sweet
Comments	Market value good
Conservation action	Mother plant conserved <i>in situ</i> , plant multiplied and conserved in National Active Germplasm Site (CISH) and orchards in Malihabad Communities





HUSNARA	
Farmers Name	Shri Baldev Baksh Singh
Country/Site/community	India/ Malihabad /Sarsanda
Latitude, Longitude	N 26°57'49.5", E 80°47'47.1"
Name of landrace/ farmers variety or seedling	Husnara / Farmers variety
Local vernacular name(s)	Husnara
Local name meaning(s)	Beautiful
Number of plants	One
Relative abundance of the variety	Low
Distinguishing traits used by farmers	
Fruit Size	Medium long, bright yellow with red
Leaf	Light green, medium long narrow and apex pointed
Flower	Long and red
Stone	Medium
Main reasons for growing the landrace or seedling	For home use and fruit exchange
Quality traits	Attractive fruit with good taste
Market traits	Has good market value
Main use of plant	As table variety
Horticultural traits	Fibre less
Comments	Market value good
Conservation action	Mother plant conserved <i>in situ</i> , plant multiplied and conserved in National Active Germplasm Site (CISH) and orchards in Malihabad Communities

MALIHABAD

JAMUN	
Farmers Name	Shri Devendra Singh
Country/Site/community	India/ Malihabad /Mohd. Nagar Talukedari
Latitude, Longitude	N 26°56'11", E 80°45'44.5"
Name of landrace/ farmers variety or seedling	Jamun / Farmers variety
Local vernacular name(s)	Jamun
Local name meaning(s)	Name of Sweet
Number of plants	One
Relative abundance of the variety	Low
Distinguishing traits used by farmers	
Fruit Size	Long, light yellow
Leaf	Small narrow with pointed apex
Flower	Medium, light yellow
Stone	Long
Main reasons for growing the landrace or seedling	For home use and fruit exchange
Quality traits	Attractive fruit with good taste
Market traits	Has good market value
Main use of plant	As table variety
Horticultural traits	Table purpose, sweet, fibrous
Comments	Maturity medium, milky
Conservation action	Mother plant conserved <i>in situ</i> , plant multiplied and conserved in National Active Germplasm Site (CISH) and orchards in Malihabad Communities





JAUHARI	
Farmers Name	Shri Baldev Baksh Singh
Country/Site/community	India/ Malihabad /Sarsanda
Latitude, Longitude	N 26°57'49", E 80°47'47.5"
Name of landrace/ farmers variety or seedling	Jauhari / Farmers variety
Local vernacular name(s)	Jauhari
Local name meaning(s)	Jeweller
Number of plants	One
Relative abundance of the variety	Low
Distinguishing traits used by farmers	
Fruit Size	Medium round, light yellow
Leaf	Light green, medium long and apex pointed
Flower	Medium, light red
Stone	Medium
Main reasons for growing the landrace or seedling	For home use and exchange
Quality traits	Good taste and aroma
Market traits	Has good market value and suitable for sucking
Main use of plant	As table and pickles variety (For home use and exchange)
Horticultural traits	Sweet
Comments	Best for pickle purpose
Conservation action	Mother plant conserved <i>in situ</i> , plant multiplied and conserved in National Active Germplasm Site (CISH) and orchards in Malihabad Communities



MALIHABAD

KACHHA MEETHA	
Farmers Name:	Shri Dhaniram
Country/Site/community	India/ Malihabad / Kasmandi Kalan
Latitude, Longitude	N 26°55'43.1", E 80°45'48.4"
Name of landrace/ farmers variety or seedling	Kachha Meetha / Farmers variety
Local vernacular name(s)	Kachha Meetha
Local name meaning(s)	Raw sweet
Number of plants	One
Relative abundance of the variety	Low
Distinguishing traits used by farmers	
Fruit Size	Medium long, fruit weight 300-400g, yellow
Leaf	Long and widen with pointed apex
Flower	Panicle medium yellow
Stone	Medium
Main reasons for growing the landrace or seedling:	For home use and fruit exchange
Quality traits	Good taste and sweet at immature stage
Market traits	Has good market value
Main use of plant:	As table variety
Horticultural traits	Table purpose, fibre medium, sweet
Comments	Market value high
Conservation action	Mother plant conserved <i>in situ</i> , plant multiplied and conserved in National Active Germplasm Site (CISH) and orchards in Malihabad Communities





KALIYA GOLA	
Farmers Name	Shri Jaggannath
Country/Site/community	India/ Malihabad /Gopramau
Latitude, Longitude	N 26°58'24.5", E 80°48'41.9"
Name of landrace/ farmers variety or seedling	Kaliya Gola / Farmers variety
Local vernacular name(s)	Kaliya Gola
Local name meaning(s)	Round mango of Kaliya
Number of plants	One
Relative abundance of the variety	Low
Distinguishing traits used by farmers	
Fruit Size	Round, yellow
Leaf	Dark green, large, apexpointed, young leaf red
Flower	Panicle medium, yellow
Stone	Medium, fibrous
Main reasons for growing the landrace or seedling	For home use and fruit exchange
Quality traits	Good taste and sweet at immature stage
Market traits	Has good market value
Main use of plant	In eating and pickles use
Horticultural traits	Good for pickle, fibrous, yield medium, sweet
Comments	Market value good
Conservation action	Mother plant conserved <i>in situ</i> , plant multiplied and conserved in National Active Germplasm Site (CISH) and orchards in Malihabad Communities

MALIHABAD

KHAS-UL-KHAS	
Farmers Name	Shri Sanjay
Country/Site/community	India/ Malihabad /Mohd. Nagar Talukedari
Latitude, Longitude	N 26°56'35.3", E 80°45'20.9"
Name of landrace/ farmers variety or seedling	Khasulkhas / Farmers variety
Local vernacular name(s)	Khasulkhas
Local name meaning(s)	Very special
Number of plants	One
Relative abundance of the variety	Low
Distinguishing traits used by farmers	
Fruit Size	Round, light yellow
Leaf	Small narrow with pointed apex
Flower	Medium, yellow
Stone	Medium
Main reasons for growing the landrace or seedling	For home use and fruit exchange
Quality traits	Fruit with good taste and juicy
Market traits	Limited market value
Main use of plant	As table variety
Horticultural traits	Sweet
Comments	High yielder
Conservation action	Mother plant conserved <i>in situ</i> , plant multiplied and conserved in National Active Germplasm Site (CISH) and orchards in Malihabad Communities





KISM	
Farmers Name	Shri Rajesh
Country/Site/community	India/ Malihabad / Kasmandi Kalan
Latitude, Longitude	N 26°55'23.2", E 80°46'21.1"
Name of landrace/ farmers variety or seedling:	Kism / Farmers variety
Local vernacular name(s)	Kism
Local name meaning(s)	Farmers variety
Number of plants	One
Relative abundance of the variety	Low
Distinguishing traits used by farmers	
Fruit Size	Medium long, fruit weight 200-300g, yellow
Leaf	Long and apex pointed
Flower	Panicle small and yellow
Stone	Medium
Main reasons for growing the landrace or seedling	For home use and exchange
Quality traits	Attractive, fruit with good taste
Market traits	Medium market value
Main use of plant	As table variety
Horticultural traits	Table purpose, very sweet
Comments	Market value high
Conservation action	Mother plant conserved <i>in situ</i> , plant multiplied and conserved in National Active Germplasm Site (CISH) and orchards in Malihabad Communities

MALIHABAD

KISM	
Farmers Name	Shri Ori Lal
Country/Site/community	India/ Malihabad / Kasmandi Kalan
Latitude, Longitude	N 26°55'32.8", E 80°45'51.4"
Name of landrace/ farmers variety or seedling	Kism / Farmers variety
Local vernacular name(s)	Kism
Local name meaning(s)	Farmers variety
Number of plants	One
Relative abundance of the variety	Low
Distinguishing traits used by farmers	
Fruit Size	Long, yellow, fruit weight 300 to 400 g
Leaf	Narrow long with pointed apex
Flower	Panicle large
Stone	Long fibrous
Main reasons for growing the landrace or seedling	For home use and fruit exchange
Quality traits	Attractive, fruit with good taste
Market traits	High market value
Main use of plant	As table variety
Horticultural traits	Regular bearer, sweet, table purpose, fiber medium
Comments	market value better
Conservation action	Mother plant conserved <i>in situ</i> , plant multiplied and conserved in National Active Germplasm Site (CISH) and orchards in Malihabad Communities

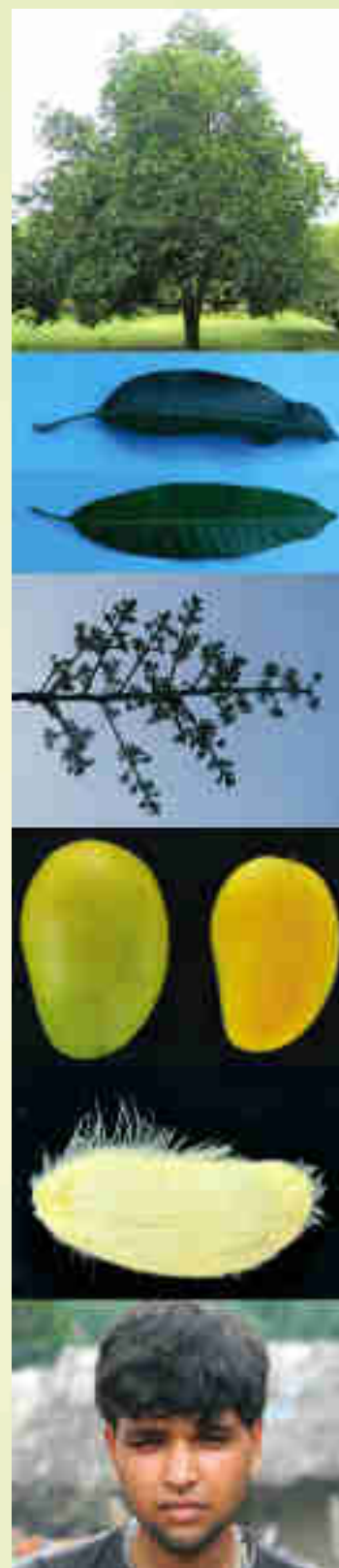




LAMBAURI	
Farmers Name	Shri Saleem Ahmad
Country/Site/community	India/ Malihabad /Mohd. Nagar Talukedari
Latitude, Longitude	N 26°56'18.6", E 80°45'34.1"
Name of landrace/ farmers variety or seedling	Lambauri / Farmers variety
Local vernacular name(s)	Lambauri
Local name meaning(s)	Long fruit
Number of plants	One
Relative abundance of the variety	Low
Distinguishing traits used by farmers	
Fruit Size	Long (upper wide and lower narrow), fruit weight 200 to 250 g, yellow
Leaf	Narrow and apex pointed
Flower	Medium, yellow
Stone	Long
Main reasons for growing the landrace or seedling	For home use and fruit exchange
Quality traits	Medium size fruit with good taste
Market traits	Medium market value, late
Main use of plant	As table variety
Horticultural traits	Sweet
Comments	Late and market value good
Conservation action	Mother plant conserved <i>in situ</i> , plant multiplied and conserved in National Active Germplasm Site (CISH) and orchards in Malihabad Communities

MALIHABAD

MADHURIMA	
Farmers Name	Shri Rajesh
Country/Site/community	India/ Malihabad / Kasmandi Kalan
Latitude, Longitude	N 26°55'32.4", E 80°45'51.3"
Name of landrace/ farmers variety or seedling	Madhurima / Farmers variety
Local vernacular name(s)	Madhurima
Local name meaning(s)	Very sweet
Number of plants	One
Relative abundance of the variety	Low
Distinguishing traits used by farmers	
Fruit Size	Long, yellow, weight 400 to 500 g
Leaf	Narrowly long and apex pointed
Flower	Panicle small and yellow
Stone	Long
Main reasons for growing the landrace or seedling	For home use and fruit exchange
Quality traits	Attractive, fruit with good taste
Market traits	High market value
Main use of plant	As table variety
Horticultural traits	Table purpose, very sweet
Comments	Market value better
Conservation action	Mother plant conserved <i>in situ</i> , plant multiplied and conserved in National Active Germplasm Site (CISH) and orchards in Malihabad Communities





MATKA GOLA	
Farmers Name	Shri Nawab Hasan
Country/Site/community	India/ Malihabad / Kasmandi Kalan
Latitude, Longitude	N 26°55'40", E 80°46'22.2"
Name of landrace/ farmers variety or seedling	Matka Gola / Farmers variety
Local vernacular name(s)	Matka Gola
Local name meaning(s)	Roundish
Number of plants	One
Relative abundance of the variety	Low
Distinguishing traits used by farmers	
Fruit Size	Size large, Round, fruit weight 400 to 500 g, yellow
Leaf	Long with pointed apex
Flower	Panicle long, yellow
Stone	Medium
Main reasons for growing the landrace or seedling	For home use and fruit exchange
Quality traits	Attractive fruit with good taste
Market traits	Medium market value, mid season
Main use of plant	As table variety
Horticultural traits	Regular bearing, sucking type, fibreless, sweet
Comments	Market price good
Conservation action	Mother plant conserved <i>in situ</i> , plant multiplied and conserved in National Active Germplasm Site (CISH) and orchards in Malihabad Communities

MALIHABAD

MUNZZAR AAMIN	
Farmers Name	Shri Md. Sadab
Country/Site/community	India/ Malihabad / Kasmandi Kalan
Latitude, Longitude	N 26°55'36.2", E 80°45'42.9"
Name of landrace/ farmers variety or seedling	Munzzar Aamin / Farmers variety
Local vernacular name(s)	Munzzar Aamin
Local name meaning(s)	Oblong mango of Munzzar
Number of plants	One
Relative abundance of the variety	One
Distinguishing traits used by farmers	
Fruit Size	Large, long and thick, fruit weight 500-700g, light yellow
Leaf	Long with pointed apex
Flower	Panicle large pinkish
Stone	Long narrow
Main reasons for growing the landrace or seedling	For home use and fruit exchange
Quality traits	Fruit with good taste, large size
Market traits	High market value
Main use of plant	As table variety
Horticultural traits	Table purpose, sweet
Comments	Market value good
Conservation action	Mother plant conserved <i>in situ</i> , plant multiplied and conserved in National Active Germplasm Site (CISH) and orchards in Malihabad Communities





NAZEER PASAND	
Farmers Name	Shri Nawab Hasan
Country/Site/community	India/ Malihabad / Kasmandi Kalan
Latitude, Longitude	N 26°55'39.5", E 80°46'25.2"
Name of landrace/ farmers variety or seedling	Nazir Pasand / Farmers variety
Local vernacular name(s)	Nazir Pasand
Local name meaning(s)	Liked by Nazir
Number of plants	One
Relative abundance of the variety	Low
Distinguishing traits used by farmers	
Fruit Size	Medium large, fruit weight 200-300g, yellow
Leaf	Short length with pointed apex
Flower	panicle small
Stone	Small
Main reasons for growing the landrace or seedling	For home use and fruit exchange
Quality traits	Fruit with good taste, large size
Market traits	Medium market value, mid season
Main use of plant	As table variety
Horticultural traits	Very sweet, good for table purpose, fibreless
Comments	Regular bearer
Conservation action	Mother plant conserved <i>in situ</i> , plant multiplied and conserved in National Active Germplasm Site (CISH) and orchards in Malihabad Communities

MALIHABAD

PAAN	
Farmers Name	Shri Nawab Hasan
Country/Site/community	India/ Malihabad / Kasmandi Kalan
Latitude, Longitude	N 26°55'40.8", E 80°46'24.2"
Name of landrace/ farmers variety or seedling	Pan / Farmers variety
Local vernacular name(s)	Pan
Local name meaning(s)	Cordate shape
Number of plants	One
Relative abundance of the variety	Low
Distinguishing traits used by farmers	
Fruit Size	Large, round, fruit weight 400-500g, light yellow
Leaf	Long and widen with pointed apex
Flower	Panicle large
Stone	Small
Main reasons for growing the landrace or seedling	For home use and fruit exchange
Quality traits	Fruit with good taste, medium size
Market traits	Medium market value, mid season
Main use of plant	As table variety
Horticultural traits	Table as well as sucking, very sweet
Comments	fruits paan shape
Conservation action	Mother plant conserved <i>in situ</i> , plant multiplied and conserved in National Active Germplasm Site (CISH) and orchards in Malihabad Communities





RAJRANI	
Farmers Name	Shri Jeet Bahadur
Country/Site/community	India/ Malihabad / Mohd. Nagar Talukedari
Latitude, Longitude	N 26°56'53.3", E 80°45'12.6"
Name of landrace/ farmers variety or seedling	Rajrani / Farmers variety
Local vernacular name(s)	Rajrani
Local name meaning(s)	Royal Queen
Number of plants	One
Relative abundance of the variety	Low
Distinguishing traits used by farmers	
Fruit Size	Long, light yellow
Leaf	Light green, narrowly long and apex pointed
Flower	Panicle large, yellow
Stone	Long and fibrous
Main reasons for growing the landrace or seedling	For home use and fruit exchange
Quality traits	Attractive, fruit with good taste
Market traits	High market value
Main use of plant	As table variety
Horticultural traits	Table as well as sucking type, sweet, fibrous,
Comments	Market value good
Conservation action	Mother plant conserved <i>in situ</i> , plant multiplied and conserved in National Active Germplasm Site (CISH) and orchards in Malihabad Communities

MALIHABAD

RANI GOLA	
Farmers Name	Shri Panai
Country/Site/community	India/ Malihabad / Sarsanda
Latitude, Longitude	N 26°57'58.8", E 80°48'5"
Name of landrace/ farmers variety or seedling	Rani Gola / Farmers variety
Local vernacular name(s)	Rani Gola
Local name meaning(s)	Round fruited mango of Rani
Number of plants	One
Relative abundance of the variety	Low
Distinguishing traits used by farmers	
Fruit Size	Round, attractive yellow
Leaf	Long with higher width and apex pointed
Flower	Panicle large, yellow
Stone	Medium
Main reasons for growing the landrace or seedling	For home use and fruit exchange
Quality traits	Attractive, fruit with good taste
Market traits	High market value
Main use of plant	As table variety
Horticultural traits	Fibreless, sucking type
Comments	Regular bearing
Conservation action	Mother plant conserved <i>in situ</i> , plant multiplied and conserved in National Active Germplasm Site (CISH) and orchards in Malihabad Communities





SADAFAR	
Farmers Name	Shri Mithu Lal
Country/Site/community	India/ Malihabad / Sarsanda
Latitude, Longitude	N 26°57'46.8", E 80°47'46.5"
Name of landrace/ farmers variety or seedling	Sadafar / Farmers variety
Local vernacular name(s)	Sadafar
Local name meaning(s)	Fruiting always (Multiple cropper)
Number of plants	One
Relative abundance of the variety	Low
Distinguishing traits used by farmers	
Fruit Size	Round, attractive yellow fruit weight 200-250 g
Leaf	Long and narrow, apex pointed
Flower	Panicle medium, yellow
Stone	Small and fibrous
Main reasons for growing the landrace or seedling	For home use and exchange
Quality traits	Fruit medium size
Market traits	Medium market value
Main use of plant	As table and pickles variety
Horticultural traits	Fibrous, acidic sweet, two crops in a year
Comments	Baramasi (Off-season flowering)
Conservation action	Mother plant conserved <i>in situ</i> , plant multiplied and conserved in National Active Germplasm Site (CISH) and orchards in Malihabad Communities

MALIHABAD

SAFEDA AAMIN	
Farmers Name	Shri Amit
Country/Site/community	India/ Malihabad / Mohd. Nagar Talukedari
Latitude, Longitude	N 26°56'15.4", E 80°45'38.8"
Name of landrace/ farmers variety or seedling	Safeda Amin / Farmers variety
Local vernacular name(s)	Safeda Amin
Local name meaning(s)	Whitish mango
Number of plants	One
Relative abundance of the variety	Low
Distinguishing traits used by farmers	
Fruit Size	Large, long, yellow
Leaf	Long and widen, apexpointed
Flower	Light yellow
Stone	Narrow long
Main reasons for growing the landrace or seedling	For home use and fruit exchange
Quality traits	Attractive, fruit with good taste
Market traits	High market value
Main use of plant	As table variety
Horticultural traits	Fibre less, sweet
Comments	Market value good
Conservation action	Mother plant conserved <i>in situ</i> , plant multiplied and conserved in National Active Germplasm Site (CISH) and orchards in Malihabad Communities





SAWANHA	
Farmers Name	Shri Kanhaiya Lal
Country/Site/community	India/ Malihabad / Sarsanda
Latitude, Longitude	N 26°58'10.7", E 80°47'51.7"
Name of landrace/ farmers variety or seedling:	Sawanha / Farmers variety
Local vernacular name(s)	Sawanha
Local name meaning(s)	Name of person
Number of plants	One
Relative abundance of the variety	Low
Distinguishing traits used by farmers	
Fruit Size	Round, attractive yellow fruit weight 180-220 g
Leaf	Long and narrow, apex pointed
Flower	Panicle medium, yellow
Stone	Medium
Main reasons for growing the landrace or seedling	For home use and fruit exchange
Quality traits	Attractive, fruit with good taste
Market traits	High market value due to late maturity
Main use of plant	As table variety
Horticultural traits	Sucking type, fibreless
Comments	Late maturing, shelf life good
Conservation action	Mother plant conserved <i>in situ</i> , plant multiplied and conserved in National Active Germplasm Site (CISH) and orchards in Malihabad Communities

MALIHABAD

SHWETA	
Farmers Name	Shri Panai
Country/Site/community	India/ Malihabad / Sarsanda
Latitude, Longitude	N 26°57'56.6", E 80°48'3.2"
Name of landrace/ farmers variety or seedling	Shweta / Farmers variety
Local vernacular name(s)	Shweta
Local name meaning(s)	Name of person
Number of plants	One
Relative abundance of the variety	Low
Distinguishing traits used by farmers	
Fruit Size	Long and thick, attractive yellow, fruit weight 300-450 g
Leaf	Long and narrow, apex pointed
Flower	Panicle long, light red
Stone	Medium and narrow
Main reasons for growing the landrace or seedling	For home use and fruit exchange
Quality traits	Attractive yellow fruit with good taste
Market traits	High market value medium maturity
Main use of plant	As table variety
Horticultural traits	Table purpose, sweet, fibreless
Comments	Market value high, the unripe fruit also sweet
Conservation action	Mother plant conserved <i>in situ</i> , plant multiplied and conserved in National Active Germplasm Site (CISH) and orchards in Malihabad Communities





TAIMURIYA	
Farmers Name	Shri Mahendra Singh
Country/Site/community	India/ Malihabad /Mohd. Nagar Talukedari
Latitude, Longitude	N 26°56'18.8", E 80°45'42.2"
Name of landrace/ farmers variety or seedling	Taimuriya / Farmers variety
Local vernacular name(s)	Taimuriya
Local name meaning(s)	Name of person
Number of plants	One
Relative abundance of the variety	Low
Distinguishing traits used by farmers	
Fruit Size	Long, yellow, fruit weight 200-250 g
Leaf	Large with pointed apex
Flower	Light yellow
Stone	Long
Main reasons for growing the landrace or seedling	For home use and fruit exchange
Quality traits	Fruit medium size
Market traits	Medium market value
Main use of plant	As table variety
Horticultural traits	Table purpose, sweet
Comments	Market value good
Conservation action	Mother plant conserved <i>in situ</i> , plant multiplied and conserved in National Active Germplasm Site (CISH) and orchards in Malihabad Communities

MALIHABAD

TUKMI HEERA	
Farmers Name	Shri Chhote Lal
Country/Site/community	India/ Malihabad /Gopramau
Latitude, Longitude	N 26°58'10.1", E 80°49'23.7"
Name of landrace/ farmers variety or seedling	Tukmi Heera / Farmers variety
Local vernacular name(s)	Tukmi Heera
Local name meaning(s)	Excellent Seedling
Number of plants	One
Relative abundance of the variety	Low
Distinguishing traits used by farmers	
Fruit Size	Oval, Fruit weight 150-200 g, bright yellow
Leaf	Dark green, long and apex pointed
Flower	Panicle medium, yellow
Stone	Long
Main reasons for growing the landrace or seedling	For home use and fruit exchange
Quality traits	Good for sucking
Market traits	High market value medium maturity
Main use of plant	As table and pickles variety
Horticultural traits	Table as well as sucking type, sweet, fibrous, yield medium,
Comments	Market value good
Conservation action	Mother plant conserved <i>in situ</i> , plant multiplied and conserved in National Active Germplasm Site (CISH) and orchards in Malihabad Communities

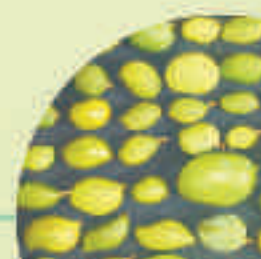
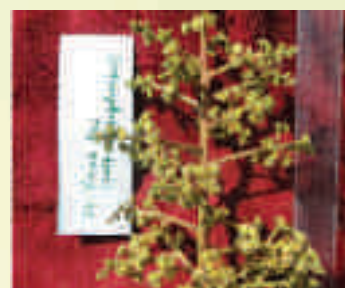




ZARDALU	
Farmers Name	Shri Parmeshwar
Country/Site/community	India/ Malihabad /Mohd. Nagar Talukedari
Latitude, Longitude	N 26°56'17.8", E 80°45'35.9"
Name of landrace/ farmers variety or seedling	Zardalu / Farmers variety
Local vernacular name(s)	Zardalu
Local name meaning(s)	Colour like apricot
Number of plants	One
Relative abundance of the variety	Low
Distinguishing traits used by farmers	
Fruit Size	Medium Long, yellow
Leaf	Long and apex pointed
Flower	Panicle large, Light yellow with red tinge
Stone	Medium
Main reasons for growing the landrace or seedling	For home use and fruit exchange
Quality traits	Attractive fruit, medium size
Market traits	Medium market value
Main use of plant	As table variety
Horticultural traits	Good for Table purpose, sweet, fibrous
Comments	High yielder
Conservation action	Mother plant conserved <i>in situ</i> , plant multiplied and conserved in National Active Germplasm Site (CISH) and orchards in Malihabad Communities

PUSA

Farmer's name	Vinod Rai
Farm location	Village Jagdishpur, Pusa, Bihar
Longitude	N25° 56'47.5"
Latitude	E085°38'44.8"
Altitude(m)	146
Crop	Mango (<i>Mangifera indica</i> L.)
Code Name	Pusa Mango - 1
Local vernacular name(s)	Biju mango, Lal Pari
Meaning of local name	Indigenous seedling type (red flesh colour on maturity)
Relative abundance of the Variety (Average Trees/HH numbers)	Low, Farmer
pictorial representation	
Distinguishing traits used by farmers to identify their variety or plant (A narration than by farmers on their variety taking into account minor differences in Colour, shape, size, width, length, height texture, habit, taste and including the following plant parts involved, Fruit, leaf, Tree Canopy, Flower, Stem/trunk, Stone)	
Colour of fruit	Green yellow with Sinduri patches
Shape	Round, Length: breadth ratio : 1.36Fruit width: 5.62 cm
Growth and bearing	Tall and heavy bearer
Fruit length and weight	7.66 cm and 140 g in weight
Leaf	Wide and long
Canopy	Spherical
Flower	Light Yellow
Stem/trunk	Smooth
Stone	Medium thin and oblong, 30 g in weight
Main reasons for maintaining diversity by farmers	For home consumption
Quality traits (Eating quality, taste, flavour (Sweet, Acid, sour-sweet etc.), aroma, pulp texture (firm, juicy, fibrous, etc.))	Sweet (Sucking type mango), fibrous, Peel weight: 30 gPulp : 58.20 % TSS: 18.16 °Brix, Acidity: 0.32 %
Market traits [Marketability, transportability, Shelf life]	Good
Main use of plant [Home use, sale, Exchange (neighbour, friends, family)]	Home use, family and friends
Conservation actions	Conserved at Pusa by different community and one set will be conserved NRCL, Muzaffarpur. 100 plants were regenerated for distribution to the community.



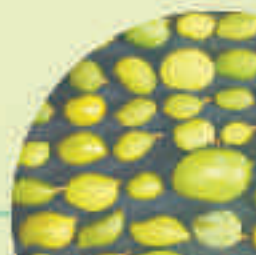
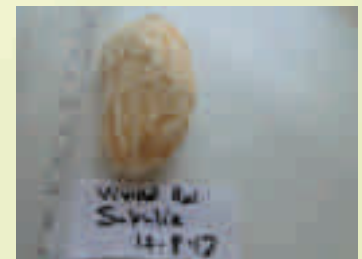


Farmer's name	Vinod Rai
Farm location	Village Jagdishpur, Pusa, Bihar
Longitude	N25° 56'56.2"
Latitude	E085°39'11.1"
Altitude(m)	152
Crop	Mango (<i>Mangifera indica</i> L.)
Code Name	Pusa Mango - 2
Local vernacular name(s)	Biju mango, Madhukupia
Meaning of local name	Indigenous seedling type, <i>Madhu</i> stands for Honey (taste of fruit like honey)
Relative abundance of the Variety (Average Trees/HH numbers)	Low, Farmer
pictorial representation	Distinguishing traits used by farmers to identify their variety or plant (A narration than by farmers on their variety taking into account minor differences in Colour, shape, size, width, length, height texture, habit, taste and including the following plant parts involved, Fruit, leaf, Tree Canopy, Flower, Stem/trunk, Stone)
Colour of fruit	Greenish with yellow ting
Shape	Oblong, Length: breadth ratio : 1.42Fruit width: 8.50 cm
Growth and bearing	Medium in height and heavy bearer
Fruit length and weight	12.10 cm and 510 g in weight
Leaf	Wide and obtuse margin
Canopy	Spherical
Flower	Brownish yellow
Stem/trunk	Smooth
Stone	Medium thin and oblong, 50 g in weight
Main reasons for maintaining diversity by farmers	For home consumption
Quality traits (Eating quality, taste, flavour (Sweet, Acid, sour-sweet etc.), aroma, pulp texture (firm, juicy, fibrous, etc.))	Highly fibrous with small stonePeel weight: 60 gPulp : 77.00 % TSS: 16.40 °Brix, Acidity: 0.47 %
Market traits [Marketability, transportability, Shelf life]	Good
Main use of plant [Home use, sale, Exchange (neighbor, friends, family)]	Home use, family and friends
Conservation actions	Conserved at Pusa by different community and one set will be conserved NRCL, Muzaffarpur. 100 plants were regenerated for distribution to the community.



PUSA

Farmer's name	Vinod Rai
Farm location	Village Jagdishpur, Pusa, Bihar
Longitude	N25° 56'56.3"
Latitude	E085°39'17.9"
Altitude(m)	149
Crop	Mango (<i>Mangifera indica</i> L.)
Code Name	Pusa Mango - 3
Local vernacular name(s)	Biju mango, Sukulia
Meaning of local name	Indigenous seedling type, Fruit appeared like commercial 'Sukul' variety
Relative abundance of the Variety (Average Trees/HH numbers)	Low, Farmer
pictorial representation	
Distinguishing traits used by farmers to identify their variety or plant (A narration than by farmers on their variety taking into account minor differences in Colour, shape, size, width, length, height texture, habit, taste and including the following plant parts involved, Fruit, leaf, Tree Canopy, Flower, Stem/trunk, Stone)	
Colour of fruit	Greenish yellow
Shape	Oblong, Length: breadth ratio : 1.30Fruit width: 6.90 cm
Growth and bearing	Tall in height and heavy bearer
Fruit length and weight	9.00 cm and 250 g in weight
Leaf	Oblong and acute margin
Canopy	Semi circular
Flower	Purplish yellow
Stem/trunk	Smooth
Stone	Medium thin and oblong, 31 g in weight
Main reasons for maintaining diversity by farmers	For home consumption
Quality traits (Eating quality, taste, flavour (Sweet, Acid, sour-sweet etc.), aroma, pulp texture (firm, juicy, fibrous, etc.))	Orange flesh colour, fibrous with small stone, not much suited for table purposes Peel weight: 60 g, Pulp Weight : 180 gPulp : 71.20 % TSS: 18.22 °Brix, Acidity: 0.75 %
Market traits [Marketability, transportability, Shelf life]	Good
Main use of plant [Home use, sale, Exchange (neighbor, friends, family)]	Home use, family and friends
Conservation actions	Conserved at Pusa by different community and one set will be conserved NRCL, Muzaffarpur. 100 plants were regenerated for distribution to the community.



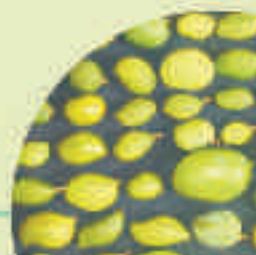
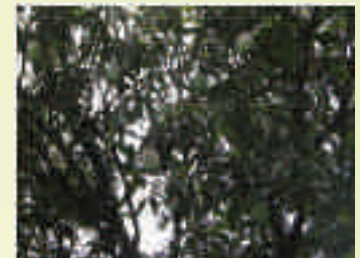


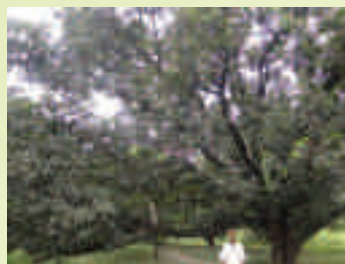
Farmer's name	Vinod Rai
Farm location	Village Jagdishpur, Pusa, Bihar
Longitude	N25° 56'51.1"
Latitude	E085°39'17.9"
Altitude(m)	149
Crop	Mango (<i>Mangifera indica</i> L.)
Code Name	Pusa Mango - 4
Local vernacular name(s)	Biju mango, Lali
Meaning of local name	Indigenous seedling type, Attains attractive reddish orange flesh colour on maturity
Relative abundance of the Variety (Average Trees/HH numbers)	Low, Farmer
pictorial representation	Distinguishing traits used by farmers to identify their variety or plant (A narration than by farmers on their variety taking into account minor differences in Colour, shape, size, width, length, height texture, habit, taste and including the following plant parts involved, Fruit, leaf, Tree Canopy, Flower, Stem/trunk, Stone)
Colour of fruit	Deep yellow
Shape	Oblong, Length: breadth ratio : 1.22Fruit width: 6.26 cm
Growth and bearing	Tall in height and heavy bearer
Fruit length and weight	7.60 cm and 160 g in weight
Leaf	Long and acute margin
Canopy	Semi circular
Flower	Dark Yellow
Stem/trunk	Smooth
Stone	Medium thin and oblong, 30 g in weight
Main reasons for maintaining diversity by farmers	For home consumption
Quality traits (Eating quality, taste, flavour (Sweet, Acid, sour-sweet etc.), aroma, pulp texture (firm, juicy, fibrous, etc.))	Red flesh colour, Excellent eating quality with small stone, Peel weight: 30 g, Pulp Weight : 180 gPulp : 58.60 % TSS: 17.48 °Brix, Acidity: 0.32 %
Market traits [Marketability, transportability, Shelf life]	Good
Main use of plant [Home use, sale, Exchange (neighbor, friends, family)]	Home use, family and friends
Conservation actions	Conserved at Pusa by different community and one set will be conserved NRCL, Muzaffarpur. 100 plants were regenerated for distribution to the community.



PUSA

Farmer's name	Upendra Thakur
Farm location	Village Bhuskaul, Pusa, Bihar
Longitude	N26° 05'44.6"
Latitude	E085°26'38.7"
Altitude(m)	144
Crop	Mango (<i>Mangifera indica</i> L.)
Code Name	Pusa Mango - 5
Local vernacular name(s)	Biju mango
Meaning of local name	Indigenous seedling type,
Relative abundance of the Variety (Average Trees/HH numbers)	Low, Farmer
pictorial representation	
Distinguishing traits used by farmers to identify their variety or plant (A narration than by farmers on their variety taking into account minor differences in Colour, shape, size, width, length, height texture, habit, taste and including the following plant parts involved, Fruit, leaf, Tree Canopy, Flower, Stem/trunk, Stone)	
Colour of fruit	Red yellow with dark yellow shoulder
Shape	Oblong, Length: breadth ratio : 1.56 Fruit width: 7.18 cm
Growth and bearing	Medium in height and heavy bearer
Fruit length and weight	11.20 cm and 306 g in weight
Leaf	Small and acute margin
Canopy	Tall and Spreading
Flower	Light Yellow
Stem/trunk	Smooth
Stone	Medium thin and oblong, 45 g in weight
Main reasons for maintaining diversity by farmers	For home consumption
Quality traits (Eating quality, taste, flavour (Sweet, Acid, sour-sweet etc.), aroma, pulp texture (firm, juicy, fibrous, etc..))	Have very less fibre with small stone, orange flesh colour. Peel weight: 52 g Pulp : 68.42 % TSS: 15.55 °Brix, Acidity: 0.32 %
Market traits [Marketability, transportability, Shelf life]	Good
Main use of plant [Home use, sale, Exchange (neighbor, friends, family)]	Home use, family and friends
Conservation actions	Conserved at Pusa by different community and one set will be conserved NRCL, Muzaffarpur. 100 plants were regenerated for distribution to the community.



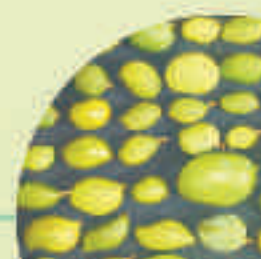
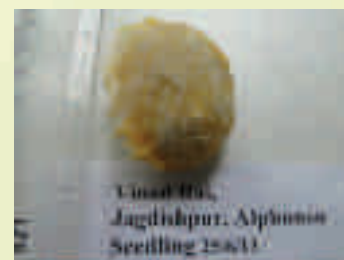
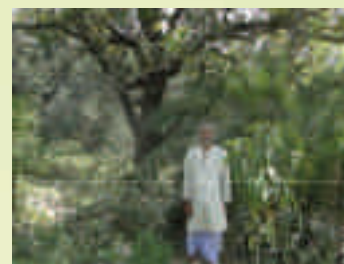


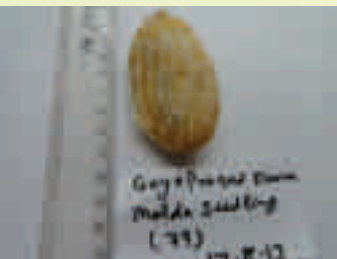
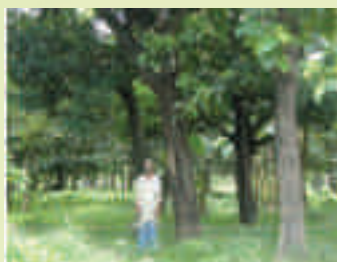
Farmer's name	Kailash Prasad Rai
Farm location	Village Jagdishpur, Pusa, Bihar
Longitude	N25° 56'47.3"
Latitude	E085 ° 38'45.1"
Altitude(m)	145
Crop	Mango (<i>Mangifera indica</i> L.)
Code Name	Pusa Mango - 6
Local vernacular name(s)	Biju mango
Meaning of local name	Indigenous seedling type,
Relative abundance of the Variety (Average Trees/HH numbers)	Low, Farmer
pictorial representation	Distinguishing traits used by farmers to identify their variety or plant (A narration than by farmers on their variety taking into account minor differences in Colour, shape, size, width, length, height texture, habit, taste and including the following plant parts involved, Fruit, leaf, Tree Canopy, Flower, Stem/trunk, Stone)
Colour of fruit	Dark yellow
Shape	Oblong, Length: breadth ratio : 1.39Fruit width: 6.20 cm
Growth and bearing	Medium in height and heavy bearer
Fruit length and weight	8.60 cm and 184 g in weight
Leaf	Medium sized and acute margin
Canopy	Tall and Spreading
Flower	Greenish Yellow
Stem/trunk	Smooth
Stone	Medium thin and oblong, 36 g in weight
Main reasons for maintaining diversity by farmers	For home consumption
Quality traits (Eating quality, taste, flavour (Sweet, Acid, sour-sweet etc.), aroma, pulp texture (firm, juicy, fibrous, etc..))	Very tasty fruit with attractive colour, have very less fibre with small stone, orange flesh colour. Peel weight: 30 gPulp : 63.84 % TSS: 19.70 °Brix, Acidity: 0.323%
Market traits [Marketability, transportability, Shelf life]	Good, better shelf life for 7 days at room temperature.
Main use of plant [Home use, sale, Exchange (neighbor, friends, family)]	Home use, family and friends
Conservation actions	Conserved at Pusa by different community and one set will be conserved NRCL, Muzaffarpur. 100 plants were regenerated for distribution to the community.



PUSA

Farmer's name	Vinod Rai
Farm location	Village Jagdishpur, Pusa, Bihar
Longitude	N25° 56'51.1"
Latitude	E085 ° 39'70.7"
Altitude(m)	149
Crop	Mango (<i>Mangifera indica</i> L.)
Code Name	Pusa Mango - 7
Local vernacular name(s)	Biju mango, Alphanso seedling
Meaning of local name	Indigenous seedling type, Plants obtained from sowing of stoned of Alphanso
Relative abundance of the Variety (Average Trees/HH numbers)	Low, Farmer
pictorial representation	
Distinguishing traits used by farmers to identify their variety or plant (A narration than by farmers on their variety taking into account minor differences in Colour, shape, size, width, length, height texture, habit, taste and including the following plant parts involved, Fruit, leaf, Tree Canopy, Flower, Stem/trunk, Stone)	
Colour of fruit	Reddish yellow
Shape	Round, Length: breadth ratio : 1.19Fruit width: 5.58 cm
Growth and bearing	Medium in height and heavy bearer
Fruit length and weight	6.70 cm and 120 g in weigh
Leaf	Medium sized and acute margin
Canopy	Tall and Spreading
Flower	Reddish Yellow
Stem/trunk	Smooth
Stone	Medium thin and oblong, 44 g in weight
Main reasons for maintaining diversity by farmers	For home consumption
Quality traits (Eating quality, taste, flavour (Sweet, Acid, sour-sweet etc.), aroma, pulp texture (firm, juicy, fibrous, etc.))	Highly fibrous, Very tasty fruit with yellow flesh colour, Excellent eating quality with small stone, orange flesh colour. Peel weight: 30 gPulp : 43.00 % TSS: 21.34 °Brix, Acidity: 0.32%
Market traits [Marketability, transportability, Shelf life]	Good,
Main use of plant [Home use, sale, Exchange (neighbor, friends, family)]	Home use, family and friends
Conservation actions	Conserved at Pusa by different community and one set will be conserved NRCL, Muzaffarpur. 100 plants were regenerated for distribution to the community.



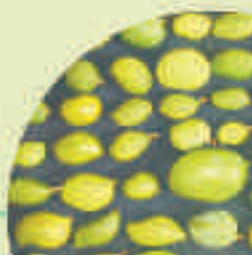


Farmer's name	Gaya Prasad Sharma
Farm location	Village Bhuskaul, Pusa, Bihar
Longitude	N25° 58'32.3"
Latitude	E085 ° 38'49.1"
Altitude(m)	145
Crop	Mango (<i>Mangifera indica</i> L.)
Code Name	Pusa Mango - 8
Local vernacular name(s)	Malda Biju mango
Meaning of local name	Indigenous seedling type, Similar to Malda in taste, shape and colour.
Relative abundance of the Variety (Average Trees/HH numbers)	Low, Farmer
pictorial representation	Distinguishing traits used by farmers to identify their variety or plant (A narration than by farmers on their variety taking into account minor differences in Colour, shape, size, width, length, height texture, habit, taste and including the following plant parts involved, Fruit, leaf, Tree Canopy, Flower, Stem/trunk, Stone)
Colour of fruit	Greenish with yellow ting
Shape	Oblong Length: breadth ratio : 1.56 Fruit width: 6.91 cm
Growth and bearing	Medium in height and heavy bearer
Fruit length and weight	10.66 cm and 308 g in weight
Leaf	Wide and obtuse margin
Canopy	Tall and Spreading
Flower	Greenish Yellow
Stem/trunk	Smooth
Stone	Medium thin and oblong, 49 g in weight
Main reasons for maintaining diversity by farmers	For home consumption
Quality traits (Eating quality, taste, flavour (Sweet, Acid, sour-sweet etc.), aroma, pulp texture (firm, juicy, fibrous, etc.))	Thick peel having very less fibre with orange flesh colour, Excellent eating quality with small stone, Peel weight: 59 g Pulp : 64.20 % TSS: 19.64 °Brix, Acidity: 0.23%
Market traits [Marketability, transportability, Shelf life]	Good
Main use of plant [Home use, sale, Exchange (neighbor, friends, family)]	Home use, family and friends
Conservation actions	Conserved at Pusa by different community and one set will be conserved NRCL, Muzaffarpur. 100 plants were regenerated for distribution to the community.

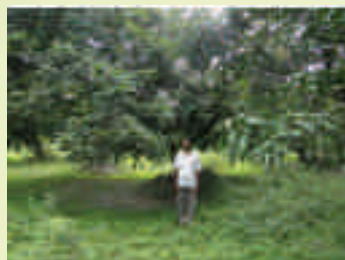


PUSA

Farmer's name	Raghupati Prasad Singh
Farm location	Village Mahamada, Pusa, Bihar
Longitude	N26° 00'27.8"
Latitude	E085 ° 41'30.1"
Altitude(m)	171
Crop	Mango (<i>Mangifera indica</i> L.)
Code Name	Pusa Mango - 9
Local vernacular name(s)	Malada Biju, Sona Malda
Meaning of local name	Indigenous seedling type, Similar to Malda in taste, shape but pulp is golden in colour
Relative abundance of the Variety (Average Trees/HH numbers)	Low, Farmer
pictorial representation	
Distinguishing traits used by farmers to identify their variety or plant (A narration than by farmers on their variety taking into account minor differences in Colour, shape, size, width, length, height texture, habit, taste and including the following plant parts involved, Fruit, leaf, Tree Canopy, Flower, Stem/trunk, Stone)	
Colour of fruit	Greenish yellow
Shape	Elongated Length: breadth ratio : 1.15 Fruit width: 6.15 cm
Growth and bearing	Medium in height and heavy bearer
Fruit length and weight	9.35 cm and 168 g in weight
Leaf	Long and acute margin
Canopy	Medium Sized and Spreading
Flower	Greenish Yellow
Stem/trunk	Smooth
Stone	Medium thin and oblong, 24 g in weight
Main reasons for maintaining diversity by farmers Quality traits	For home consumption Have very less fibre with dark
(Eating quality, taste, flavour (Sweet, Acid, sour-sweet etc.), aroma, pulp texture (firm, juicy, fibrous, etc.))	orange flesh colour, less sweet, Peel weight: 28 g Pulp : 68.87 % TSS: 12.83 °Brix, Acidity: 0.32%
Market traits [Marketability, transportability, Shelf life]	Good
Main use of plant [Home use, sale, Exchange (neighbor, friends, family)]	Home use, family and friends
Conservation actions	Conserved at Pusa by different community and one set will be conserved NRCL, Muzaffarpur. 100 plants were regenerated for distribution to the community.

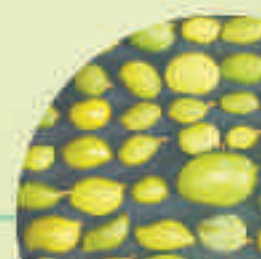


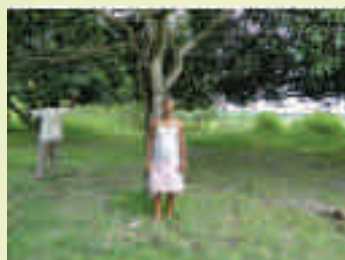
Farmer's name	Ramji Mahto
Farm location	Village Mahamada, Pusa, Bihar
Longitude	N25° 59'58.8"
Latitude	E085 ° 39'05.7"
Altitude(m)	174
Crop	Mango (<i>Mangifera indica</i> L.)
Code Name	Pusa Mango - 10
Local vernacular name(s)	Sipia Biju
Meaning of local name	Indigenous seedling type, Similar to local cultivar Sipia in taste, shape and colour
Relative abundance of the Variety (Average Trees/HH numbers)	Low, Farmer
pictorial representation	Distinguishing traits used by farmers to identify their variety or plant (A narration than by farmers on their variety taking into account minor differences in Colour, shape, size, width, length, height texture, habit, taste and including the following plant parts involved, Fruit, leaf, Tree Canopy, Flower, Stem/trunk, Stone)
Colour of fruit	Yellow
Shape	Elongated Length: breadth ratio : 1.85 Fruit width: 5.33 cm
Growth and bearing	Medium in height and heavy bearer
Fruit length and weight	9.83 cm and 170 g in weight
Leaf	Small sized and acute margin
Canopy	Medium Sized and Spreading habit
Flower	Light Yellow
Stem/trunk	Smooth
Stone	Medium thin and oblong, 30 g in weight
Main reasons for maintaining diversity by farmers	For home consumption
Quality traits (Eating quality, taste, flavour (Sweet, Acid, sour-sweet etc.), aroma, pulp texture (firm, juicy, fibrous, etc.))	Have very less fibre, excellent eating quality with orange flesh colour, very sweet, Peel weight: 40 g Pulp : 57.25 % TSS: 21.50 °Brix, Acidity: 0.23%
Market traits [Marketability, transportability, Shelf life]	Good
Main use of plant [Home use, sale, Exchange (neighbor, friends, family)]	Home use, family and friends
Conservation actions	Conserved at Pusa by different community and one set will be conserved NRCL, Muzaffarpur. 100 plants were regenerated for distribution to the community.



PUSA

Farmer's name	Chandeshwar Prasad Singh
Farm location	Village Mahmoodpur Kothi, Muraul, Muzaffarpur, Bihar
Longitude	N26° 03'12.9"
Latitude	E085 ° 31'19.9"
Altitude(m)	146
Crop	Mango (<i>Mangifera indica</i> L.)
Code Name	Pusa Mango - 11
Local vernacular name(s)	Sukul Biju,
Meaning of local name	Indigenous seedling type, Similar to local cultivar Sukul in taste, shape and colour
Relative abundance of the Variety (Average Trees/HH numbers)	Low, Farmer
pictorial representation	
Distinguishing traits used by farmers to identify their variety or plant (A narration than by farmers on their variety taking into account minor differences in Colour, shape, size, width, length, height texture, habit, taste and including the following plant parts involved, Fruit, leaf, Tree Canopy, Flower, Stem/trunk, Stone)	
Colour of fruit	Yellowish orange
Shape	Oblong Length: breadth ratio : 1.72 Fruit width: 6.60 cm
Growth and bearing	Medium in height and heavy bearer
Fruit length and weight	11.32 cm and 243 g in weight
Leaf	Large sized and obtuse margin
Canopy	Medium Sized and Spreading habit
Flower	Greenish Yellow
Stem/trunk	Smooth
Stone	Medium thin and oblong, 43 g in weight
Main reasons for maintaining diversity by farmers	For home consumption
Quality traits (Eating quality, taste, flavour (Sweet, Acid, sour-sweet etc.), aroma, pulp texture (firm, juicy, fibrous, etc.))	Rich in fibre, sucking type, dark orange flesh colour, sweet, Peel weight: 46 g Pulp : 71.39 % TSS: 15.70 °Brix, Acidity: 0.37%
Market traits [Marketability, transportability, Shelf life]	Good, excellent for Pickle making and have better keeping quality for a week.
Main use of plant [Home use, sale, Exchange (neighbor, friends, family)]	Home use, family and friends
Conservation actions	Conserved at Pusa by different community and one set will be conserved NRCL, Muzaffarpur. 100 plants were regenerated for distribution to the community.



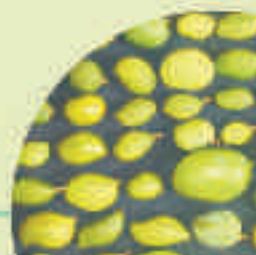


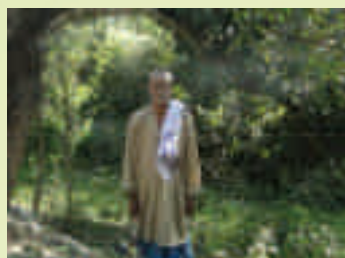
Farmer's name	Rajesh Thakur
Farm location	Village Malinagar, Pusa, Bihar
Longitude	N26° 00'27.8"
Latitude	E085°41'30.1"
Altitude(m)	165
Crop	Mango (<i>Mangifera indica</i> L.)
Code Name	Pusa Mango - 12
Local vernacular name(s)	Sipia Biju
Meaning of local name raised from seeds of Local cultivar 'Sipia'	Indigenous seedling type, Plant
Relative abundance of the Variety (Average Trees/HH numbers) pictorial representation	Low, Farmer
Distinguishing traits used by farmers to identify their variety or plant (A narration than by farmers on their variety taking into account minor differences in Colour, shape, size, width, length, height texture, habit, taste and including the following plant parts involved, Fruit, leaf, Tree Canopy, Flower, Stem/trunk, Stone)	
Colour of fruit	Light yellow
Shape	RoundLength: breadth ratio : 1.18Fruit width: 6.16 cm
Growth and bearing	Tall in height and heavy bearer
Fruit length and weight	7.30 cm and 150 g in weight
Leaf	Wide and obtuse margin
Canopy	Semi circular
Flower	Light Yellow
Stem/trunk	Smooth
Stone	Medium thin and round upward, 30 g in weight
Main reasons for maintaining diversity by farmers	For home consumption
Quality traits (Eating quality, taste, flavour (Sweet, Acid, sour-sweet etc.), aroma, pulp texture (firm, juicy, fibrous, etc.))	Orange colour flesh, less fibrous, Excellent eating quality with medium sized stone, Peel weight: 30 g, Pulp Weight : Pulp : 58.00 % TSS: 17.06 °Brix, Acidity: 0.40 %
Market traits [Marketability, transportability, Shelf life]	Good, suited for juice making due to consistent pulp texture
Main use of plant [Home use, sale, Exchange (neighbor, friends, family)]	Home use, family and friends
Conservation actions	Conserved at Pusa by different community and one set will be conserved NRCL, Muzaffarpur. 100 plants were regenerated for distribution to the community.



PUSA

Farmer's name	Ram Rekha Thakur
Farm location	Village Dhobgama, Pusa, Bihar
Longitude	N25° 57'32.7"
Latitude	E085°38'17.7"
Altitude(m)	161
Crop	Mango (<i>Mangifera indica</i> L.)
Code Name	Pusa Mango - 13
Local vernacular name(s)	Biju mango
Meaning of local name	Indigenous seedling type, Plants was raised from seeds of unknown varsities.
Relative abundance of the Variety (Average Trees/HH numbers)	Low, Farmer
pictorial representation	
Distinguishing traits used by farmers to identify their variety or plant (A narration than by farmers on their variety taking into account minor differences in Colour, shape, size, width, length, height texture, habit, taste and including the following plant parts involved, Fruit, leaf, Tree Canopy, Flower, Stem/trunk, Stone)	
Colour of fruit	Light yellow
Shape	Oblong and ovate Length: breadth ratio : 1.36Fruit width: 7.48 cm
Growth and bearing	Tall in height and heavy bearer
Fruit length and weight	10.13 cm and 300 g in weight
Leaf	Large sized obtuse in margin
Canopy	Semi circular
Flower	Dark Yellow
Stem/trunk	Smooth
Stone	Medium thin, 50 g in weight
Main reasons for maintaining diversity by farmers	For home consumption
Quality traits (Eating quality, taste, flavour (Sweet, Acid, sour-sweet etc.), aroma, pulp texture (firm, juicy, fibrous, etc.))	Having less fibre, Orange colour flesh with attractive colour, Peel weight: 60 g, Pulp : 61.25% TSS: 18.55 °Brix, Acidity: 0.20 %
Market traits [Marketability, transportability, Shelf life]	May fetch better price due to attractive colour
Main use of plant [Home use, sale, Exchange (neighbor, friends, family)]	Home use, family and friends
Conservation actions	Conserved at Pusa by different community and one set will be conserved NRCL, Muzaffarpur. 100 plants were regenerated for distribution to the community.



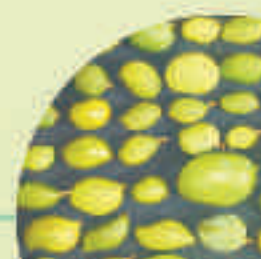


Farmer's name	Vinod Rai
Farm location	Village Jagdishpur, Pusa, Bihar
Longitude	N26° 00'27.8"
Latitude	E085°41'30.1"
Altitude(m)	165
Crop	Mango (<i>Mangifera indica</i> L.)
Code Name	Pusa Mango - 14
Local vernacular name(s)	Sukul selection
Meaning of local name	Indigenous seedling type, taken from Sukul variety
Relative abundance of the Variety (Average Trees/HH numbers)	Low, Farmer
pictorial representation	Distinguishing traits used by farmers to identify their variety or plant (A narration than by farmers on their variety taking into account minor differences in Colour, shape, size, width, length, height texture, habit, taste and including the following plant parts involved, Fruit, leaf, Tree Canopy, Flower, Stem/trunk, Stone)
Colour of fruit	Yellow to light red
Shape	OblongLength: breadth ratio : 1.65Fruit width: 6.92 cm
Growth and bearing	Medium sized and mild bearer
Fruit length and weight	11.42 cm and 300 g in weight
Leaf	Oblong and acute margin.
Canopy	Semi circular
Flower	Dark Yellow
Stem/trunk	Smooth
Stone	Medium thin and round upward, 40 g in weight
Main reasons for maintaining diversity by farmers	For home consumption
Quality traits (Eating quality, taste, flavour (Sweet, Acid, sour-sweet etc.), aroma, pulp texture (firm, juicy, fibrous, etc.))	Light Orange flesh colour, fibrous, Good blend of sugars and acids with oblong stone, Peel weight: 30 g, Pulp Weight : 230 gPulp : 74.20 % TSS: 17.40 °Brix, Acidity: 0.45 %
Market traits [Marketability, transportability, Shelf life]	Excellent
Main use of plant [Home use, sale, Exchange (neighbor, friends, family)]	Home use, family and friends
Conservation actions	Conserved at Pusa by different community and one set will be conserved NRCL, Muzaffarpur. 100 plants were regenerated for distribution to the community.



PUSA

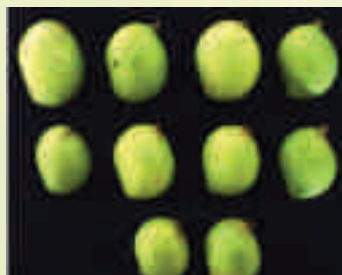
Farmer's name	Niranjan Kumar/Vinod Rai
Farm location	Village Jagdishpur, Pusa, Bihar
Longitude	N26° 00'27.8"
Latitude	E085° 41'30.1"
Altitude(m)	165
Crop	Mango (<i>Mangifera indica</i> L.)
Code Name	Pusa Mango - 15
Local vernacular name(s)	Malda Biju mango
Meaning of local name	Indigenous seedling type, fruit obtained from seeds sown of Malda fruit.
Relative abundance of the Variety (Average Trees/HH numbers)	Low, Farmer
pictorial representation	
Distinguishing traits used by farmers to identify their variety or plant (A narration than by farmers on their variety taking into account minor differences in Colour, shape, size, width, length, height texture, habit, taste and including the following plant parts involved, Fruit, leaf, Tree Canopy, Flower, Stem/trunk, Stone)	
Colour of fruit	Greenish yellow
Shape	Round, Length: breadth ratio : 1.40Fruit width: 5.58 cm
Growth and bearing	Medium in height and heavy bearer
Fruit length and weight	8.38 cm and 170 g in weight
Leaf	Medium sized, long and acute margin
Canopy	Tall and Spreading
Flower	Reddish Yellow
Stem/trunk	Smooth
Stone	Medium thin and oblong, 40 g in weight
Main reasons for maintaining diversity by farmers	For home consumption
Quality traits (Eating quality, taste, flavour (Sweet, Acid, sour-sweet etc.), aroma, pulp texture (firm, juicy, fibrous, etc.))	Highly fibrous, Very tasty fruit with yellow flesh colour, with small stone, Peel weight: 40 g Pulp : 57.40 % TSS: 18.44 °Brix, Acidity: 0.37%
Market traits [Marketability, transportability, Shelf life]	Good
Main use of plant [Home use, sale, Exchange (neighbor, friends, family)]	Home use, family and friends
Conservation actions	Conserved at Pusa by different community and one set will be conserved NRCL, Muzaffarpur. 100 plants were regenerated for distribution to the community.



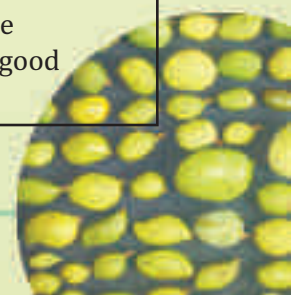


Farmer's name	Rajneshwar Thakur
Farm location	Village Dhobgama, Pusa, Bihar
Longitude	N25° 58'09.6"
Latitude	E085° 38'16.0"
Altitude(m)	172
Crop	Mango (<i>Mangifera indica</i> L.)
Code Name	Pusa Mango - 16
Local vernacular name(s)	Biju mango
Meaning of local name	Indigenous seedling type,
Relative abundance of the Variety (Average Trees/HH numbers)	Low, Farmer
pictorial representation	Distinguishing traits used by farmers to identify their variety or plant (A narration than by farmers on their variety taking into account minor differences in Colour, shape, size, width, length, height texture, habit, taste and including the following plant parts involved, Fruit, leaf, Tree Canopy, Flower, Stem/trunk, Stone)
Colour of fruit	Greenish yellow
Shape	Round, Length: breadth ratio : 1.46Fruit width: 6.60 cm
Growth and bearing	Medium in height and Good yielder
Fruit length and weight	9.65 cm and 240 g in weight
Leaf	Medium sized, long and acute margin
Canopy	Tall and Spreading
Flower	Light Yellow
Stem/trunk	Smooth
Stone	Medium thin and oblong, 40 g in weight
Main reasons for maintaining diversity by farmers	For home consumption
Quality traits (Eating quality, taste, flavour (Sweet, Acid, sour-sweet etc.), aroma, pulp texture (firm, juicy, fibrous, etc.))	Least fibrous, Very tasty fruit with orange flesh colour, with small stone, Peel weight: 80 g Pulp : 70.00 % TSS: 17.50 °Brix, Acidity: 0.43%
Market traits [Marketability, transportability, Shelf life]	Good, Export quality due to balance TSS: acid blend ratio
Main use of plant [Home use, sale, Exchange (neighbor, friends, family)]	Home use, family and friends
Conservation actions	Conserved at Pusa by different community and one set will be conserved NRCL, Muzaffarpur. 100 plants were regenerated for distribution to the community.





MALANGI	
Farmers Name	Dattatreya Hegde
Country/Site/community	India/ Sirsi / Salkani
Latitude	14°39'27.6" N
Longitude	74°43'41.6" E
Altitude (m)	543
Name of landrace/ farmers variety or seedling	Malanji / Farmers variety
Local vernacular name(s)	Malanji Appe
Local name meaning(s)	Aromatic Pickle Mango originally derived from Malanji village from a farmland near Banavasi
Distinguishing traits used by farmers	
Tree canopy	Broadly Pyramidal with intermediate dense foliage
Leaf	About 17 cm long; oblong shape with wavy margin and dark green colour; mildly aromatic
Flower	Yellowish Green
Fruit	5.00 cm long ; oblong shaped; light green colour strongly aromatic with typical cumin odour
Main reasons for growing the landrace or seedling	For home consumption as well as commercial purposes.
Quality traits	Fruit skin colour is light green and with smooth surface texture, fruit is non-waxy in nature, pulp is very juicy with strong aroma with sour taste. Shelf life is more than one year.
Market traits	It is mainly used for pickling purpose, where the whole fruit is used for pickling.
Main use of plant	Whole fruit mango pickle type (<i>Appe</i> Type)
Horticultural traits	Regular bearer.
Comments	Highly preferred by the communities. Fetches good market value

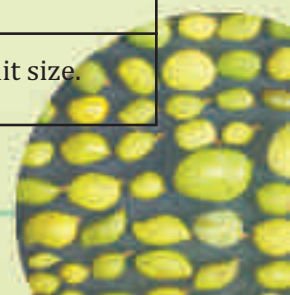


MAVINKATTA	
Farmers's Name	Eshanna
Country/Site/community	India/ Sirsi / Amchimane
Latitude	14°40'8.3" N
Longitude	74°45'52.6"E
Altitude (m)	550
Name of landrace/ farmers' variety or seedling	Mavinkatta / Farmers' variety
Local vernacular name(s)	Mavinkatta Appe
Local name meaning(s)	Aromatic Pickle Mango originally derived from Mavinkatta village in Sirsi Taluk
Distinguishing traits used by farmers	
Tree canopy	Oblong shaped with dense foliage
Leaf	About 20 cm long; green; Oblong shaped with wavy margin and dark green colour; mild aroma
Flower	Light Green
Fruit	About 8.0 cm long; oblong shape and dark green in colour with strong aroma with typical appe odour
Main reasons for growing the landrace or seedling	For home consumption as wells as commercial purposes
Quality traits:	Fruit skin colour is dark green and with smooth surface texture. Fruit is non-waxy in nature. Pulp is slightly juicy with strong aroma with sour taste. It is mainly used for pickling purpose, where the whole fruit is used for pickling. Shelf life is one year.
Market traits	It is mainly used for pickling purpose, where the whole fruit is used for pickling.
Main use of plant	Whole Fruit Mango Pickle type (Appe Type)
Horticultural traits	Regular bearer and good bearing every year
Comments	It is preferred for good yielding ability even in drier areas.



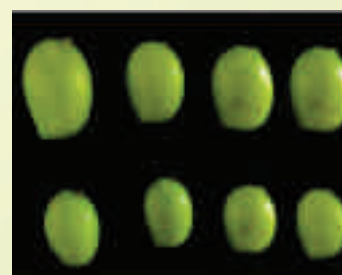


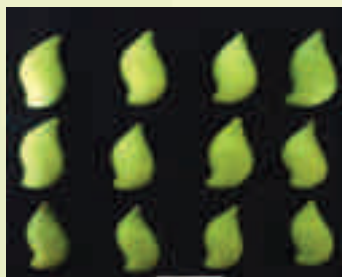
DANNALLI	
Farmers Name	Dattatreya Hegde
Country/Site/community	India/ Sirsi / Salkani
Latitude	14 ⁰ 39'27.6" N;
Longitude	74 ⁰ 43'41.6"E
Altitude (m)	543
Name of landrace/ farmers variety or seedling	Dannalli / Farmers variety
Local vernacular name(s)	Dannalli Appe
Local name meaning(s)	Aromatic Pickle Mango originally derived from Danalli village
Distinguishing traits used by farmers	
Tree canopy	Oblong shape with Intermediate foliage
Leaf	About 19 cm long; Oblong shaped with wavy margin and dark green colour. Mild aroma.
Flower	Yellow with little dark spots
Fruit	About 6.5 long; Oblong shaped and green
Main reasons for growing the landrace or seedling	For home consumption as well as commercial purposes.
Quality traits	Fruit skin colour is green and with rough surface texture, fruit is non-waxy in nature, pulp is slightly juicy with mild aroma and sour taste, it is mainly used for pickling purpose. Shelf life is one year.
Market traits:	It is mainly used for pickling purposes where the whole fruit is used for pickling
Main use of plant	Whole Fruit Mango Pickle type (Appe Type)
Horticultural traits	Regular bearer
Comments	Slightly irregular in fruit size.



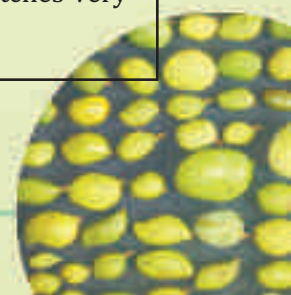
SIRSI

KALKAI	
Farmers Name	Mangala Murhty
Country/Site/community	India/ Sirsi / Salkani
Latitude	14 ⁰ 39'27.6" N
Longitude	74 ⁰ 43'41.6"E
Altitude (m)	543
Name of landrace/ farmers variety or seedling	Kalkai / Farmers variety
Local vernacular name(s)	Kalkai Appe
Local name meaning(s)	Aromatic Pickle Mango originally derived from Kalkai village.
Distinguishing traits used by farmers	
Tree canopy	Semi circular shaped and dense foliage
Leaf	About 18 cm long; Oblong shaped with entire margin and pale green colour. No aroma
Flower	Yellowish Green
Fruit	About 4.5 cm; Roundish, Light green colour,
Main reasons for growing the landrace or seedling	For home consumption as well as commercial purposes.
Quality traits	Mild Aroma, Good Keeping Quality, Fruit pulp remains white even after one year of preservation
Market traits	Smooth fruit skin, Light green in colour
Main use of plant	Whole Fruit Mango Pickle type (Appe Type)
Horticultural traits	Regular bearer
Comments	Preferred for mixing with other varieties with strong aroma





HALADOTA	
Farmers Name	S. P. Hegde
Country/Site/community	India/ Sirsi / Haldota
Latitude	14 ⁰ 39'27.6" N
Longitude	74 ⁰ 43'41.6"E
Altitude (m)	580
Name of landrace/ farmers variety or seedling	Haladota / Farmers' variety
Local vernacular name(s)	Haladota Appe
Local name meaning(s)	Aromatic Pickle Mango originally derived from Haldota village near Sirsi.
Distinguishing traits used by farmers	
Tree canopy	Oblong shaped with dense foliage
Leaf	About 19 cm long; oblong shaped with entire margin and green colour. Mild aroma.
Flower	Green with reddish patch
Fruit	About 7 cm; elongated shaped with green colour Good aroma of a typical Appe variety
Main reasons for growing the landrace or seedling	Farmer's prefer it because of the longish fruit shape for home consumption as well as commercial purposes.
Quality traits	Strongly aromatic, The fruit remains white and keeps the brittle nature even after one year of preservation.
Market traits	Longish fruit type with serpentine shape of the fruit.
Main use of plant	Whole Fruit Mango Pickle type (Appe Type)
Horticultural traits	Shows alternative bearing
Comments	Good market value. Fetches very good price.

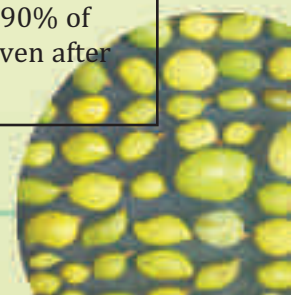


NANDAGAR	
Farmers Name	Mangal murthy
Country/Site/community	India/ Sirsi / Salkani
Latitude	14 ⁰ 39'27.6" N
Longitude	74 ⁰ 43'41.6"E
Altitude (m)	543
Name of landrace/ farmers variety or seedling	Nandagara / Farmers' variety
Local vernacular name(s)	Nandagara Appe
Local name meaning(s)	Aromatic Pickle Mango originally derived from Nandagara village
Distinguishing traits used by farmers	
Tree canopy	Oblong shaped; dense foliage
Leaf	About 20 cm long; Oblong shaped with entire margin with pale green colour. Mild aroma
Flower	Yellowish Green
Fruit	About 4.5 cm; Oblong shaped greenish yellow; with mild aroma. Peduncle with reddish tinch.
Main reasons for growing the landrace or seedling	For home consumption as well as commercial purposes.
Quality traits	Thick fruit skin and longer shelf life. Spec-less bright fruit skin colour even after preservation.
Market traits	Fruits with very small and even sized fruits with greenish yellow.
Main use of plant	Whole Fruit Mango Pickle type (Appe Type)
Horticultural traits	Regular bearer. Comes even in drier areas.
Comments	Fetches good market value.

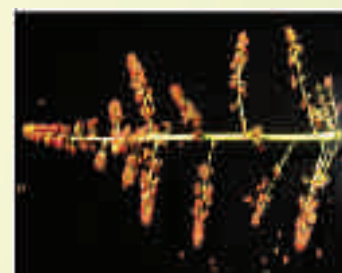




ANANTHABHATTA	
Farmers Name	Eshanna
Country/Site/community	India/ Sirsi / Amchimane
Latitude	14 ⁰ 40'8.3" N
Longitude	74 ⁰ 45'52.6"E
Altitude (m)	550
Name of landrace/ farmers variety or seedling	Ananthbhatta / Farmers' variety
Local vernacular name(s)	Ananthabhatta Appe
Local name meaning(s)	Aromatic Pickle Mango named after a farmers' by name: Ananthabhatta
Distinguishing traits used by farmers	
Tree canopy	Oblong shaped with sparse foliage
Leaf	About 19 cm long; Oblong shaped with entire margin and pale green colour. Strong aromatic.
Flower	Green in colour
Fruit	About 7 cm long; oblong shaped; Green colour, strongly aromatic with typical Cumin odour
Main reasons for growing the landrace or seedling	For home consumption as well as commercial purposes. Even the leaves have strong acceptable aroma.
Quality traits	Strongly aromatic,.Fruit pulp remains white and firm even after one year of preservation.
Market traits	In terms of aroma it is the top variety. Generally used to improve the aroma of other varieties in pickling. Fetches good price.
Main use of plant	Whole Fruit Mango Pickle type (Appe Type)
Horticultural traits	Poor bearer.
Comments	Extremely erratic bearing behaviour. More than 90% of the trees do not bear even after 20 years.

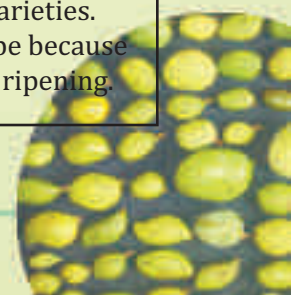


PURAPPE MANE	
Farmers Name	Dattatreya Hegde
Country/Site/community	India/ Sirsi / Salkani
Latitude	14 ⁰ 39'27.6" N
Longitude	74 ⁰ 43'41.6"E
Altitude (m)	543
Name of landrace/ farmers variety or seedling	Purappe Mane / Farmers variety
Local vernacular name(s)	Purappe mane Appe
Local name meaning(s)	Aromatic Pickle Mango derived from Purappe Mane village in Sagar Taluk of Shimoga district
Distinguishing traits used by farmers	
Tree canopy	Semi circular with intermediate dense foliage
Leaf	About 17 cm long; Oblong shaped with wavy margin and dark green colour. Mild aroma.
Flower	Reddish colour is charecteristic identification mark.
Fruit	About 5 cm length; roundish shaped and green colour. Mildly aromatic
Main reasons for growing the landrace or seedling	For home consumption as well as commercial purposes.
Quality traits	Can be used as both cut pickle type and whole pickle type.
Market traits	Mature, un ripen fruits are also used for cut – pickle making
Main use of plant	Whole Fruit Mango Pickle type (Appe Type)
Horticultural traits	Regular bearer
Comments	Poor fruit colour makes it less appealing. Grows even in drier areas.





KADIGAI	
Farmers Name	Dattatreya Hegde
Country/Site/community	India/ Sirsi / Salkani
Latitude	14 ⁰ 39'27.6" N
Longitude	74 ⁰ 43'41.6"E
Altitude (m)	543
Name of landrace/ farmers variety or seedling	Kadagai / Farmers' variety
Local vernacular name(s)	Kadigai Pickle Variety
Local name meaning(s)	Used as a cut pickle mango (not the whole fruit pickle)
Distinguishing traits used by farmers	
Tree canopy	Semicircular shaped with intermediate dense foliage
Leaf	About 25 cm long; Oblong shaped with wavy margin and dark green colour. Mild aroma
Flower	Dark Green
Fruit	About 10 cm long; roundish dark green colour, mildly aromatic
Main reasons for growing the landrace or seedling	For home consumption as well as commercial purposes.
Quality traits	Fruit skin colour is dark green and with smooth surface texture, fruit surface is waxy. Mild aroma and good size of the mature fruit makes it good for whole fruit as well as cut-pickle types.
Market traits:	
Main use of plant	Cut pickle type
Horticultural traits	Regular bearer
Comments	Preferred because of the less number of cut pickle varieties. Can be used as fruit type because it tastes sweetish after ripening.



SIRSI

KAROLLA	
Farmers Name	Dattatreya Hegde
Country/Site/community	India/ Sirsi / Salkani
Latitude	14 ⁰ 39'27.6" N
Longitude	74 ⁰ 43'41.6"E
Altitude (m)	543
Name of landrace/ farmers variety or seedling	Karolla / Seedling type
Local vernacular name(s)	Karolla Pickle Variety
Local name meaning(s)	Used as a cut pickle mango (not the whole fruit pickle)
Distinguishing traits used by farmers	
Tree canopy	Semi circular shaped with sparsely dense foliage
Leaf	About 21 cm long, Oblong with wavy margin and green colour. No leaf aroma
Flower	Yellowish green
Fruit	About 9 cm long; roundish shape; mildly aromatic
Main reasons for growing the landrace or seedling	For home consumption as well as commercial purposes.
Quality traits	Fruit shows waxy-type of surface. Pulp is juicy in nature with mild aroma. Shelf life of one year.
Market traits	It is mainly preferred for pickling where the fruit is sliced into pieces and used for pickling.
Main use of plant	Cut pickle type
Horticultural traits	Regular bearer
Comments	Seedling type derived from a mother tree from Maharashtra.



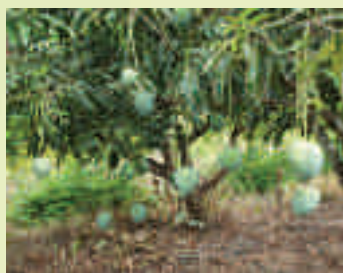


MUDAGAR KOSAGAI	
Farmers Name	Dattatreya Hegde
Country/Site/community	India/ Sirsi / Salkani
Latitude	14 ⁰ 39'27.6" N
Longitude	74 ⁰ 43'41.6"E
Altitude (m)	543
Name of landrace/ farmers variety or seedling	Mudagar / Farmers variety
Local vernacular name(s)	Mudagar Kosagai
Local name meaning(s)	Cut pickle mango derived from Mudagar village
Distinguishing traits used by farmers	
Tree canopy	Semi-circular shaped with dense foliage
Leaf	About 18 cm long; Oblong shaped with entire margin, green colour. Strong aromatic. Small leaves.
Flower	Yellowish Green
Fruit	About 6.5 cm long, roundish shaped with green colour; mildly aromatic
Main reasons for growing the landrace or seedling	For home consumption as well as commercial purposes.
Quality traits	Higher fruit set, multiple uses.
Market traits	It is mainly used for cut- piece pickle making purposes.
Main use of plant	Cut Pickle Mango Variety
Horticultural traits	Regular bearer
Comments	Can be used for making other dishes even after ripening.

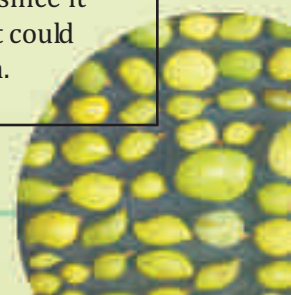


GADEHALLI KUCHAGAI	
Farmers Name	Dattatreya Hegde
Country/Site/community	India/ Sirsi / Salkani
Latitude	14 ⁰ 39'27.6" N
Longitude	74 ⁰ 43'41.6"E
Altitude (m)	543
Name of landrace/ farmers variety or seedling	Gadehalli kuchagai / Farmers' variety
Local vernacular name(s)	Gadehalli kuchagai
Local name meaning(s)	Cut pickle mango derived from Gadehalli village
Distinguishing traits used by farmers	
Tree canopy	Oblong shaped with dense foliage
Leaf	About 20 cm long; Oblong shaped with wavy margin, green colour. No aroma.
Flower	Light green colour
Fruit	About 6.5 cm long; Roundish with greenish yellow colour, mildly aromatic . Highly waxy surface.
Main reasons for growing the landrace or seedling	For home consumption as well as commercial purposes.
Quality traits	Fruit skin is smooth, shining and smooth texture. Mildly aromatic with sour taste. Shelf life is one year.
Market traits	Mature, un ripen fruits are used for pickling
Main use of plant	Mainly used for pickling purposes where the fruit is sliced into pieces.
Horticultural traits	Regular bearer
Comments	Moderate market value





VARATE GIDUGA	
Farmers Name	Dattatreya Hegde
Country/Site/community	India/ Sirsi / Salkani
Latitude	14 ⁰ 39'27.6" N
Longitude	74 ⁰ 43'41.6"E
Altitude (m)	543
Name of landrace/ farmers variety or seedling	Varate Giduga / Farmers variety
Local vernacular name(s)	Varate Giduga
Local name meaning(s)	Seed derived from 'Giduga' variety
Distinguishing traits used by farmers	
Tree canopy	Semi circular shaped with dense foliage
Leaf	About 25 cm long; Dark green colour with wavy margin
Flower	Light green colour
Fruit	Large sized, rough skinned, late maturing type, rather irregular shaped
Main reasons for growing the landrace or seedling	Best fruit variety
Quality traits	Deep Pulp, Yellowish colour, Good Aroma, can be eaten as ice cream, highly sweetish.
Market traits	Large sized, late variety with very good taste
Main use of plant	Commercial
Horticultural traits	Regular bearer
Comments	Good market value. It is known as "ice-cream mango" since it has deep firm pulp that could be eaten like an ice cream.



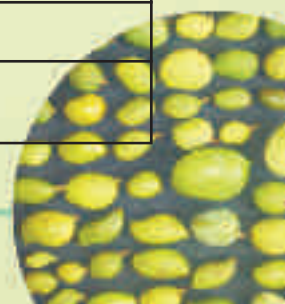
AMRAVATI

Longitude	78°09'10.3"
Botanical Name	<i>Citrus reticulata</i>
Latitude	21° 26' 55.4"
Family	Rutaceae
Altitude (m)	436
IC Number	596031
Code Name	Amravati Citrus -1
District	Amravati
Farmer's name	Ramesh P. Jichkar
State	Maharashtra
VillageName	Nagziri, Tah. Warud
Type of embryo	Polyembryony
Local Name	Nagpuri santra, Nagpur mandarin
Farmers descriptors	Loose skin mandarin, orange colour fruit, easy to peel, small leaves, spreading plant habit.
Fruit Characteristics	
Fruit weight (g)	136
Peel Thickness (cm)	0.32
Fruit length (cm)	6.44
Acidity (%)	0.72
Fruit width (cm)	7.29
TSS (°Brix)	10.5%
Number of Seed/fruit	13.2
Juice (%)	46.25
Number of Segments	10.00
Skin Color	Orange
Petiole wings	Absent
TSS/Acidity Ratio	14.58
Productivity	Good yielder
Eating Quality	Very Good





Longitude	078° 08' 02.2"
Botanical Name	<i>Citrus aurantifolia</i>
Latitude	21° 26' 17.8"
Family	Rutaceae
Altitude (m)	417
IC Number	596032
Code Name	Amravati Citrus -2
District	Amravati
Farmer's name	Rajendra Karale
State	Maharashtra
VillageName	Bargaon, Tah. Warud
Type of embryo	Polyembryony
Local Name	Limboo, Kagzi limboo
Farmers descriptors	Bushy type plant full of thorn, small light yellow fruit, winged petiole, tight skin fruit, very sour fruit
Fruit Characteristics	
Fruit weight (g)	44
Peel Thickness (mm)	1.36
Fruit length (cm)	4.5
Acidity (%)	7.2
Fruit width (cm)	4.12
TSS (°Brix)	7.5%
Number of Seed/fruit	8.2
Juice (%)	46.20
Number of Segments	10.5
Skin Color	Yellow
Petiole wings	Present
TSS/Acidity Ratio	1.04
Productivity	Good yielder
Eating Quality	Very Good



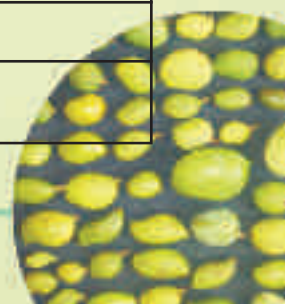
AMRAVATI

Longitude	078° 09' 10.3''
Botanical Name	<i>Citrus aurantifolia</i>
Latitude	21° 26' 55.4''
Family	Rutaceae
Altitude (m)	436
IC Number	596033
Code Name	Amravati Citrus -3
District	Amravati
Farmer's name	Ramesh P. Jichkar
State	Maharashtra
VillageName	Nagziri, Tah. Warud
Type of embryo	Polyembryony
Local Name	Limboo, Kagzi limboo
Farmers descriptors	Bushy type plant full of thorn, small light yellow fruit, winged petiole, tight skin fruit, very sour fruit
Fruit Characteristics	
Fruit weight (g)	42
Peel Thickness (cm)	0.14
Fruit length (cm)	3.92
Acidity (%)	7.5
Fruit width (cm)	4.12
TSS (°Brix)	7.8%
Number of Seed/fruit	11.2
Juice (%)	44.20
Number of Segments	10.00
Skin Color	Yellow
Petiole wings	Present
TSS/Acidity Ratio	1.04
Productivity	Good yielder
Eating Quality	Very Good





Longitude	078° 16' 27.1"
Botanical Name	<i>Citrus limon</i>
Latitude	21° 28' 27"
Family	Rutaceae
Altitude (m)	418
IC Number	596034
Code Name	Amravati Citrus -4
District	Amravati
Farmer's name	Upendra Wankhade
State	Maharashtra
VillageName	Tah. Warud
Type of embryo	Polyembryony
Local Name	Lemon
Farmers descriptors	Cluster bearing fruit habit, bigger leaf size, throughout year flowering and fruiting, very juicy seedless fruit
Fruit Characteristics	
Fruit weight (g)	93
Peel Thickness (cm)	0.13
Fruit length (cm)	6.06
Acidity (%)	7.23
Fruit width (cm)	5.53
TSS (°Brix)	7.6 %
Number of Seed/fruit	13.2
Juice (%)	47.86
Number of Segments	10.85
Skin Color	Green light yellow
Petiole wings	Absent
TSS/Acidity Ratio	1.05
Productivity	High yielder
Eating Quality	Very Good



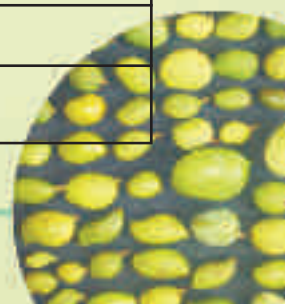
AMRAVATI

Longitude	078° 09' 10.3"
Botanical Name	<i>Citrus sinensis</i>
Latitude	21° 26' 55.4"
Family	Rutaceae
Altitude (m)	436
IC Number	596035
Code Name	Amravati Citrus -5
District	Amravati
Farmer's name	Ramesh P. Jichkar
State	Maharashtra
VillageName	Nagziri, Tah. Warud
Type of embryo	Polyembryony
Local Name	Mosambi
Farmers descriptors	Tight skin fruit, difficult to peel out, spreading plant habit, colour less sweet juice, bigger size leaves
Fruit Characteristics	
Fruit weight (g)	182
Peel Thickness (cm)	0.42
Fruit length (cm)	6.9
Acidity (%)	0.32
Fruit width (cm)	7.3
TSS (°Brix)	9.8%
Number of Seed/fruit	17.5
Juice (%)	44.20
Number of Segments	10.20
Skin Color	Yellow
Petiole wings	Absent
TSS/Acidity Ratio	30.62
Productivity	Good yielder
Eating Quality	Very Good





Longitude	078° 08' 02.2''
Botanical Name	<i>Citrus sinensis</i>
Latitude	21° 26' 17.8''
Family	Rutaceae
Altitude (m)	417
IC Number	596036
Code Name	Amravati Citrus -6
District	Amravati
Farmer's name	Rajendra Karale
State	Maharashtra
VillageName	Bargaon, Tah. Warud
Type of embryo	Polyembryony
Local Name	Mosambi
Farmers descriptors	Tight skin fruit, difficult to peel out, spreading plant habit, colour less sweet juice
Fruit Characteristics	
Fruit weight (g)	178
Peel Thickness (cm)	0.40
Fruit length (cm)	6.5
Acidity (%)	0.34
Fruit width (cm)	7.0
TSS (°Brix)	10.0%
Number of Seed/fruit	15.8
Juice (%)	47.20
Number of Segments	10.00
Skin Color	Green Yellow
Petiole wings	Absent
TSS/Acidity Ratio	29.41
Productivity	Good yielder
Eating Quality	Very Good



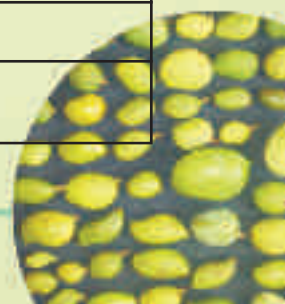
AMRAVATI

Longitude	078° 08' 00.6''
Botanical Name	<i>Citrus limonia</i>
Latitude	21° 26' 18.9''
Family	Rutaceae
Altitude (m)	416
IC Number	596037
Code Name	Amravati Citrus - 7
District	Amravati
Farmer's name	Vasantrao wankhade
State	Maharashtra
VillageName	Bargaon, Tah. Warud
Type of embryo	Polyembryony
Local Name	Rangpur lime
Farmers descriptors	Spreading plant growth, Red colour medium size fruit, look like mandarin but sour
Fruit Characteristics	
Fruit weight (g)	98
Peel Thickness (cm)	0.28
Fruit length (cm)	5.70
Acidity (%)	3.52
Fruit width (cm)	5.8
TSS (°Brix)	7.9%
Number of Seed/fruit	9.2
Juice (%)	36.50
Number of Segments	9.8
Skin Color	Red Orange
Petiole wings	Absent
TSS/Acidity Ratio	2.24
Productivity	High yielder
Eating Quality	Used as rootstock



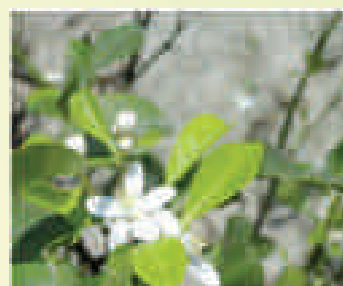


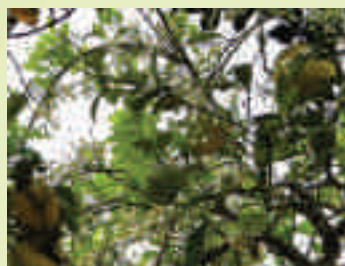
Longitude	078° 09' 10.3"
Botanical Name	<i>Citrus jambheri</i>
Latitude	21° 26' 55.4"
Family	Rutaceae
Altitude (m)	436
IC Number	596038
Code Name	Amravati Citrus - 8
District	Amravati
Farmer's name	Ramesh P. Jichkar
State	Maharashtra
VillageName	Nagziri, Tah. Warud
Type of embryo	Polyoembryony
Local Name	Idlimboo, Rough lemon
Farmers descriptors	Bigger size plant, rough surface fruit, oblong shape, very sour taste used as rootstock for Nagpur mandarin
Fruit Characteristics	
Fruit weight (g)	186
Peel Thickness (cm)	0.50
Fruit length (cm)	7.9
Acidity (%)	4.01
Fruit width (cm)	7.1
TSS (°Brix)	8.5%
Number of Seed/fruit	11.0
Juice (%)	26.20
Number of Segments	10.00
Skin Color	Green Yellow
Petiole wings	Absent
TSS/Acidity Ratio	2.07
Productivity	Good yielder
Eating Quality	Used as rootstock



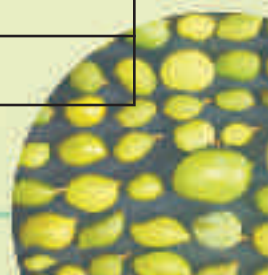
PUSA

Longitude	N 25 ⁰ 57'55.0"
Botanical Name	<i>Citrus grandis</i>
Latitude	E 085 ⁰ 39'0.18"
Family	Rutaceae
Altitude (m)	36m
Code Name	Pusa pummelo -1
District	Samastipur
Farmer's name	Ram Kumar Rai
State	Bihar
Village Name	Narayanpur, Pusa
Type of embryo	Monoembryony
Local Name	Gagar Nimbu
Farmers descriptors	Spreading plant habit, Round fruited, Red fleshed, medium sized, yellow coloured fruit, early maturing, fragrant flowers.
Fruit Characteristics	
Fruit weight (kg)	0.979
Peel Thickness (cm)	1.55
Fruit length (cm)	12.00
Flesh colour	Red
Acidity (%)	0.800
Fruit width (cm)	13.05
TSS (°Brix)	11.10
100 Seed weight (g)	46.995
Number of Seed/fruit	78.00
Fruit length:Breadth	0.92
Nature of segments	Hard
Number of Segments	14.00
Petiole wings	Present
TSS/Acidity Ratio	20.53
Productivity	Good yielder
Eating Quality	Excellent



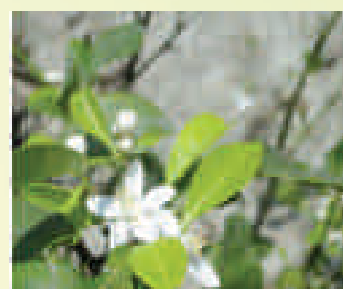
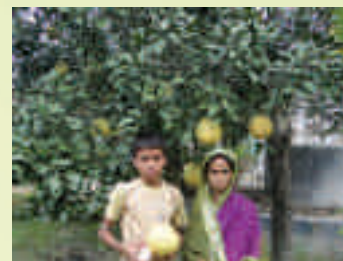


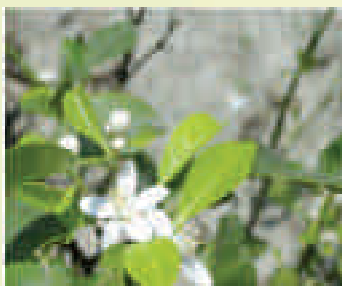
Longitude	N25°56'47.6"
Botanical Name	<i>Citrus grandis</i>
Latitude	E85°38'44.8"
Family	Rutaceae
Altitude (m)	39m
Code Name	Pusa pummelo -2
District	Samastipur
Farmer's name	Jagdish Dass
State	Bihar
Village Name	Narayanpur, Pusa
Type of embryo	Monoembryony
Local Name	Gagar Nimbu
Farmers descriptors	Spreading plant habit, Round fruited, Red fleshed, large sized, yellow coloured fruit.
Fruit Characteristics	
Fruit weight (kg)	1.613
Peel Thickness (cm)	1.20
Fruit length (cm)	16.35
Flesh colour	Red
Acidity (%)	0.704
Fruit width (cm)	17.65
TSS (°Brix)	12.65
100 Seed weight (g)	51.09
Number of Seed/fruit	152.50
Fruit length : Breadth	0.92
Nature of segments	Hard
Number of Segments	14.00
Petiole wings	Present
TSS/Acidity Ratio	17.97
Productivity	Good yielder
Eating Quality	Very Good



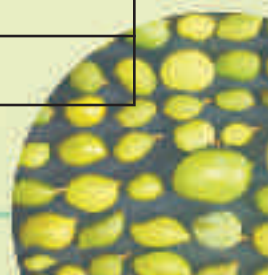
PUSA

Longitude	N 26°00'03.8"
Botanical Name	<i>Citrus grandis</i>
Latitude	E 85°41'30.0"
Family	Rutaceae
Altitude (m)	28m
Code Name	Pusa pummelo -3
District	Samastipur
Farmer's name	Upender Thakur
State	Bihar
Village Name	Malinagar, Pusa
Type of embryo	Monoembryony
Local Name	Gagar Nimbu
Farmers descriptors	Spreading plant habit, Round fruited, Red fleshed, large sized, yellow coloured fruit.
Fruit Characteristics	
Fruit weight (kg)	1.215
Peel Thickness (cm)	1.85
Fruit length (cm)	14.75
Flesh colour	Dark
Acidity (%)	0.536
Fruit width (cm)	14.75
TSS (°Brix)	12.30
100 Seed weight (g)	41.77
Number of Seed/fruit	81.50
Fruit length : Breadth:	1.00
Nature of segments	Soft
Number of Segments	13.50
Petiole wings	Present
TSS/Acidity Ratio	22.95
Productivity	Good yielder
Eating Quality	Very Good



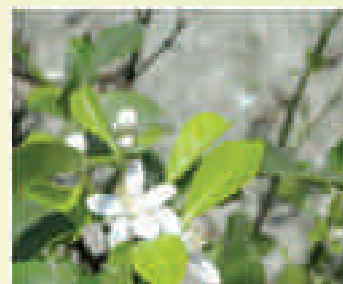


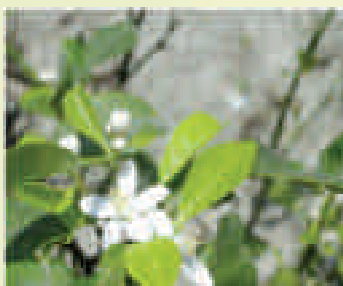
Longitude	N25°59'33.2"
Botanical Name	<i>Citrus grandis</i>
Latitude	E85°38'46.1"
Family	Rutaceae
Altitude (m)	31m
Code Name	Pusa pummelo -4
District	Samastipur
Farmer's name	Kamal Rai
State	Bihar
Village Name	Mahmada, Pusa
Type of embryo	Monoembryony
Local Name	Gagar Nimbu
Farmers descriptors	Spreading plant habit, Flattened fruits, Red fleshed, large sized, yellow coloured fruit.
Fruit Characteristics	
Fruit weight (kg)	1.332
Peel Thickness (cm)	1.75
Fruit length (cm)	14.50
Flesh colour	Dark Red
Acidity (%)	0.576
Fruit width (cm)	16.25
TSS (°Brix)	12.15
100 Seed weight (g)	42.57
Number of Seed/fruit	94.00
Fruit length : Breadth	0.89
Nature of segments	Soft
Number of Segments	17.50
Petiole wings	Present
TSS/Acidity Ratio	22.95
Productivity	Good yielder
Eating Quality	Very Good



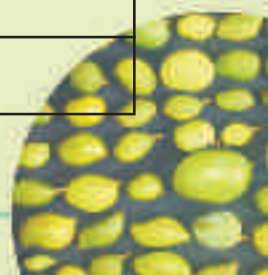
PUSA

Longitude	N26°04'00.6"
Botanical Name	<i>Citrus grandis</i>
Latitude	E85°36'52.8"
Family	Rutaceae
Altitude (m)	40m
Code Name	Pusa pummelo -5
District	Samastipur
Farmer's name	Mohammed Ishaque
State	Bihar
Village Name	Govindpur Chhapra, Kalyanpur
Type of embryo	Monoembryony
Local Name	Gagar Nimbu
Farmers descriptors	Spreading plant habit, profuse bearing, Fruit somewhat elongated, Thin skinned, Red fleshed, medium sized, Dark yellow coloured fruit.
Fruit Characteristics	
Fruit weight (kg)	1.048
Peel Thickness (cm)	0.90
Fruit length (cm)	14.95
Flesh colour	Dark Red
Acidity (%)	0.488
Fruit width (cm)	14.50
TSS (°Brix)	11.95
100 Seed weight (g)	29.80
Number of Seed/fruit	80.50
Fruit length:Breadth	1.03
Nature of segments	Soft
Number of Segments	12.00
Petiole wings	Present
TSS/Acidity Ratio	24.49
Productivity	Good yielder
Eating Quality	Excellent



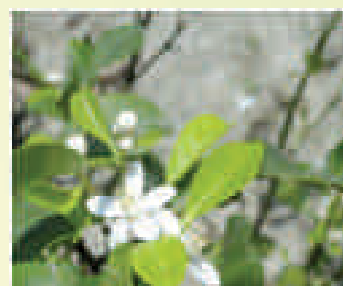


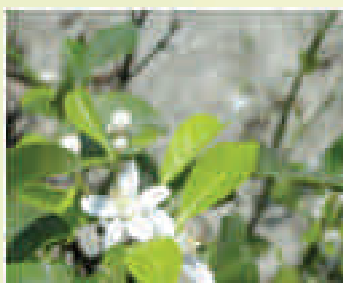
Longitude	N26⁰04'01.3"
Botanical Name	<i>Citrus grandis</i>
Latitude	E85⁰36'52.8"
Family	Rutaceae
Altitude (m)	28m
Code Name	Pusa pummelo -6
District	Samastipur
Farmer's name	Joginder Bhagat Shah
State	Bihar
Village Name	Govindpur Chhapra, Kalyanpur
Type of embryo	Monoembryony
Local Name	Gagar Nimbu
Farmers descriptors	Spreading plant habit, profuse bearing, Flattened fruit, Thick skinned, Red fleshed, Large fruited, Dark yellow and shining fruit.
Fruit Characteristics	
Fruit weight (kg)	0.917
Peel Thickness (cm)	1.05
Fruit length (cm)	11.25
Flesh colour	Red
Acidity (%)	0.448
Fruit width (cm)	15.05
TSS (°Brix)	12.30
100 Seed weight (g)	33.25
Number of Seed/fruit	91.50
Fruit length:Breadth	0.747
Nature of segments	Soft
Number of Segments	15.00
Petiole wings	Present
TSS/Acidity Ratio	27.45
Productivity	Good yielder
Eating Quality	Very Good



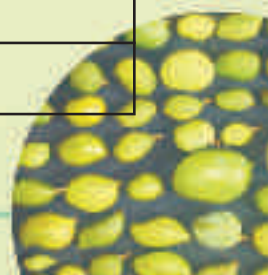
PUSA

Longitude	N25°57'54.0"
Botanical Name	<i>Citrus grandis</i>
Latitude	E85°39'01.6"
Family	Rutaceae
Altitude (m)	37m
Code Name	Pusa pummelo -7
District	Samastipur
Farmer's name	Ramesh Rai
State	Bihar
Village Name	Narayanpur, Pusa
Type of embryo	Monoembryony
Local Name	Gagar Nimbu
Farmers descriptors	Spreading plant habit, profuse bearing, Flattened fruit, Thick skinned, Red fleshed, Large fruited, Dark yellow and shining fruit.
Fruit Characteristics	
Fruit weight (kg)	1.780
Peel Thickness (cm)	1.995
Fruit length (cm)	15.00
Flesh colour	Red
Acidity (%)	0.448
Fruit width (cm)	18.15
TSS (°Brix)	9.20
100 Seed weight (g)	44.25
Number of Seed/fruit	128.00
Fruit length : Breadth	0.825
Nature of segments	Hard
Number of Segments	18.00
Petiole wings	Present
TSS/Acidity Ratio	20.54
Productivity	Good yielder
Eating Quality	Good



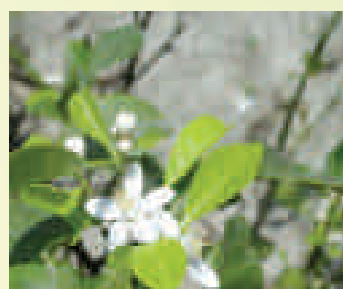


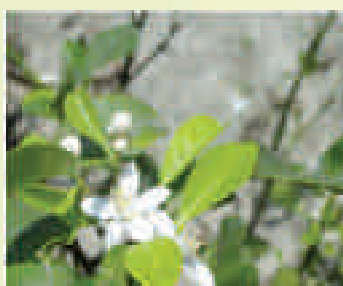
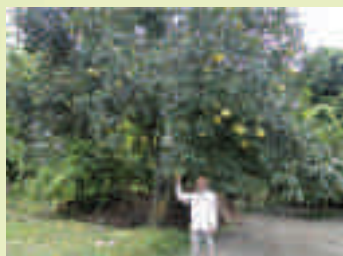
Longitude	N25 ⁰ 59'34.1"
Botanical Name	<i>Citrus grandis</i>
Latitude	E85 ⁰ 38'37.7"
Family	Rutaceae
Altitude (m)	31m
Code Name	Pusa pummelo -8
District	Samastipur
Farmer's name	Arun Kumar Rai
State	Bihar
Village Name	Mahmada, Pusa
Type of embryo	Monoembryony
Local Name	Gagar Nimbu
Farmers descriptors	Spreading plant habit, profuse bearing, Elongated fruits, medium sized, sweet, Thick skinned, Red fleshed, yellow and shining fruit.
Fruit Characteristics	
Fruit weight (kg)	0.991
Peel Thickness (cm)	1.70
Fruit length (cm)	14.15
Flesh colour	Red
Acidity (%)	0.632
Fruit width (cm)	12.85
TSS (°Brix)	11.45
100 Seed weight (g)	41.77
Number of Seed/fruit	70.50
Fruit length : Breadth	1.10
Nature of segments	Soft
Number of Segments	14.50
Petiole wings	Present
TSS/Acidity Ratio	18.12
Productivity	Good yielder
Eating Quality	Very Good



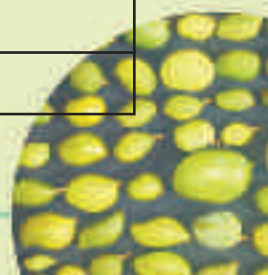
PUSA

Longitude	N26 ⁰ 00'01.4"
Botanical Name	<i>Citrus grandis</i>
Latitude	E85 ⁰ 41'13.1"
Family	Rutaceae
Altitude (m)	29m
Code Name	Pusa pummelo -9
District	Samastipur
Farmer's name	Shankar Baitha
State	Bihar
Village Name	Malinagar, Kalyanpur
Type of embryo	Monoembryony
Local Name	Gagar Nimbu
Farmers descriptors	Spreading plant habit, profuse bearing, Elongated fruit, Thick skinned, pink fleshed, Large fruited, yellow and shining fruit.
Fruit Characteristics	
Fruit weight (kg)	1.367
Peel Thickness (cm)	2.55
Fruit length (cm)	17.00
Flesh colour	Pink
Acidity (%)	0.520
Fruit width (cm)	15.85
TSS (°Brix)	11.10
100 Seed weight (g)	57.52
Number of Seed/fruit	90.50
Fruit length : Breadth	1.07
Nature of segments	Soft
Number of Segments	15.00
Petiole wings	Present
TSS/Acidity Ratio	221.35
Productivity	Good yielder
Eating Quality	Very Good



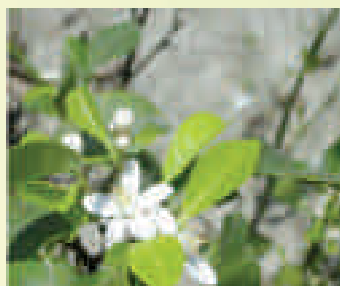


Longitude	N25⁰59'98.4"
Botanical Name	<i>Citrus grandis</i>
Latitude	E85⁰41'10.9"
Family	Rutaceae
Altitude (m)	28m
Code Name	Pusa pummelo -10
District	Samastipur
Farmer's name	Manoj Thakur
State	Bihar
Village Name	Malinagar, Kalyanpur
Type of embryo	Monoembryony
Local Name	Gagar Nimbu
Farmers descriptors	Spreading plant habit, profuse bearing, Round fruit, medium thick skinned, pink fleshed, Large fruit, yellow and shining fruit.
Fruit Characteristics	
Fruit weight (kg)	1.265
Peel Thickness (cm)	2.55
Fruit length (cm)	14.55
Flesh colour	Pink
Acidity (%)	0.584
Fruit width (cm)	14.75
TSS (°Brix)	10.40
100 Seed weight (g)	50.51
Number of Seed/fruit	52.00
Fruit length : Breadth	0.985
Nature of segments	Soft
Number of Segments	16.50
Petiole wings	Present
TSS/Acidity Ratio	17.81
Productivity	Good yielder
Eating Quality	Good



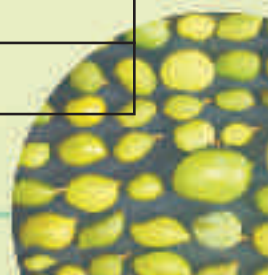
PUSA

Longitude	N25°58'43.2"
Botanical Name	<i>Citrus grandis</i>
Latitude	E85°38'44.2"
Family	Rutaceae
Altitude (m)	27m
Code Name	Pusa pummelo -11
District	Samastipur
Farmer's name	Madan Thakur
State	Bihar
Village Name	Bhuskaul, Pusa
Type of embryo	Monoembryony
Local Name	Gagar Nimbu
Farmers descriptors	Spreading plant habit, profuse bearing, Flattened fruit, Thick skinned, dark red fleshed, medium sized fruit, Dark yellow and shining fruit.
Fruit Characteristics	
Fruit weight (kg)	1.037
Peel Thickness (cm)	1.15
Fruit length (cm)	11.75
Flesh colour	Dark Red
Acidity (%)	0.472
Fruit width (cm)	13.75
TSS (°Brix)	12.50
100 Seed weight (g)	34.48
Number of Seed/fruit	97.00
Fruit length : Breadth	0.85
Nature of segments	Soft
Number of Segments	13.50
Petiole wings	Present
TSS/Acidity Ratio	26.48
Productivity	Good yielder
Eating Quality	Excellent





Longitude	N25⁰59'33.1"
Botanical Name	<i>Citrus grandis</i>
Latitude	85⁰38'45.9"
Family	Rutaceae
Altitude (m)	25m
Code Name	Pusa pummelo -12
District	Samastipur
Farmer's name	Devender Thakur
State	Bihar
Village Name	Malinagar, Kalyanpur
Type of embryo	Monoembryony
Local Name	Gagar Nimbu
Farmers descriptors	Spreading plant habit, profuse bearing, Elongated fruit, Thick skinned, red fleshed, medium sized fruit, Dark yellow and shining fruit.
Fruit Characteristics	
Fruit weight (kg)	0.862
Peel Thickness (cm)	1.55
Fruit length (cm)	13.80
Flesh colour	Red
Acidity (%)	0.624
Fruit width (cm)	13.30
TSS (°Brix)	12.55
100 Seed weight (g)	51.26
Number of Seed/fruit	72.00
Fruit length : Breadth	1.035
Nature of segments	Soft
Number of Segments	13.00
Petiole wings	Present
TSS/Acidity Ratio	20.11
Productivity	Good yielder
Eating Quality	Very Good

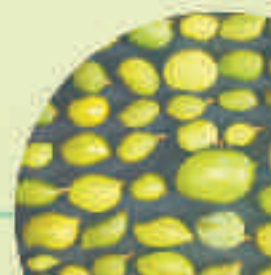


PUSA

Longitude	N25°58'45.6"
Botanical Name	<i>Citrus grandis</i>
Latitude	E85°39'37.6"
Family	Rutaceae
Altitude (m)	32m
Code Name	Pusa pummelo -13
District	Muzaffarpur
Farmer's name	Chandeshwar Pd. Singh
State	Bihar
Village Name	Mehmudpur, Muroul
Type of embryo	Monoembryony
Local Name	Gagar Nimbu
Farmers descriptors	Spreading plant habit, profuse bearing, Flattened fruit, Thick skinned, dark red fleshed, medium sized fruit, yellow and shining fruit.
Fruit Characteristics	
Fruit weight (kg)	1.186
Peel Thickness (cm)	2.65
Fruit length (cm)	16.55
Flesh colour	Dark Red
Acidity (%)	0.480
Fruit width (cm)	17.40
TSS (°Brix)	11.00
100 Seed weight (g)	39.49
Number of Seed/fruit	45.00
Fruit length : Breadth	0.91
Nature of segments	Hard
Number of Segments	13.50
Petiole wings	Present
TSS/Acidity Ratio	22.92
Productivity	Good yielder
Eating Quality	Excellent



BILI MURUGALU (<i>GARCINIA INDICA</i> - YELLOW COLOUR TYPE)	
Farmers Name	Dattatreya Hegde
Country/Site/community	India/ Sirsi / Salkani
Latitude	14 ⁰ 39'27.6" N
Longitude	74 ⁰ 43'41.6" E
Altitude (m)	543
Name of landrace/ farmers variety or seedling	Bili Murugalu
Local vernacular name(s)	Bili Murugalu
Local name meaning(s)	White Garcinia derived from red type <i>Garcinia indica</i>
Distinguishing traits used by farmers	
Tree canopy	Pyramid shape with long drooping canopy
Leaf	Oblong shaped leaves
Flower	Male and Female trees are separate. Yellowish Calyx
Fruit	Pale Yellow to Deep Yellow fruit colour. Roundish shape. Soft Aril. Thin rind. Approximately 35 mm diameter
Main reasons for growing the landrace or seedling	Rare type used for ayurvedic medicines.
Quality traits	Very good for jam making
Market traits	Fetches double the price for dried rinds. The butter derived from seeds of this type also gets premium price in cosmetic industry.
Main use of plant	Extensively used in <i>Ayurveda</i> and folk medicine as a bile suppressant and in the treatment of hyper-acidity.
Horticultural traits	The grafted plants show Plagiotropic growth. White type could be identified only in those tree which bear fruits.
Comments	One of the rare types naturally found in the Western Ghats.





ORANGE TYPE MURUGALU: (<i>Garcinia indica</i> Orange colour type)	
Farmers Name	Dattatreya Hegde
Country/Site/community	India/ Sirsi / Salkani
Latitude	14 ⁰ 39'27.6" N
Longitude	74 ⁰ 43'41.6"E
Altitude (m)	543
Name of landrace/ farmers variety or seedling	Orange type Murugalu-Seedling type
Local vernacular name(s)	Orange - type Murugalu
Local name meaning(s)	Seed derived from common Red type <i>Garcinia indica</i>
Distinguishing traits used by farmers	
Tree canopy	Pyramid shape with long drooping canopy
Leaf	Oblong shaped leaves
Flower	Male and Female trees are separate.
Fruit	Pale Yellow to orange coloured fruit with flattened base. Soft, whitish aril. Thin fruit rind. Approximately 45 mm diameter
Main reasons for growing the landrace or seedling	Rare type.
Quality traits	Good for beverage making
Market traits	NA.
Main use of plant	Beverage making
Horticultural traits	Orange type could be identified only in those tree which bear fruits.
Comments	One of the rare types naturally found in the Western Ghats.

