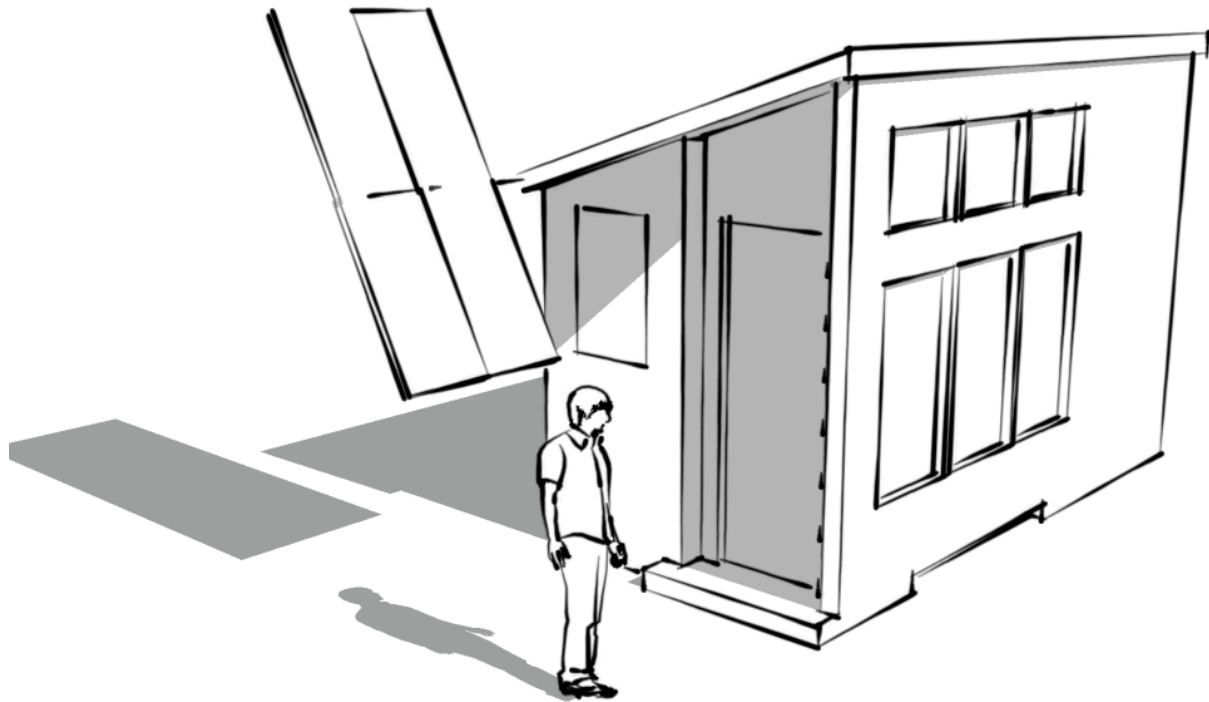


# 8x16 Tiny House Plans

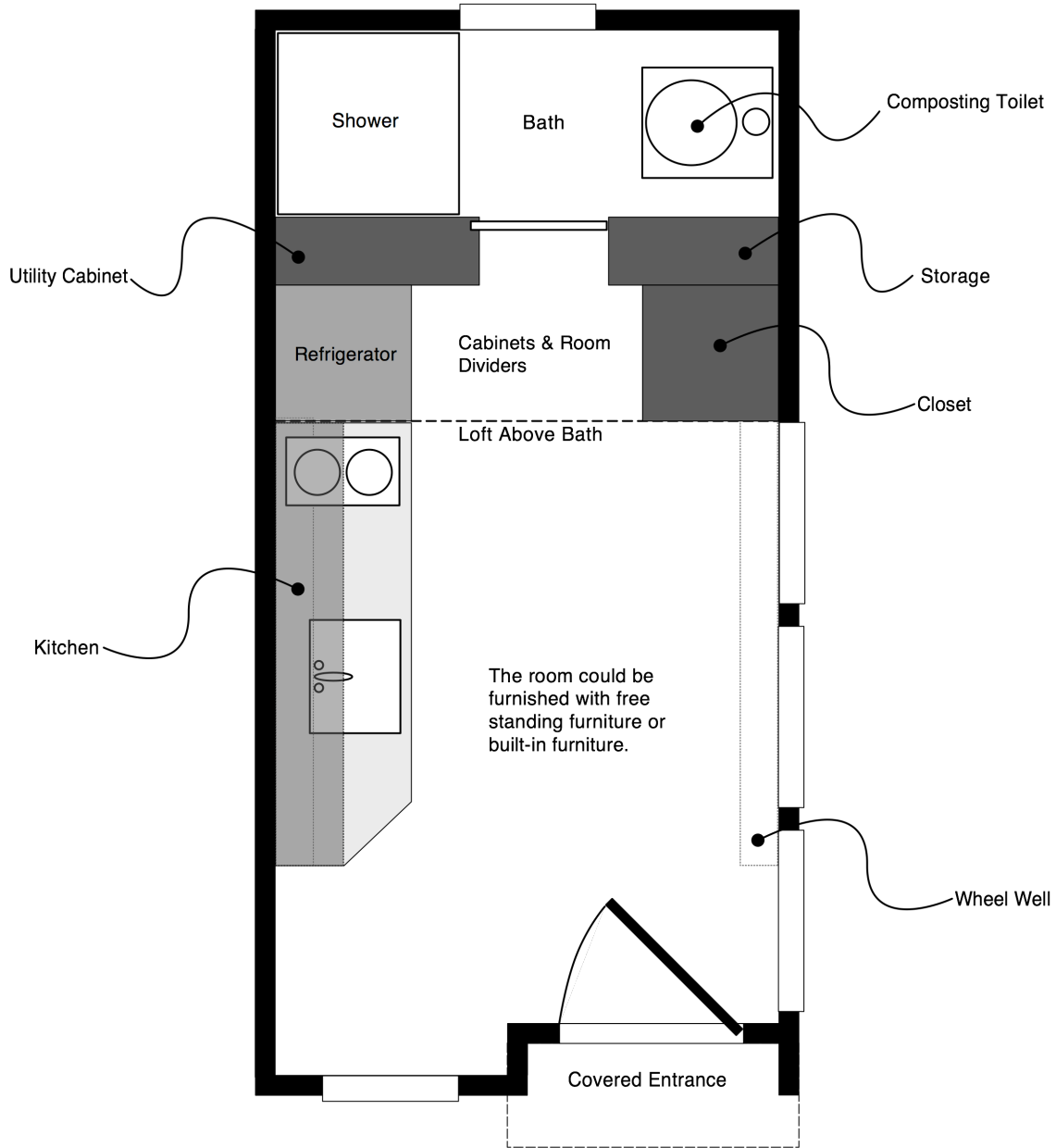
Version 2.0

TinyHouseDesign.com



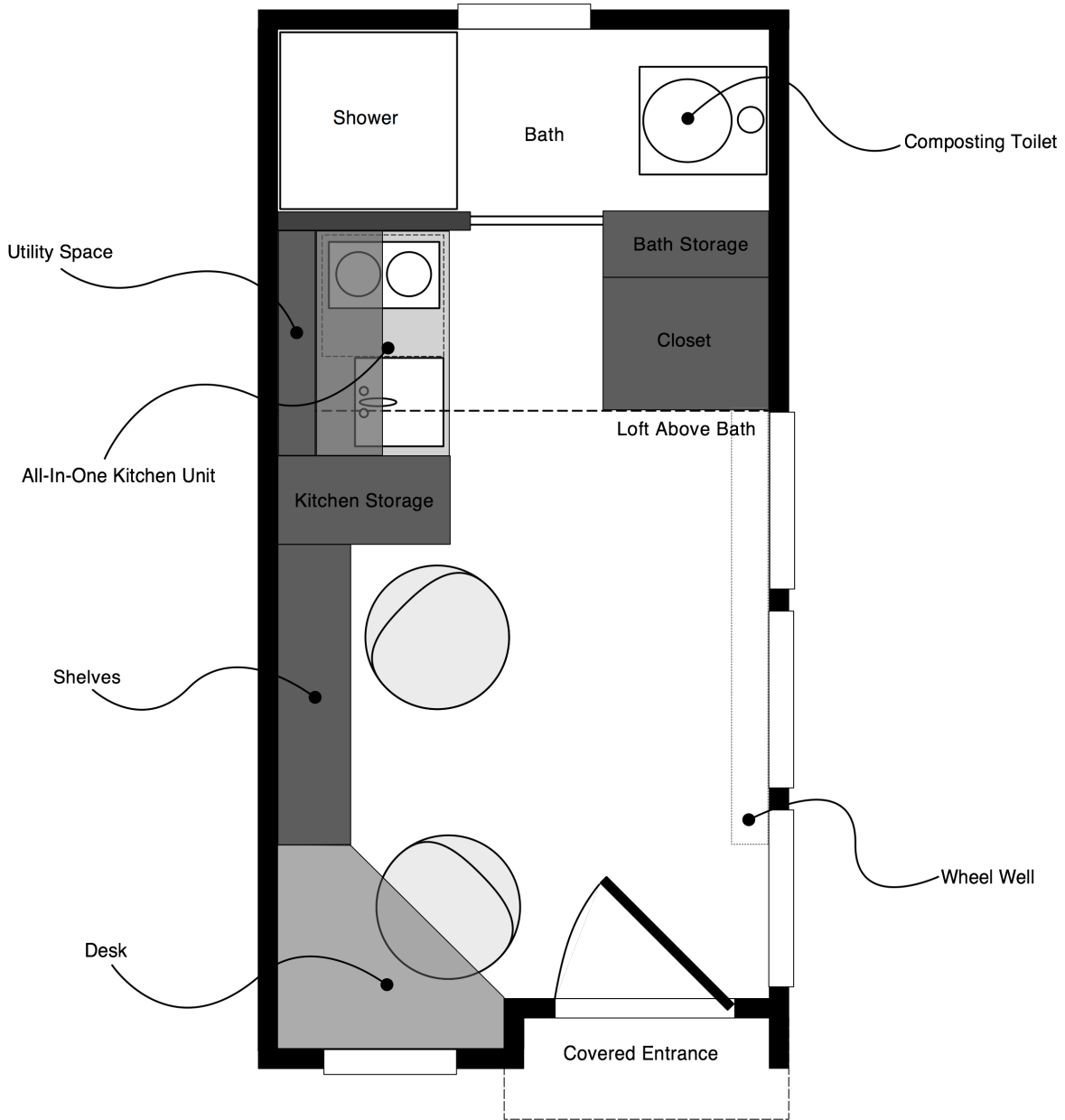
These house plans were not prepared by or checked by a licensed engineer and/or architect. TinyHouseDesign.com does not represent or imply itself to be a licensed engineer and/or a licensed architect. Enjoy these free house plans but use them at your own risk. :-)

House plans licensed under a Creative Commons Attribution-Noncommercial 3.0 United States License  
<http://creativecommons.org/licenses/by-nc/3.0/us/>



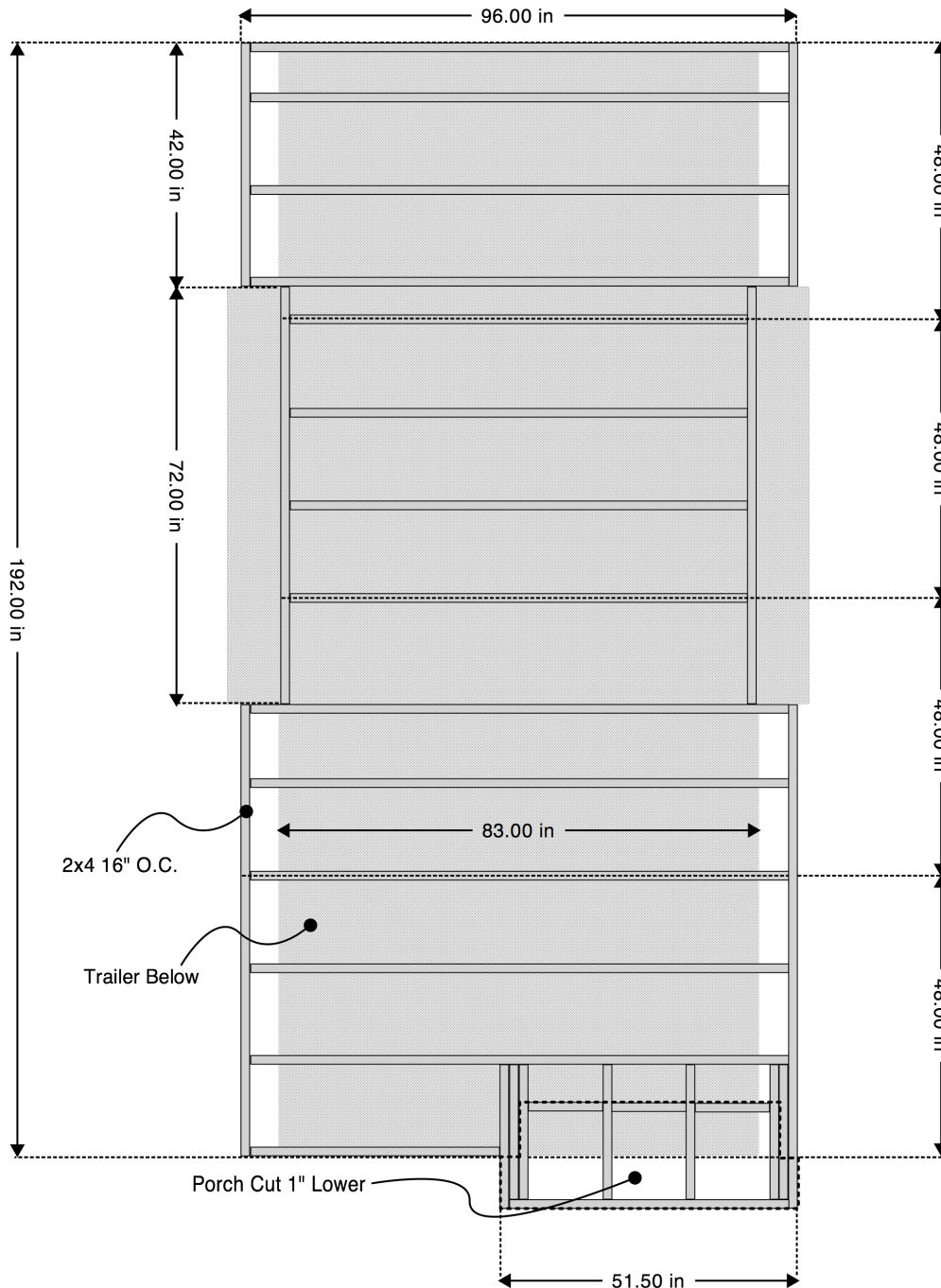
### Floor Plan 1

There are a variety of different floor plan configurations possible with an 8' by 16' house. This is just one of the ways you could design the interior. Notice that the interior walls are really built-in cabinets. The loft is open to the main living area.



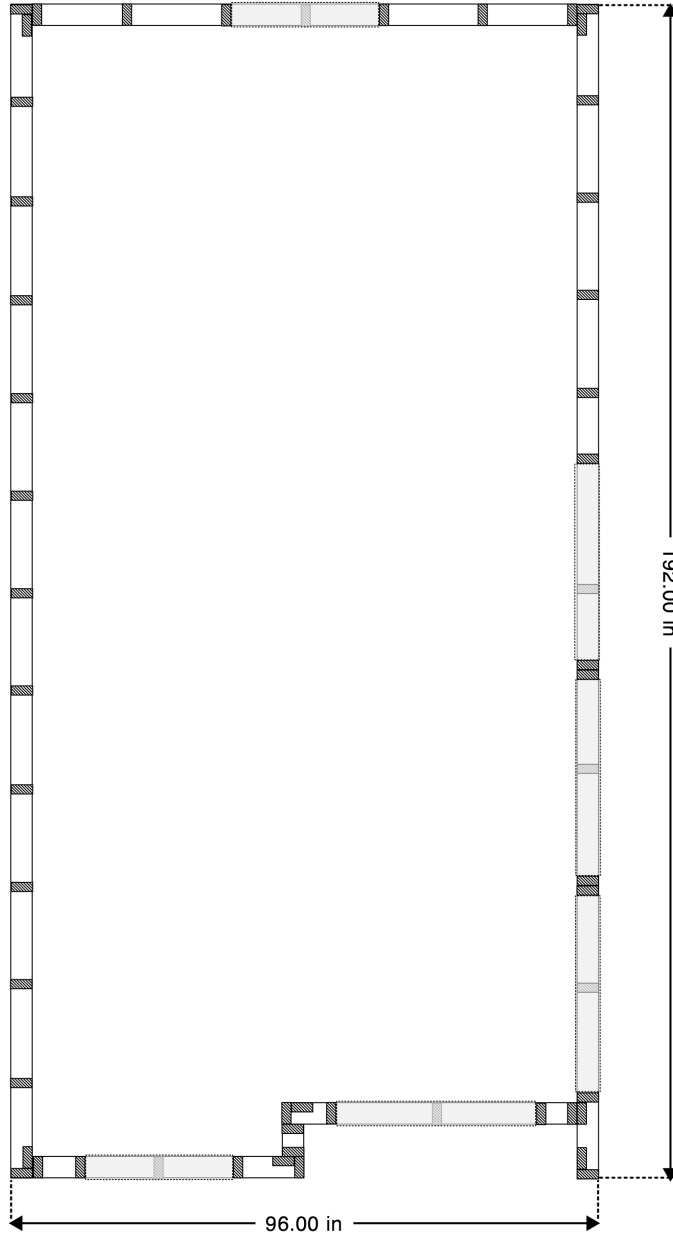
## Floor Plan 2

This configuration uses a small all-in-one commercially built kitchen unit like those made by Avanti, Summit, and Acme. You could also build your own. This design also provides more shelf space and a desk.



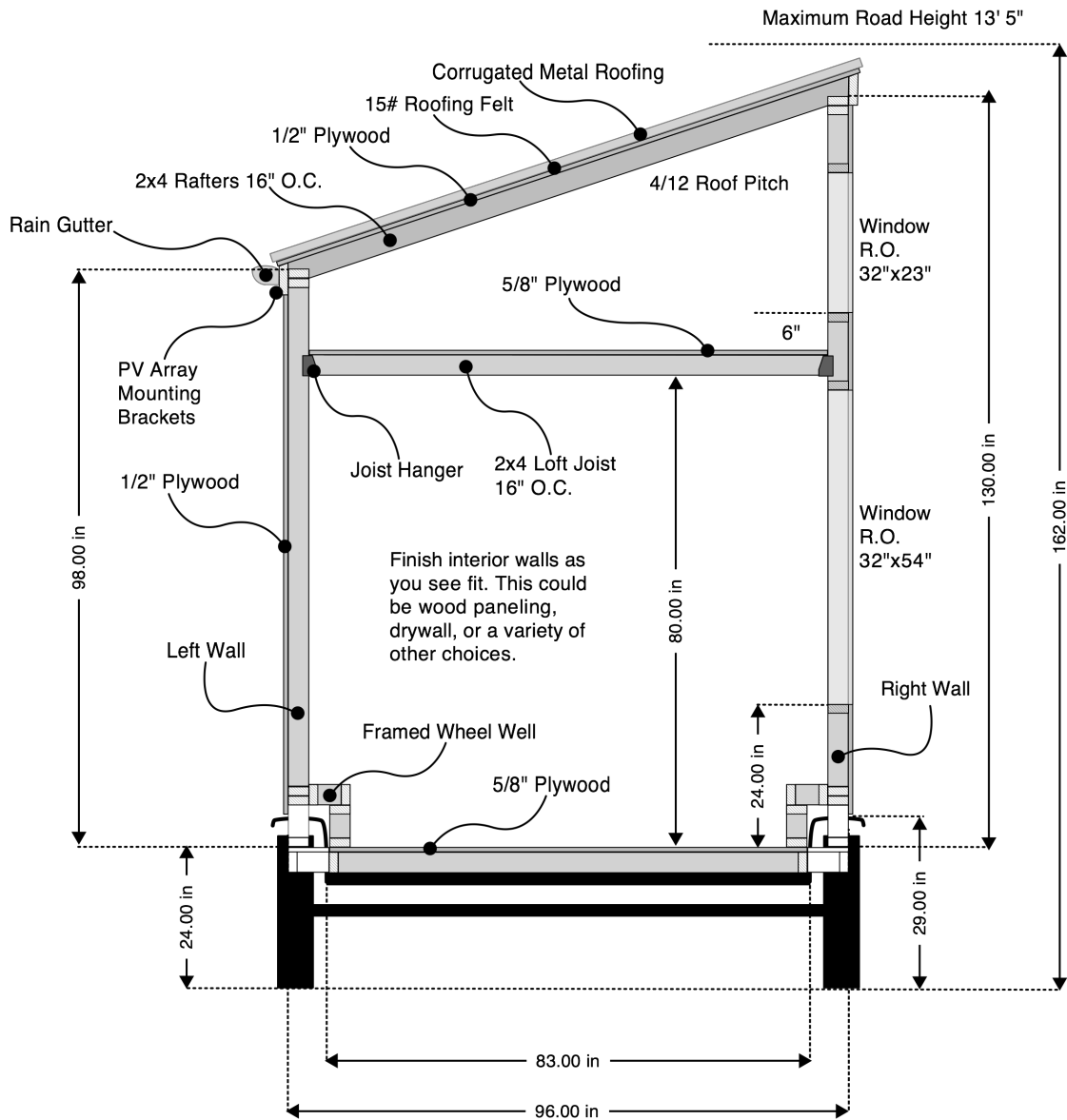
## Floor Framing

This diagram illustrates the floor framing. This is designed to be built on a flatbed dual axle trailer. The measurements for the wheel wells may differ depending on the trailer you use as your foundation. Be especially careful to attach your house to the trailer with bolts and metal strapping. Also be sure to run metal strapping up the exterior side of the studs and secure them to the metal frame of the trailer for added safety.



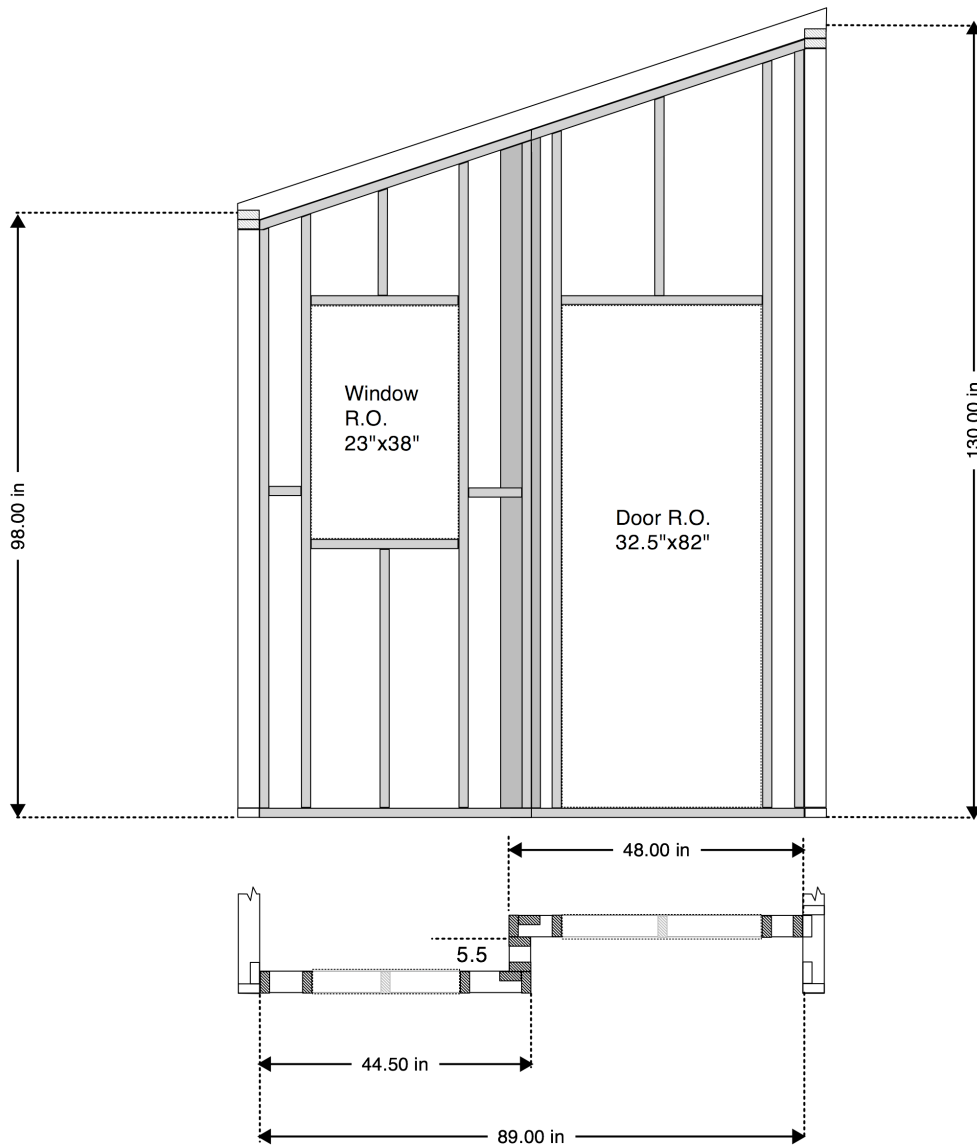
### Wall Framing

This diagram shows the wall framing including window and door openings. You can easily adjust the wall framing for different size windows and door. For more detail see the cross section and wall detail drawings.



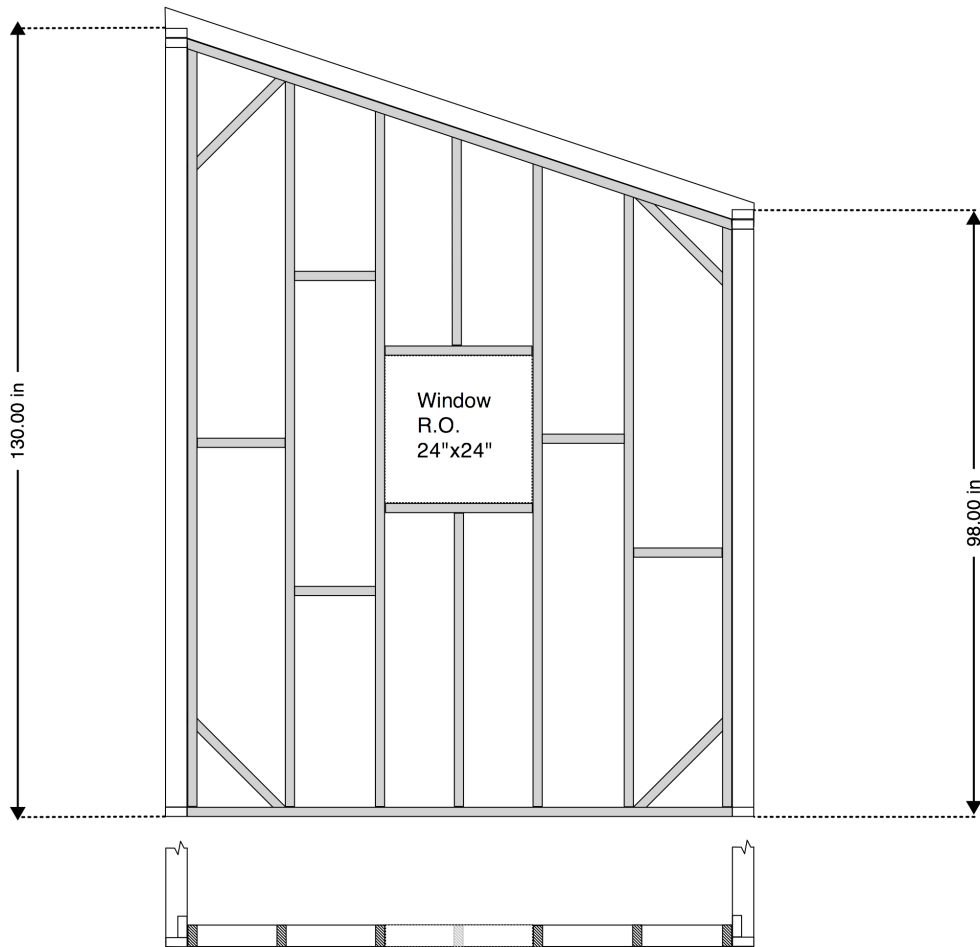
### Cross Section

This is the house cut in half. This diagram shows the wall, floor, and roof framing details. Insulate and finish the walls as you see fit. The more air tight you make your house the less energy it will use.



### Front Wall Framing Plan

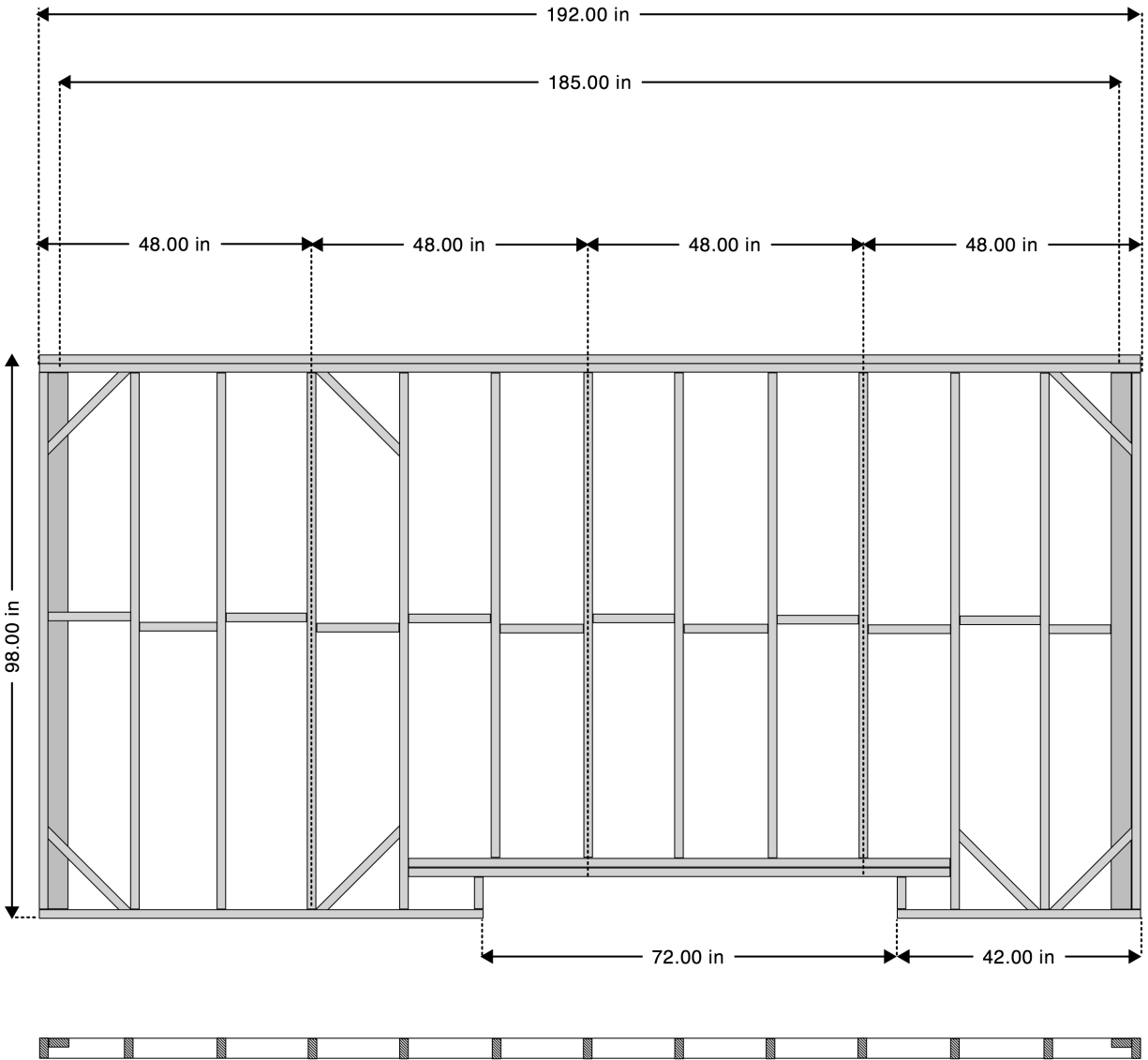
This diagram illustrates how the front wall would be framed. Notice the inset entryway. This allows a little protection from the weather as one enters the house.



### Back Wall Framing Plan

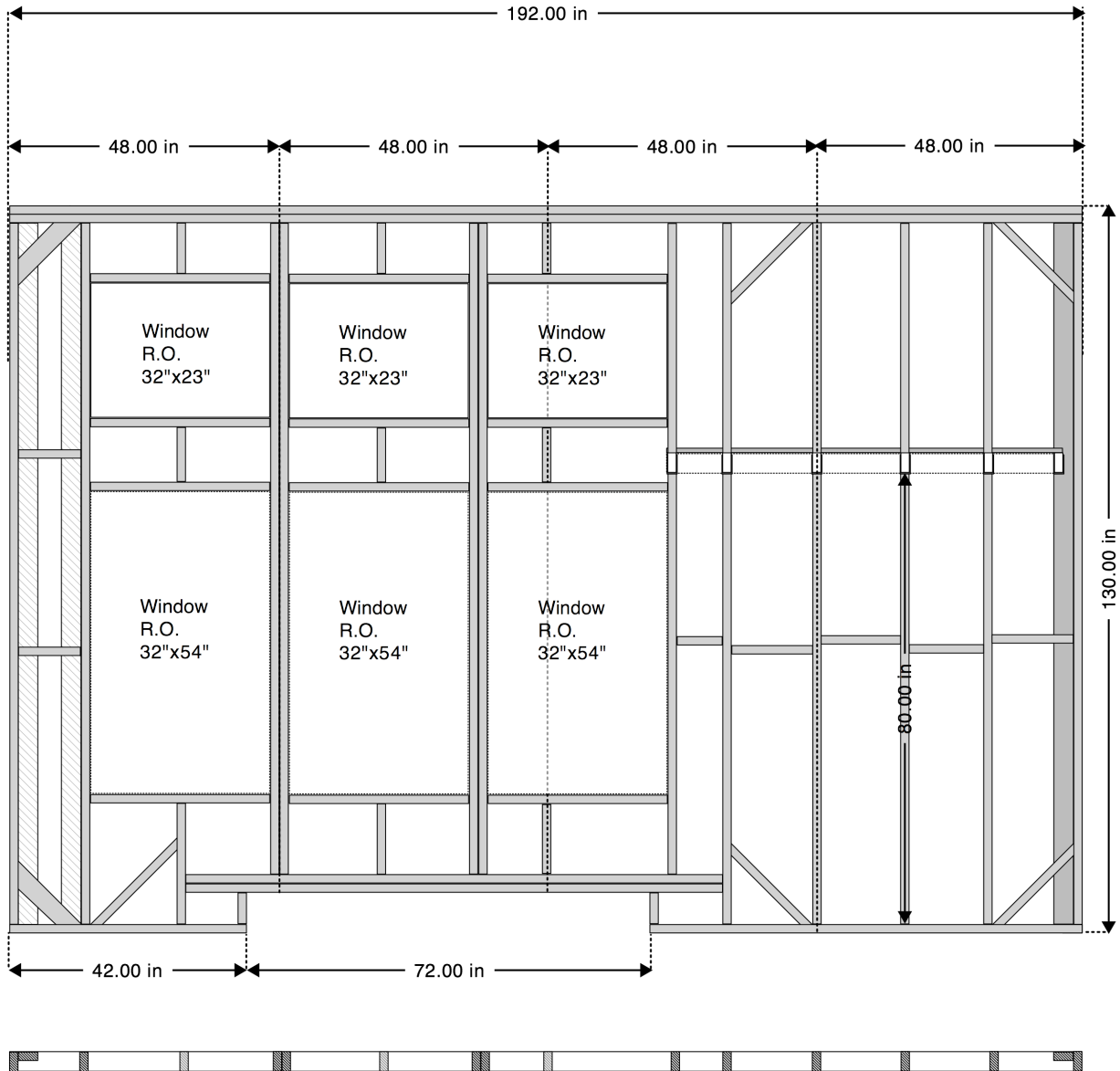
This diagram illustrates the back wall. Be sure the bathroom window is lower than the loft joists.





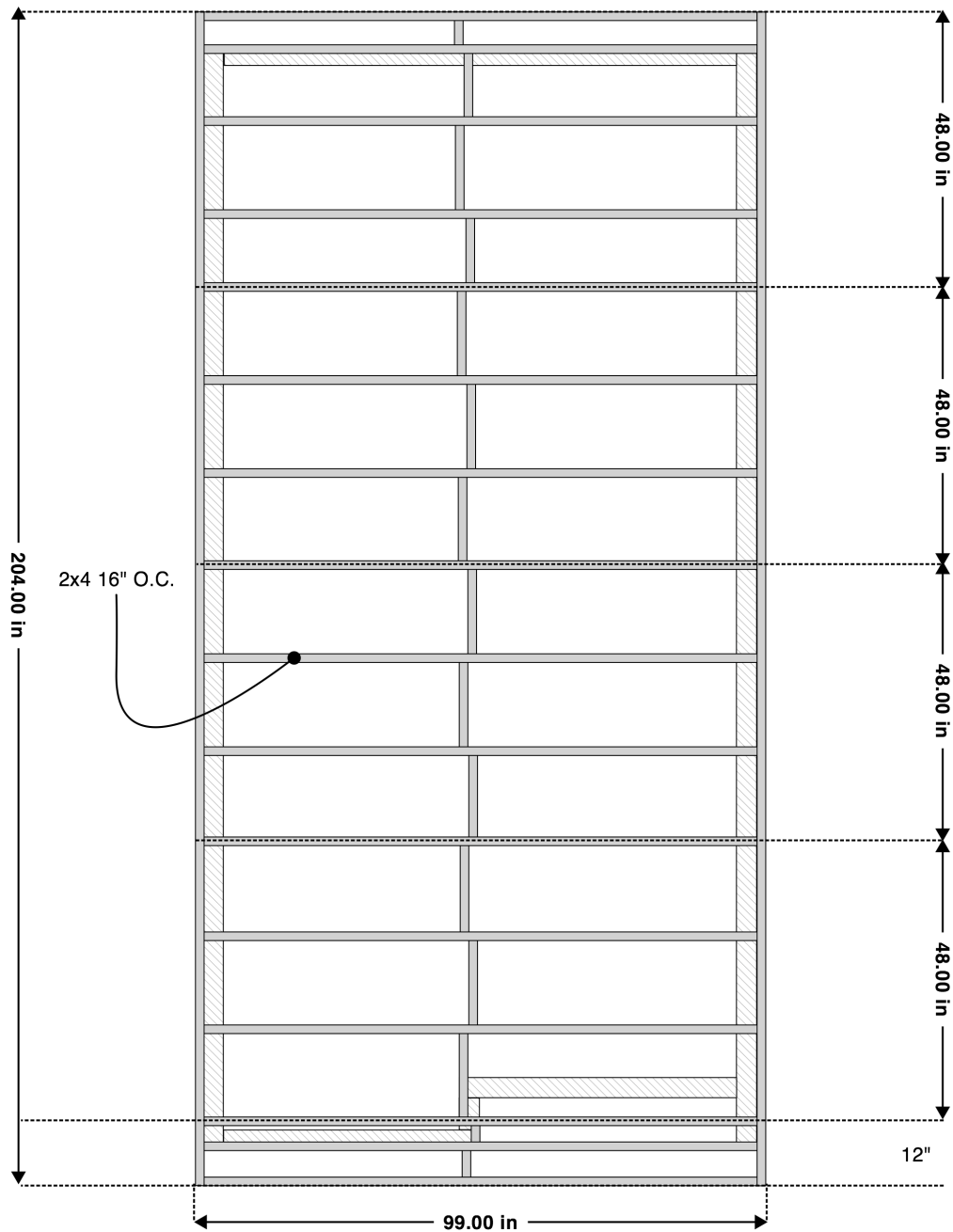
### Left Wall Framing

This diagram illustrates the left wall. There are no openings on this wall. In hot weather this tiny house could be turned to face away from the hot sun.



## Right Wall Framing

The right wall is the main passive solar wall with the most windows. Note that in all the walls a 2x4 is positioned at 48-inch intervals. This provides a convenient nailer for the exterior plywood siding.



### Roof Framing

This is the roof framing. Notice that the 2x4 rafters are placed at 48-inch intervals to provide convenient nailers.

## Materials List

This is an estimate of the basic materials needed to build the shell of this tiny house. Interior sheathing, interior and exterior trim, finish materials, appliances, electrical, and plumbing are not included. Before you get too excited please note that these little things add up. Expect to spend between at least \$4,000 and \$8,000 to build a tiny house this size. The final cost will depend on how frugal and resourceful you are.

Item	Quantity	Each	Total
2x4x8' (Pressure Treated)	21	\$6	\$126
2x4x8'	130	\$2	\$260
4x8x1/2" Plywood	20	\$16	\$320
4x8x5/8" Plywood	6	\$18	\$108
Corrugated Galvanized Roofing (120" x 26")	9	\$17	\$153
15# Roofing Felt	1 Roll	\$25	\$25
Exterior Door & Frame (32 1/2" W x 82" H)	1	\$200	\$200
Window (32" W x 38" H)	1	\$100	\$100
Window (24" W x 24" H)	1	\$80	\$80
Window (32" W x 23" H)	3	\$100	\$300
Window (32" W x 54" H)	3	\$180	\$540
Insulation (R-13 3 1/2" Thick x 15" W x 32' L)	15	\$10	\$150
<b>Total</b>			<b>\$2,362</b>