

LOOK AFTER THE CREATURES WHO LOOK AFTER YOU

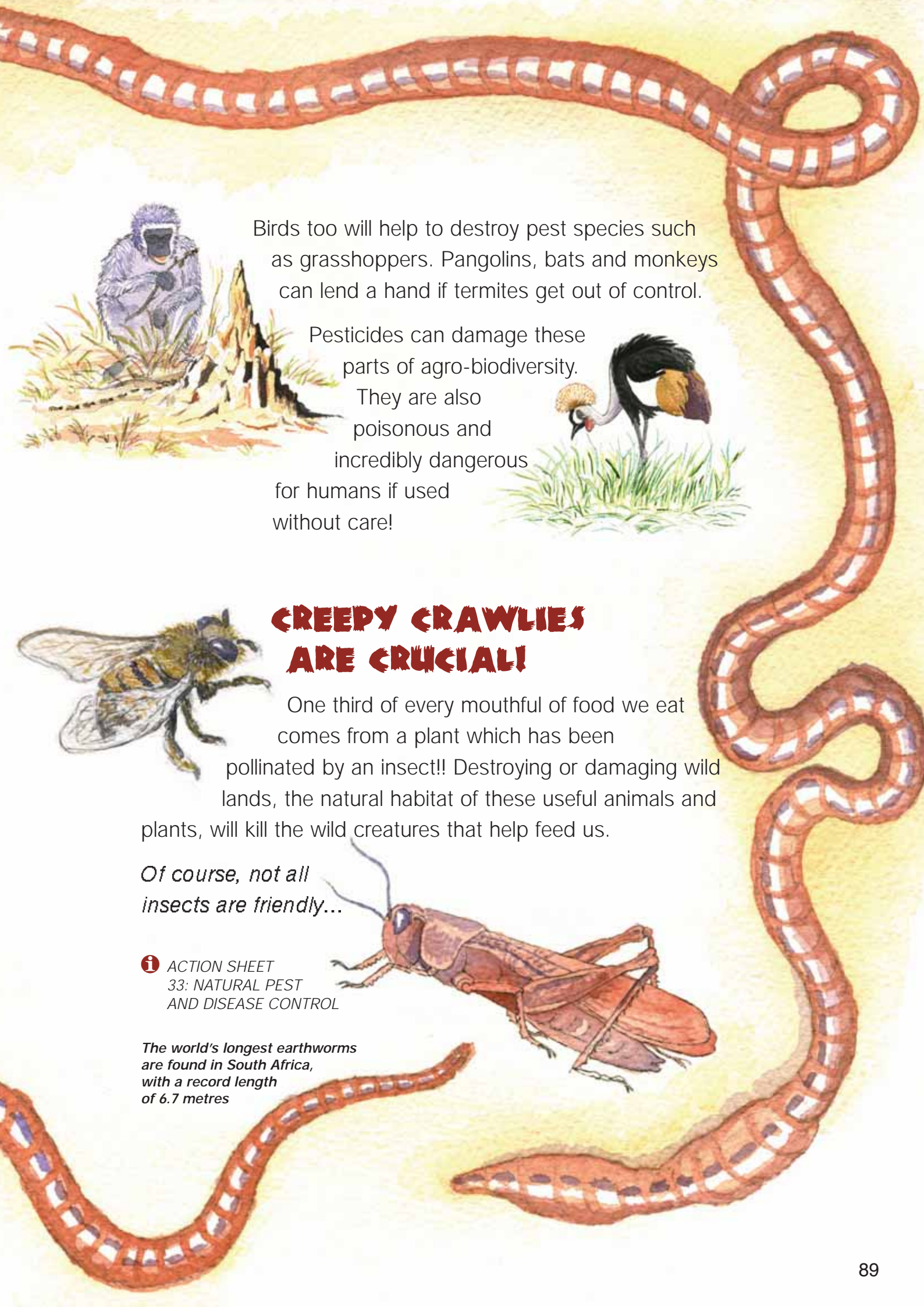


Soil creatures make soil. Bacteria, fly and beetle larvae live in the ground, eating through it and breaking it down into vital nutrients. Earthworms too munch through and produce very fine soil, perfect for plant growth. Dung beetle larvae actually eat dung, recycling it! Without them, we'd be up to our necks.



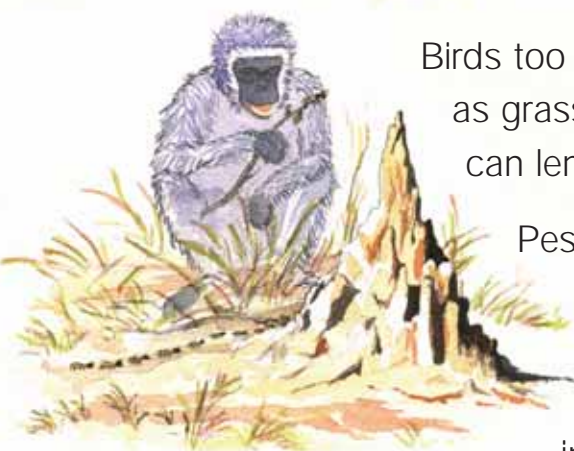
Some insects, bacteria and fungi attack the pests and diseases that destroy farm plants and animals. Ladybirds eat aphids and spiders will eat other pests.





Birds too will help to destroy pest species such as grasshoppers. Pangolins, bats and monkeys can lend a hand if termites get out of control.

Pesticides can damage these parts of agro-biodiversity. They are also poisonous and incredibly dangerous for humans if used without care!



CREEPY CRAWLIES ARE CRUCIAL!

One third of every mouthful of food we eat comes from a plant which has been pollinated by an insect!! Destroying or damaging wild lands, the natural habitat of these useful animals and plants, will kill the wild creatures that help feed us.

Of course, not all insects are friendly...

i ACTION SHEET
33: NATURAL PEST
AND DISEASE CONTROL

The world's longest earthworms are found in South Africa, with a record length of 6.7 metres

