

BMC CONTROL-M Business Process Integration Suite

Integrate batch jobs with online applications to create a single business process

BMC® CONTROL-M® Business Process Integration Suite is an automation broker that enables managing batch jobs and real-time processes as a single business service

- > Event-based scheduling
- > Single view of the business process
- > Service Oriented Architecture (SOA)

Business services rely heavily on IT processes. However, business services and IT processes are not always aligned to the same goal. While business services are aligned according to the objectives of business units or departments, IT processes usually are aligned according to technology infrastructure.

Business processes today span batch jobs as well as real-time processes, but they are still managed from two separate perspectives. Traditionally, batch jobs have been managed via a job scheduler, while real-time processes have been managed by integration brokers. The two have usually been integrated by file transfers and scripts, but these methods are prone to errors.

For example: A general ledger batch process was waiting for a trading Web service to complete. The Web service execution failed, but a message was not properly sent to the batch scheduler to update it accordingly. As a result, the batch flow waited too long before an operator manually initiated it, causing a critical SLA to be missed.

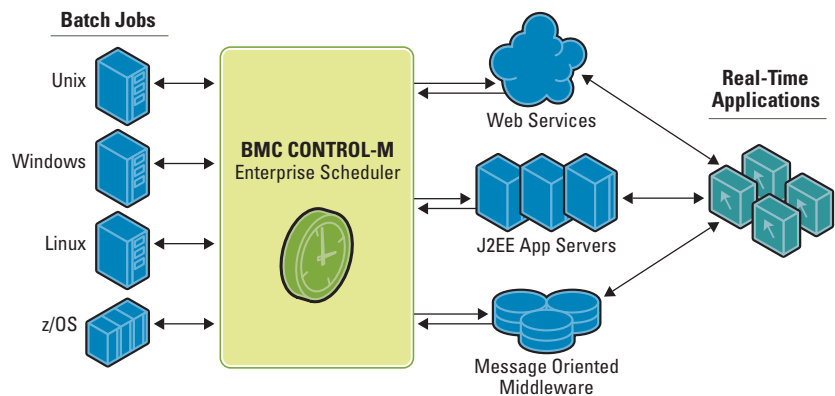


Figure 1. CONTROL-M Business Process Integration Architecture

Bring batch and real-time together with BMC CONTROL-M Business Process Integration Suite

BMC Software provides you with the tools necessary to implement effective application integration by tying together batch jobs and real-time processes into a single scheduled job flow. Legacy batch jobs on mainframe and distributed systems, ERP jobs, and secured file transfers can be integrated with J2EE applications, Web services, and Message-Oriented Middleware into one single-view business process.

Application integration via messaging

Explosive growth of the Internet, new business models, competitive market pressures, and the need to streamline processes — both internally as

well as with partners — have increased the importance of application integration. While Message-Oriented Middleware was one of the first offerings designed to more easily link IT systems, today it is the most common technology enabling business integration. BMC® CONTROL-M® Business Process Integration Suite provides links between batch jobs and other applications that send and receive messages from message queues.

For example: A daily job running in an inventory application on the mainframe indicates through a message queue that the number of mobile phones available in stock is below required threshold. Upon receiving this message, BMC CONTROL-M sends a message into a message queue. A Supply Chain Management (SCM) application picks up

the message from the queue and starts the process of ordering parts to manufacture new phones. Once that process is completed, the SCM application can send a response back to BMC CONTROL-M indicating that it was accomplished successfully.

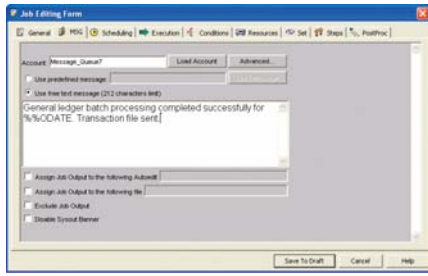


Figure 2. Using the BMC CONTROL-M BPI Suite to integrate with applications via message queues

Service Oriented Architecture

Service Oriented Architecture provides a framework that bridges the gap between the business model and the applications that drive the business to deliver efficient business operation. Web services have become the underlying solutions in the delivery of the SOA strategy, promoting efficient IT operations and minimizing expensive integration efforts. As Web services are being used to integrate among new applications — as well as among legacy and new applications — the need arises to manage Web services job flows, integrate Web services with traditional batch jobs, and assure the timely and accurate completion of business processes.

BMC CONTROL-M Business Process Integration Suite provides a simple method to schedule Web services in the same manner as traditional batch jobs. In addition, it allows a bidirectional Web service interface from external applications into the batch scheduling engine. An application can call a Web service requesting that an ad hoc batch job be created. Other services that can be requested include the triggering of jobs, manipulation of job flows, tracking job status, and handling job alerts.

Java application servers

Many new applications today are being developed in Java, typically powered by a J2EE application server. As a result, new processes based on Java classes and Enterprise Java Beans (EJBs) need to be scheduled following business events such as trade orders or purchasing transactions. Some of these processes may be running in real time,

while others are being accumulated and run in batch. However, the business process spans both the real-time processes and the batch jobs, requiring that these entities be integrated, scheduled, and managed together.

BMC CONTROL-M Business Process Integration Suite provides the ability to schedule Java classes and EJBs in the same way traditional batch jobs are scheduled today. Java jobs can now be integrated and can depend upon execution of non-Java jobs, regardless of platform or application. In addition, BMC CONTROL-M provides a Java API that allows any application to utilize the various BMC CONTROL-M functions, such as job creation, job flow manipulation, job tracking, and so on.

Microsoft .NET

Microsoft® .NET applications can also be integrated with other batch jobs. For example, Microsoft BizTalk Server can expose its processes as Web services that can be scheduled via BMC CONTROL-M Business Process Integration Suite.

Business process integration

BMC CONTROL-M Business Process Integration Suite brings Java applications, Web services, and Message-Oriented Middleware together with traditional batch jobs. This allows for application integration with a single point of control and business service management for the entire enterprise, while reducing code changes.

About BMC Software

BMC Software helps IT organizations drive greater business value through better management of technology. Our industry-leading Business Service Management solutions ensure that everything IT does is prioritized according to business impact, so IT can proactively address business requirements to lower costs, drive revenue, and mitigate risk. BMC solutions share BMC® Atrium™ technologies to enable IT to manage across the complexity of diverse systems and processes — from mainframe to distributed, databases to applications, service to security. Founded in 1980, BMC Software has offices worldwide and fiscal 2005 revenues of more than \$1.46 billion. BMC Software. Activate your business with the power of IT. For more information, visit www.bmc.com.

Key messaging capabilities

- > JMS and WebSphere MQ messaging
- > Sending messages into a queue and waiting for response messages
- > BMC CONTROL-M functionality available via a messaging interface

Web services capabilities

- > Schedule a Web service or a Servlet job
- > BMC CONTROL-M functionality available via a Web service interface
- > Supports all Web services environments, such as J2EE application servers and Microsoft .NET (e.g., BizTalk)

Java and J2EE application servers

- > Schedule a Java class and EJBs
- > BMC CONTROL-M functionality available via a Java API
- > Supports J2EE application servers such as IBM WebSphere, BEA WebLogic, JBoss, SAP NetWeaver, and Oracle Application Server



To learn more about how BMC can help activate your business, visit www.bmc.com or call 800.841.2031.

BMC Software, the BMC Software logos, and all other BMC Software product or service names are registered trademarks or trademarks of BMC Software, Inc. All other registered trademarks or trademarks belong to their respective companies. ©2006 BMC Software, Inc. All rights reserved. 61878



* 6 1 8 7 8 *