

# BMC CONTROL-M/Forecast

Predict IT batch activity to ensure business efficiency

## KEY BENEFITS

- > Identify and correct problems that might disrupt critical business services
- > Enhance efficiency and increase productivity of the IT staff for overall lower IT costs
- > Streamline scheduling to reduce staffing requirements and administrative overhead

## KEY CAPABILITIES

- > Validate the accuracy of batch planning using an enterprise view of the batch flow for a specific date, including estimated time windows for each scheduled task
- > Prevent unplanned and unexpected job executions by ensuring that scheduling attributes are correct
- > Generate valuable trend analysis and workload reports that identify batch processing bottlenecks and potential problems
- > Run what-if scenarios to visualize the impact of optional changes to batch services

Your IT infrastructure is complex and dynamic. You need predictive batch scheduling tools that empower you to deliver IT services efficiently and consistently in an ever-changing environment.

## BUSINESS CHALLENGE

Enterprises today depend on IT to ensure high availability and high performance of a broad range of business-critical services. The complex and dynamic nature of the typical IT infrastructure, however, makes addressing this demand an almost impossible task.

IT professionals today struggle to predict the impact of changes in the batch environment — trying to gauge, for example, how enterprisewide batch flow will look on the 21st of next month, what the batch workload will be on the main file server Wednesday between 14:00 and 17:00, which human resources jobs are scheduled to run offshore next Saturday, and which scheduled jobs will be affected by a four-hour shutdown of the backup machine this weekend.

IT professionals also struggle to validate the exact dates on which critical service batch flows are scheduled. For example, on what future date will a job be scheduled or what impact will a change to the business receipts processing calendar have on the financial batch process?

A single task improperly scheduled may seriously hamper business success. Without full visibility into these and other conditions, it's nearly impossible to deliver quality services at committed service levels.

## THE BMC SOLUTION

With BMC CONTROL-M/Forecast, BMC Software gives you the visibility and insight you need to meet the IT demands of your enterprise. This add-on component to the BMC CONTROL-M scheduling suite predicts the expected flow of batch processes, allowing deep analysis that helps you avoid negative business impacts.

By analyzing the expected behavior of the batch environment at the enterprise level, you can identify unexpected and problematic batch processes and take corrective action. You can also analyze and resolve batch service planning inaccuracies well in advance to minimize disruption to business-critical services.

## VERIFY SCHEDULE ACCURACY

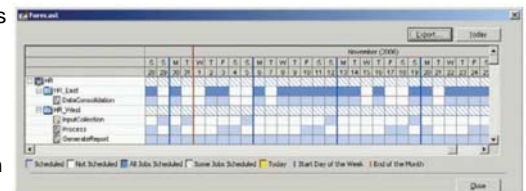
BMC CONTROL-M/Forecast assists you in preventing unexpected job executions by providing schedule verification capabilities. Using a new or previously defined job, you can generate a visual calendar that displays all the dates on which the job will be scheduled.



A visual calendar view of a single task

The calendar takes into consideration all available scheduling factors, including:

- > "Month days" and "week days" scheduling definitions
- > Usage of specific calendars
- > All other BMC CONTROL-M advanced scheduling attributes. With this graphic presentation, you can quickly validate that jobs are not scheduled to run on nonworking days such as holidays. If you are not satisfied with the planned schedule, you can make changes on the fly — right on the calendar. The calendar view immediately reflects your modifications.



Hierarchy scheduled matrix containing multiple tasks.

## POWERFUL REPORTING

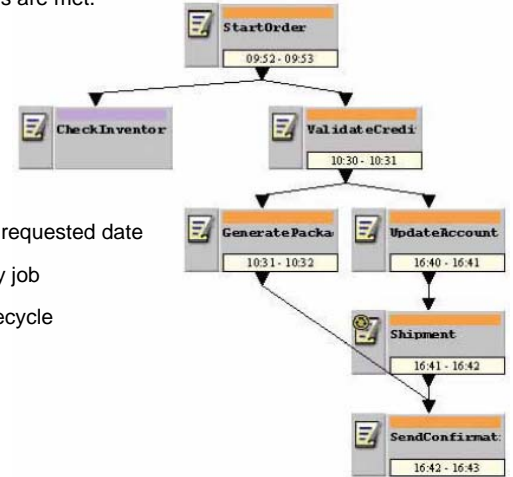
- > Analysis of peak execution time windows
- > Trend analysis
- > Batch job execution time

## A FUTURE DATE BATCH FLOW ESTIMATION

In a dynamic IT environment where changes occur frequently, accurate planning is critical. Accuracy ensures batch services are executed as planned and service levels are met.

BMC CONTROL-M/Forecast analyzes the batch environment, predicting the behavior of future batch flows. It generates a flow diagram as well as a tabular display that provides useful information and analysis capabilities such as:

- > A display of all tasks and their dependencies for the requested date
- > Estimated time execution window for each and every job
- > Extensive information about each job's estimated lifecycle
- > Filtering capabilities
- > Business service analysis through integration with BMC Batch Impact Manager
- > BMC CONTROL-M security capabilities



A BMC CONTROL-M/Forecast future date batch flow, with estimated time windows

BMC CONTROL-M/Forecast allows the same capabilities in a wider scope, looking at the business service level, which comprises more than a single job. When validating the accuracy of a business service schedule, BMC CONTROL-M/Forecast provides a matrix view that clearly displays the planned execution of each job belonging to the business service.

## ABOUT BMC SOFTWARE

BMC Software delivers the solutions IT needs to increase business value through better management of technology and IT processes. Our industry-leading Business Service Management solutions help you reduce cost, lower risk of business disruption, and benefit from an IT infrastructure built to support business growth and flexibility. Only BMC provides best-practice IT processes, automated technology management, and award-winning BMC Atrium technologies that offer a shared view into how IT services support business priorities. Known for enterprise solutions that span mainframe, distributed systems, and end-user devices, BMC also delivers solutions that address the unique challenges of the mid-sized business. Founded in 1980, BMC has offices worldwide and fiscal 2007 revenues of \$1.58 billion. Activate your business with the power of IT. [www.bmc.com](http://www.bmc.com).

## EXTENSIVE REPORTING

Enhanced reporting enables historical analysis of various profiles. Generating forecast reports is simple and straightforward with BMC CONTROL-M reporting capabilities. The solution maintains rich job execution information, allowing you to create valuable reports, such as:

- > Analysis of peak execution time windows for the last business day of the previous quarter
- > Trend analysis displayed as a histogram of all jobs associated with a specific application running within a specified time frame during a specified time period (for example, "the HR application running on Thursday afternoon between 14:30 and 17:00 during the last two months")
- > All batch job execution times for the previous night

Each report provides a graph to speed the discovery of trends or specific peaks — enabling you to drill down to the specific job level.

## BETTER PLANNING, BETTER RESULTS

Planning batch processing in advance can greatly decrease the amount of unplanned or unexpected failures and increase business accuracy and efficiency.

The BMC CONTROL-M/Forecast helps you better plan your batch services to eliminate negative business impacts. Identifying bottlenecks or available time slots within the batch flow is straightforward, as is validating the accuracy and effect of ongoing changes and adjustments of the batch flows to business requirements. Extensive reporting allows analysis of your batch environment so you can identify trends and workloads and react accordingly.

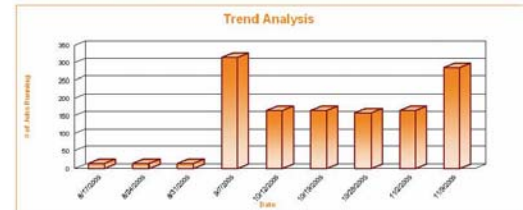
### Trend analysis for Wednesday mornings

Printed Date: Wednesday, November 09, 2005 | Last Modified: Wednesday, November 09, 2005

Data Date: Wednesday, November 09, 2005

Author: empsm

Report Description:



A trend analysis report covering Thursday afternoon for the last 10 weeks



To learn more about how BMC can help activate your business, visit [www.bmc.com](http://www.bmc.com) or call (800) 841-2031

BMC, BMC Software, and the BMC Software logo are the exclusive properties of BMC Software, Inc., are registered with the U.S. Patent and Trademark Office, and may be registered or pending registration in other countries. All other BMC trademarks, service marks, and logos may be registered or pending registration in the U.S. or in other countries. All other trademarks or registered trademarks are the property of their respective owners. © 2007 BMC Software, Inc. All rights reserved.

