



Red Hat Enterprise Linux 7 Kernel Crash Dump Guide

Kernel Crash Dump Configuration and Analysis

Jaromír Hradílek

Petr Bokoč

Red Hat Enterprise Linux 7 Kernel Crash Dump Guide

Kernel Crash Dump Configuration and Analysis

Jaromír Hradílek
Red Hat Engineering Content Services
jhradilek@redhat.com

Petr Bokoč
Red Hat Engineering Content Services
pbokoc@redhat.com

Legal Notice

Copyright © 2014 Red Hat, Inc.

This document is licensed by Red Hat under the [Creative Commons Attribution-ShareAlike 3.0 Unported License](#). If you distribute this document, or a modified version of it, you must provide attribution to Red Hat, Inc. and provide a link to the original. If the document is modified, all Red Hat trademarks must be removed.

Red Hat, as the licensor of this document, waives the right to enforce, and agrees not to assert, Section 4d of CC-BY-SA to the fullest extent permitted by applicable law.

Red Hat, Red Hat Enterprise Linux, the Shadowman logo, JBoss, MetaMatrix, Fedora, the Infinity Logo, and RHCE are trademarks of Red Hat, Inc., registered in the United States and other countries.

Linux ® is the registered trademark of Linus Torvalds in the United States and other countries.

Java ® is a registered trademark of Oracle and/or its affiliates.

XFS ® is a trademark of Silicon Graphics International Corp. or its subsidiaries in the United States and/or other countries.

MySQL ® is a registered trademark of MySQL AB in the United States, the European Union and other countries.

Node.js ® is an official trademark of Joyent. Red Hat Software Collections is not formally related to or endorsed by the official Joyent Node.js open source or commercial project.

The OpenStack ® Word Mark and OpenStack Logo are either registered trademarks/service marks or trademarks/service marks of the OpenStack Foundation, in the United States and other countries and are used with the OpenStack Foundation's permission. We are not affiliated with, endorsed or sponsored by the OpenStack Foundation, or the OpenStack community.

All other trademarks are the property of their respective owners.

Abstract

The Kernel Crash Dump Guide documents how to configure, test, and use the kdump crash recovery service on Red Hat Enterprise Linux 7, and provides a brief overview of how to analyze the resulting core dump using the crash debugging utility. It is oriented towards system administrators with a basic understanding of the Red Hat Enterprise Linux system.

Table of Contents

Chapter 1. Introduction to kdump	2
1.1. About kdump and kexec	2
1.2. Memory Requirements	2
Chapter 2. Installing and Configuring kdump	4
2.1. Installing kdump	4
2.2. Configuring kdump at the First Boot	4
2.3. Configuring kdump on the Command Line	5
2.4. Configuring kdump in the Graphical User Interface	8
2.5. Testing the kdump Configuration	11
2.6. Additional Resources	11
Chapter 3. Analyzing a Core Dump	13
3.1. Installing the crash Utility	13
3.2. Running the crash Utility	13
3.3. Displaying the Message Buffer	14
3.4. Displaying a Backtrace	15
3.5. Displaying a Process Status	16
3.6. Displaying Virtual Memory Information	16
3.7. Displaying Open Files	17
3.8. Exiting the Utility	17
Frequently Asked Questions	19
Supported kdump Configurations and Targets	20
B.1. Memory Requirements for kdump	20
B.2. Minimum Threshold for Automatic Memory Reservation	20
B.3. Supported kdump Targets	21
B.4. Supported kdump Filtering Levels	21
B.5. Supported Default Actions	22
Revision History	23

Chapter 1. Introduction to kdump

1.1. About kdump and kexec

Kdump is a kernel crash dumping mechanism that allows you to save the contents of the system's memory for later analysis. It relies on **kexec**, which can be used to boot a Linux kernel from the context of another kernel, bypass BIOS, and preserve the contents of the first kernel's memory that would otherwise be lost.

In case of a system crash, kdump uses kexec to boot into a second kernel (a *capture kernel*). This second kernel resides in a reserved part of the system memory that is inaccessible to the first kernel. The second kernel then captures the contents of the crashed kernel's memory (a *crash dump*) and saves it.



Important

UEFI-based systems are not supported in the current version of **kexec**. However, **kdump** itself is still able to collect the crash dump and its reliability is not impacted.

1.2. Memory Requirements

In order for kdump to be able to capture a kernel crash dump and save it for further analysis, a part of the system memory has to be permanently reserved for the capture kernel. When reserved, this part of the system memory is not available to main kernel.

The memory requirements vary based on certain system parameters. One of the major factors is the system's hardware architecture. To find out the exact name of the machine architecture (such as **x86_64**) and print it to standard output, type the following command at a shell prompt:

```
uname -m
```

Another factor which influences the amount of memory to be reserved is the total amount of installed system memory. For example, on the **x86_64** architecture, the amount of reserved memory will be 160 MB + 2 bits for every 4 KB of RAM. On a system with 1 TB of total physical memory installed, this means 224 MB (160 MB + 64 MB). For a complete list of memory requirements for kdump based on the system architecture and the amount of physical memory, see [Section B.1, “Memory Requirements for kdump”](#).

On many systems, kdump can estimate the amount of required memory and reserve it automatically. This behavior is enabled by default, but only works on systems that have more than a certain amount of total available memory, which varies based on the system architecture. See [Section B.2, “Minimum Threshold for Automatic Memory Reservation”](#) for a list of minimum requirements for automatic memory reservation based on the system architecture.

If the system has less than the minimum amount of memory required for the automatic allocation to work or if your use case requires a different value, you can configure the amount of reserved memory manually. For information on how to do so on the command line, see [Section 2.3.1, “Configuring the Memory Usage”](#). For information on how to configure the amount of reserved memory in the graphical user interface, see [Section 2.4.1, “Configuring the Memory Usage”](#).



Important

It is highly recommended to test the configuration after setting up the kdump service, even when using the automatic memory reservation. For instructions on how to test your configuration, see [Section 2.5, “Testing the kdump Configuration”](#).

Chapter 2. Installing and Configuring kdump

2.1. Installing kdump

In order use the **kdump** service on your system, make sure you have the *kexec-tools* package installed. To do so, type the following at a shell prompt as **root**:

```
yum install kexec-tools
```

Additionally, if you wish to configure **kdump** using a graphical user interface instead of the command line, install the *system-config-kdump* utility using the following command as **root**:

```
yum install system-config-kdump
```

For more information on how to install new packages in Red Hat Enterprise Linux, see the *Red Hat Enterprise Linux 7 System Administrator's Guide*.



Important

A limitation in the current implementation of the **Intel IOMMU** driver can occasionally prevent the **kdump** service from capturing the core dump image. To use kdump on Intel architectures reliably, it is advised that the IOMMU support is disabled.

2.2. Configuring kdump at the First Boot

When the system boots for the first time, the **firstboot** application is launched to guide the user through the initial configuration of the freshly installed system. To configure **kdump**, navigate to the **Kdump** section and follow the instructions below.

2.2.1. Configuring the Memory Usage

By default, the amount of memory reserved for the **kdump** kernel is determined automatically. If you want to configure the amount of reserved memory manually, set the **Kdump Memory Reservation** option to **Manual** and then use the **Memory To Be Reserved (MB)** field to set the amount of reserved memory in megabytes. Notice that the **Usable System Memory** field changes accordingly, showing you the remaining memory that will be available to the system.

2.2.2. Advanced kdump Configuration

The lower part of the kdump configuration screen contains a large text field labelled **Advanced kdump configuration**. This field shows the contents of the `/etc/kdump.conf` configuration file, which allows you to configure advanced settings such as the target location, default action and the core collector.

The first part of the file contains a short introduction and descriptions of the various possible options. The second, shorter part contains a list of actual options, which are commented out by default. If you want to change any of the options, remove the hash sign ("**#**") from the beginning of that line and change the option to a desired value.

See [Section 2.3, “Configuring kdump on the Command Line”](#) for more details on configuring **kdump** using the `/etc/kdump.conf` configuration file.

2.2.3. Enabling the kdump Service

To allow the **kdump** daemon to start at boot time, select the **Enable kdump?** checkbox. This will enable the service for `multi-user.target`. Similarly, unselecting the checkbox will disable the service.

After you finish making changes to the initial configuration, press the **Forward** button in the lower right hand corner. Some changes in **Kdump** settings, such as changing the amount of reserved memory, will result in a prompt informing you that a reboot is necessary before the service will be able to capture kernel crash dumps.

2.3. Configuring kdump on the Command Line

2.3.1. Configuring the Memory Usage

To change the amount of memory reserved for kdump, it is necessary to edit the `/etc/default/grub` configuration file. Open this file in a text editor as **root** and find a line beginning with **GRUB_CMDLINE_LINUX**. On this line, you will find the following:

```
GRUB_CMDLINE_LINUX="rd.md=0 rd.dm=0 rd.lvm.lv=rhel/swap $([ -x
/usr/sbin/rhcrashkernel-param ] && /usr/sbin/rhcrashkernel-param || :) rd.luks=0
vconsole.keymap=us rd.lvm.lv=rhel/root rhgb quiet"
```

The highlighted part references a script (`/usr/sbin/rhcrashkernel-param`) which automatically generates the amount of reserved memory. If you wish to set the reserved memory to a fixed amount, replace the entire highlighted string with a **crashkernel=x** parameter, where *x* is the amount of memory you want to reserve for kdump. For example, to reserve 128 MB of memory, use the following:

```
crashkernel=128M
```

You can also set the amount of reserved memory to be variable, depending on the total amount of installed memory. The syntax is for variable memory reservation is **crashkernel=<range1>:<size1>,<range2>:<size2>**. For example:

```
crashkernel=512M-2G:64M,2G-:128M
```

The above example will reserve 64 MB of memory if the total amount of system memory is 512 MB or higher and lower than 2 GB. If the total amount of memory is more than 2 GB, 128 MB will be reserved for kdump instead.

On some systems, it might be necessary to reserve memory with a certain fixed offset. If the offset is set, the reserved memory will begin there. To offset the reserved memory, use the following syntax:

```
crashkernel=128M@16M
```

The example above means that kdump will reserve 128 MB of memory starting at 16 MB (physical address 0x01000000). If the offset parameter is set to 0 or omitted entirely, kdump will offset the reserved memory automatically. This syntax can also be used when setting a variable memory reservation as described above; in this case, the offset is always specified last (for example, **crashkernel=512M-2G:64M,2G-:128M@16M**).

After entering the desired values and saving the file, update the actual GRUB2 configuration file. This file's location depends on whether the system uses **BIOS** or **UEFI**. On systems using BIOS, use the following command:

```
grub2-mkconfig -o /boot/grub2/grub.cfg
```

On UEFI-based systems, use the following command instead:

```
grub2-mkconfig -o /boot/efi/EFI/redhat/grub.cfg
```

After the next system reboot, the reserved memory will be equal to the amount set in the `/etc/default/grub` configuration file.

2.3.2. Configuring the kdump Type

When a kernel crash is captured, the core dump can be either stored as a file in a local file system, written directly to a device, or sent over a network using the **NFS** (Network File System) or **SSH** (Secure Shell) protocol. Only one of these options can be set at the moment, and the default option is to store the **vmcore** file in the `/var/crash/` directory of the local file system. To change this, as **root**, open the `/etc/kdump.conf` configuration file in a text editor and edit the options as described below.

To change the local directory in which the core dump is to be saved, remove the hash sign (“#”) from the beginning of the `#path /var/crash` line, and replace the value with a desired directory path.

```
path /usr/local/cores
```

Optionally, if you wish to write the file to a different partition, follow the same procedure with the one of the lines beginning with `#ext4`. Here, you can use either a device name (the `#ext4 /dev/vg/lv_kdump` line), a file system label (the `#ext4 LABEL=/boot` line) or an UUID (the `#ext4 UUID=03138356-5e61-4ab3-b58e-27507ac41937` line). Change the file system type as well as the device name, label or UUID to the desired values. For example:

```
ext4 /dev/sda3
```

To write the dump directly to a device, remove the hash sign (“#”) from the beginning of the `#raw /dev/vg/lv_kdump` line, and replace the value with a desired device name. For example:

```
raw /dev/sdb1
```

To store the dump to a remote machine using the **NFS** protocol, remove the hash sign (“#”) from the beginning of the `#nfs my.server.com:/export/tmp` line, and replace the value with a valid hostname and directory path. For example:

```
nfs penguin.example.com:/export/cores
```

To store the dump to a remote machine using the **SSH** protocol, remove the hash sign (“#”) from the beginning of the `#ssh user@my.server.com` line, and replace the value with a valid username and hostname. To include your SSH key in the configuration as well, remove the hash sign (“#”) from the beginning of the `#sshkey /root/.ssh/kdump_id_rsa` line and change the value to the location of a key valid on the server you are trying to dump to. For example:

```
ssh john@penguin.example.com
sshkey /root/.ssh/mykey
```

For information on how to configure an SSH server and set up a key-based authentication, see the *Red Hat Enterprise Linux 7 System Administrator's Guide*.

For a complete list of currently supported and unsupported targets sorted by type, see [Table B.3, “Supported kdump Targets”](#).

2.3.3. Configuring the Core Collector

To reduce the size of the **vmcore** dump file, **kdump** allows you to specify an external application (that is, a core collector) to compress the data, and optionally leave out all irrelevant information. Currently, the only fully supported core collector is **makedumpfile**.

To enable the core collector, as **root**, open the **/etc/kdump.conf** configuration file in a text editor, remove the hash sign (“#”) from the beginning of the **#core_collector makedumpfile -c --message-level 1 -d 31** line, and edit the command line options as described below.

To enable the dump file compression, add the **-c** parameter. For example:

```
core_collector makedumpfile -c
```

To remove certain pages from the dump, add the **-d value** parameter, where *value* is a sum of values of pages you want to omit as described in [Table B.4, “Supported Filtering Levels”](#). For example, to remove both zero and free pages, use the following:

```
core_collector makedumpfile -d 17 -c
```

See the manual page for **makedumpfile** for a complete list of available options.

2.3.4. Configuring the Default Action

By default, when **kdump** fails to create a core dump at the target location specified in [Section 2.3.2, “Configuring the kdump Type”](#), the root file system is mounted and **kdump** attempts to save the core locally. To change this behavior, as **root**, open the **/etc/kdump.conf** configuration file in a text editor, remove the hash sign (“#”) from the beginning of the **#default shell** line, and replace the value with a desired action as described in [Table B.5, “Supported Default Actions”](#).

For example:

```
default reboot
```

2.3.5. Enabling the Service

To start the **kdump** daemon at boot time, type the following at a shell prompt as **root**:

```
systemctl enable kdump.service
```

This will enable the service for **multi-user.target**. Similarly, typing **systemctl stop kdump** will disable it. To start the service in the current session, use the following command as **root**:

```
systemctl start kdump.service
```

For more information on `systemd` and configuring services in general, see the *Red Hat Enterprise Linux 7 System Administrator's Guide*.

2.4. Configuring `kdump` in the Graphical User Interface

To start the **Kernel Dump Configuration** utility, select **Activities** → **Other** → **Kernel crash dumps** from the panel, or type `system-config-kdump` at a shell prompt. You will be presented with a window as shown in [Figure 2.1, “Basic Settings”](#).

The utility allows you to configure `kdump` as well as to enable or disable starting the service at boot time. When you are done, click **Apply** to save the changes. Unless you are already authenticated, you will be prompted to enter the superuser password. The utility will also remind you that you must reboot the system in order to apply any changes you have made to the configuration.

2.4.1. Configuring the Memory Usage

The **Basic Settings** tab enables you to configure the amount of memory that is reserved for the `kdump` kernel. To do so, select the **Manual settings** radio button, and click the up and down arrow buttons next to the **New `kdump` Memory** field to increase or decrease the amount of memory to be reserved. Notice that the **Usable Memory** field changes accordingly showing you the remaining memory that will be available to the system. See [Section 1.2, “Memory Requirements”](#) for more information on `kdump`'s memory requirements.

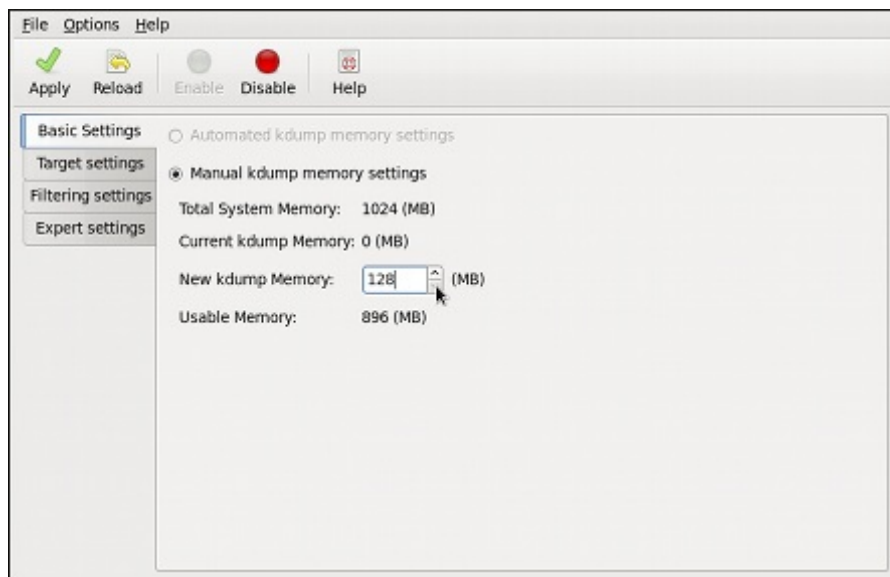


Figure 2.1. Basic Settings

2.4.2. Configuring the `kdump` Type

The **Target Settings** tab allows you to specify the target location for the `vmcore` dump. The dump can be either stored as a file in a local file system, written directly to a device, or sent over a network using the **NFS** (Network File System) or **SSH** (Secure Shell) protocol.

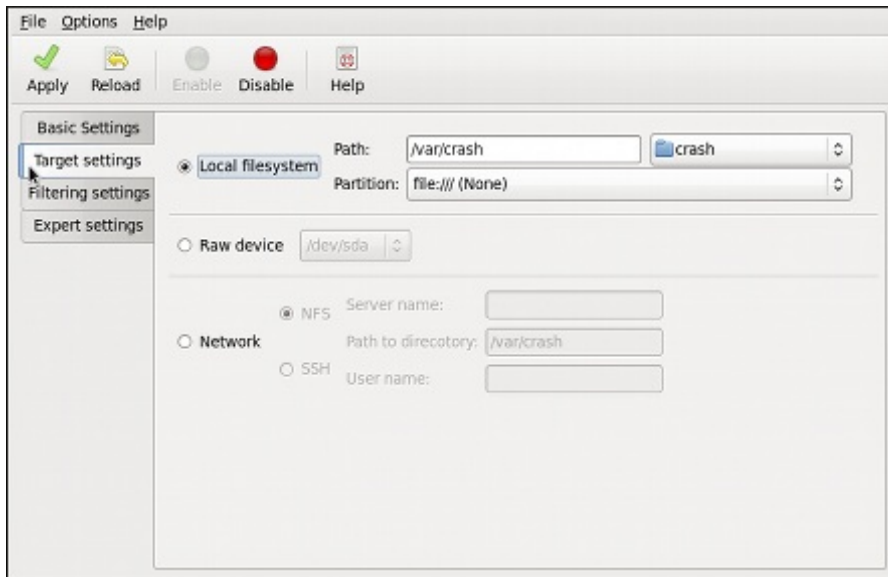


Figure 2.2. Target Settings

To save the dump to the local file system, select the **Local filesystem** radio button. Optionally, you can customize the settings by choosing a different partition from the **Partition** drop-down list and a target directory using the **Path** field.

To write the dump directly to a device, select the **Raw device** radio button, and choose the desired target device from the drop-down list next to it.

To send the dump to a remote machine over a network connection, select the **Network** radio button. To use the **NFS** protocol, select the **NFS** radio button, and fill the **Server name** and **Path to directory** fields. To use the **SSH** protocol, select the **SSH** radio button, and fill the **Server name**, **Path to directory**, and **User name** fields with the remote server address, target directory, and a valid user name respectively.

For information on how to configure an SSH server and set up a key-based authentication, see the *Red Hat Enterprise Linux 7 System Administrator's Guide*. For a complete list of currently supported targets, see [Table B.3, “Supported kdump Targets”](#).

2.4.3. Configuring the Core Collector

The **Filtering Settings** tab enables you to select the filtering level for the **vmcore** dump.

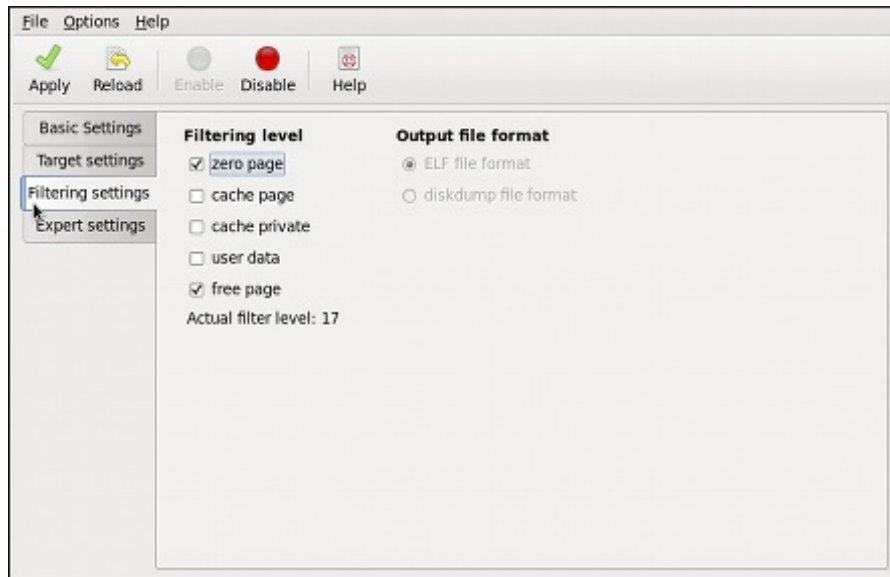


Figure 2.3. Filtering Settings

To exclude the **zero page**, **cache page**, **cache private**, **user data**, or **free page** from the dump, select the checkbox next to the appropriate label.

2.4.4. Configuring the Default Action

To choose what action to perform when **kdump** fails to create a core dump, select an appropriate option from the **Default action** drop-down list. Available options are **dump to rootfs and reboot** (the default action which attempts to save the core locally and then reboots the system), **reboot** (to reboot the system), **shell** (to present a user with an interactive shell prompt), **halt** (to halt the system), and **poweroff** (to power the system off).

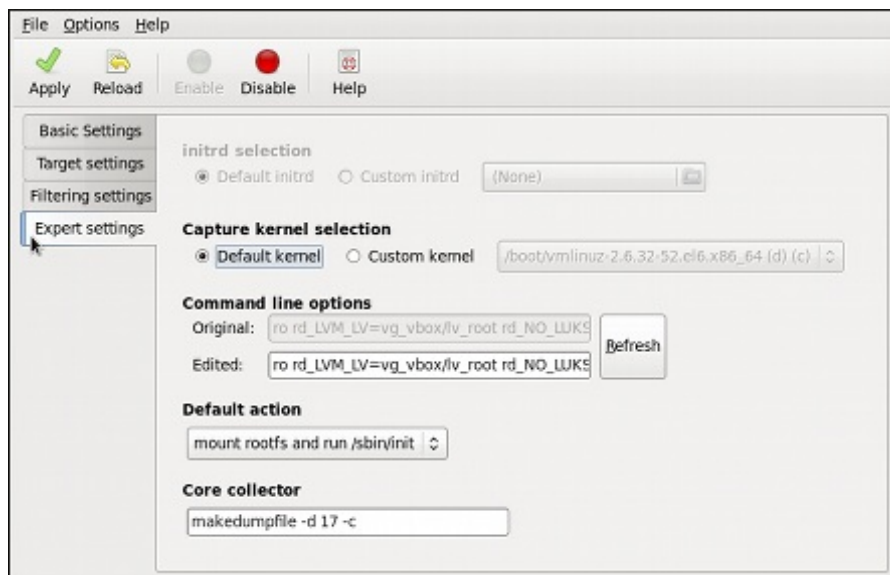


Figure 2.4. Filtering Settings

To customize the options that are passed to the **makedumpfile** core collector, edit the **Core collector** text field; see [Section 2.3.3, “Configuring the Core Collector”](#) for more information.

2.4.5. Enabling the Service

To start the **kdump** service at boot time, click the **Enable** button on the toolbar and then click the **Apply** button. This will enable and activate the service for **multi-user.target**. Clicking the **Disable** button and confirming by clicking the **Apply** button will disable the service immediately.

For more information on systemd targets and configuring services in general, see the *Red Hat Enterprise Linux 7 System Administrator's Guide*.

2.5. Testing the kdump Configuration



Warning

The commands below will cause the kernel to crash. Use caution when following these steps, and by no means use them on a production system.

To test the configuration, reboot the system with **kdump** enabled, and make sure that the service is running:

```
~]# systemctl is-active kdump
active
```

Then type the following commands at a shell prompt:

```
echo 1 > /proc/sys/kernel/sysrq
echo c > /proc/sysrq-trigger
```

This will force the Linux kernel to crash, and the **address-YYYY-MM-DD-HH:MM:SS/vmcore** file will be copied to the location you have selected in the configuration (that is, to **/var/crash/** by default).

2.6. Additional Resources

2.6.1. Installed Documentation

- ▶ **kdump.conf(5)** — a manual page for the **/etc/kdump.conf** configuration file containing the full documentation of available options.
- ▶ **makedumpfile(8)** — a manual page for the **makedumpfile** core collector.
- ▶ **kexec(8)** — a manual page for **kexec**.
- ▶ **crash(8)** — a manual page for the **crash** utility.
- ▶ **/usr/share/doc/kexec-tools-version/kexec-kdump-howto.txt** — an overview of the **kdump** and **kexec** installation and usage.

2.6.2. Online Documentation

<https://access.redhat.com/site/solutions/6038>

The Red Hat Knowledgebase article about the **kexec** and **kdump** configuration.

<https://access.redhat.com/site/solutions/223773>

The Red Hat Knowledgebase article about supported **kdump** targets.

<http://people.redhat.com/anderson/>

The **crash** utility homepage.

2.6.3. See Also

stuff

Chapter 3. Analyzing a Core Dump

To determine the cause of the system crash, you can use the **crash** utility, which provides an interactive prompt very similar to the GNU Debugger (GDB). This utility allows you to interactively analyze a running Linux system as well as a core dump created by **netdump**, **diskdump**, **xendump**, or **kdump**.

3.1. Installing the crash Utility

To install the **crash** analyzing tool, execute the following command from a shell prompt as **root**:

```
yum install crash
```

In addition to **crash**, it is also necessary to install the *kernel-debuginfo* package, which provides the data necessary for dump analysis. To install this package, you will first need to enable the relevant repository. To do this, execute the following command from the command line as **root**:

```
yum --enablerepo=*debuginfo
```

After enabling the repository, install the *kernel-debuginfo* package by executing the following command as **root**:

```
debuginfo-install kernel
```

For more information on how to install new packages in Red Hat Enterprise Linux, see the *Red Hat Enterprise Linux 7 System Administrator's Guide*.

3.2. Running the crash Utility

To start the utility, type the command in the following form at a shell prompt:

```
crash /var/crash/<timestamp>/vmcore /usr/lib/debug/lib/modules/<kernel>/vmlinux
```

Note that the *<kernel>* version should be the same that was captured by **kdump**. To find out which kernel you are currently running, use the **uname -r** command.

Example 3.1. Running the crash utility

```
~]# crash /usr/lib/debug/lib/modules/2.6.32-69.el6.i686/vmlinux \  
/var/crash/127.0.0.1-2010-08-25-08:45:02/vmcore  
  
crash 5.0.0-23.el6  
Copyright (C) 2002-2010 Red Hat, Inc.  
Copyright (C) 2004, 2005, 2006 IBM Corporation  
Copyright (C) 1999-2006 Hewlett-Packard Co  
Copyright (C) 2005, 2006 Fujitsu Limited  
Copyright (C) 2006, 2007 VA Linux Systems Japan K.K.  
Copyright (C) 2005 NEC Corporation  
Copyright (C) 1999, 2002, 2007 Silicon Graphics, Inc.  
Copyright (C) 1999, 2000, 2001, 2002 Mission Critical Linux, Inc.  
This program is free software, covered by the GNU General Public License,  
and you are welcome to change it and/or distribute copies of it under  
certain conditions. Enter "help copying" to see the conditions.  
This program has absolutely no warranty. Enter "help warranty" for details.  
  
GNU gdb (GDB) 7.0  
Copyright (C) 2009 Free Software Foundation, Inc.  
License GPLv3+: GNU GPL version 3 or later <http://gnu.org/licenses/gpl.html>  
This is free software: you are free to change and redistribute it.  
There is NO WARRANTY, to the extent permitted by law. Type "show copying"  
and "show warranty" for details.  
This GDB was configured as "i686-pc-linux-gnu"..  
  
      KERNEL: /usr/lib/debug/lib/modules/2.6.32-69.el6.i686/vmlinux  
      DUMPFILE: /var/crash/127.0.0.1-2010-08-25-08:45:02/vmcore [PARTIAL DUMP]  
      CPUS: 4  
      DATE: Wed Aug 25 08:44:47 2010  
      UPTIME: 00:09:02  
LOAD AVERAGE: 0.00, 0.01, 0.00  
      TASKS: 140  
NODENAME: hp-dl320g5-02.lab.bos.redhat.com  
RELEASE: 2.6.32-69.el6.i686  
VERSION: #1 SMP Tue Aug 24 10:31:45 EDT 2010  
MACHINE: i686 (2394 Mhz)  
MEMORY: 8 GB  
      PANIC: "Oops: 0002 [#1] SMP " (check log for details)  
      PID: 5591  
COMMAND: "bash"  
      TASK: f196d560 [THREAD_INFO: ef4da000]  
      CPU: 2  
      STATE: TASK_RUNNING (PANIC)  
  
crash>
```

3.3. Displaying the Message Buffer

To display the kernel message buffer, type the **log** command at the interactive prompt.

Example 3.2. Displaying the kernel message buffer

```

crash> log
... several lines omitted ...
EIP: 0060:[<c068124f>] EFLAGS: 00010096 CPU: 2
EIP is at sysrq_handle_crash+0xf/0x20
EAX: 00000063 EBX: 00000063 ECX: c09e1c8c EDX: 00000000
ESI: c0a09ca0 EDI: 00000286 EBP: 00000000 ESP: ef4dbf24
DS: 007b ES: 007b FS: 00d8 GS: 00e0 SS: 0068
Process bash (pid: 5591, ti=ef4da000 task=f196d560 task.ti=ef4da000)
Stack:
c068146b c0960891 c0968653 00000003 00000000 00000002 efade5c0 c06814d0
<0> ffffffff b7776000 f2600c40 c0569ec4 ef4dbf9c 00000002 b7776000
<0> efade5c0 00000002 b7776000 c0569e60 c051de50 ef4dbf9c f196d560 ef4dbfb4
Call Trace:
[<c068146b>] ? __handle_sysrq+0xfb/0x160
[<c06814d0>] ? write_sysrq_trigger+0x0/0x50
[<c068150f>] ? write_sysrq_trigger+0x3f/0x50
[<c0569ec4>] ? proc_reg_write+0x64/0xa0
[<c0569e60>] ? proc_reg_write+0x0/0xa0
[<c051de50>] ? vfs_write+0xa0/0x190
[<c051e8d1>] ? sys_write+0x41/0x70
[<c0409adc>] ? syscall_call+0x7/0xb
Code: a0 c0 01 0f b6 41 03 19 d2 f7 d2 83 e2 03 83 e0 cf c1 e2 04 09 d0 88 41 03
f3 c3 90 c7 05 c8 1b 9e c0 01 00 00 00 0f ae f8 89 f6 <c6> 05 00 00 00 00 01 c3
89 f6 8d bc 27 00 00 00 00 8d 50 d0 83
EIP: [<c068124f>] sysrq_handle_crash+0xf/0x20 SS:ESP 0068:ef4dbf24
CR2: 0000000000000000

```

Type **help log** for more information on the command usage.

3.4. Displaying a Backtrace

To display the kernel stack trace, type the **bt** command at the interactive prompt. You can use **bt <pid>** to display the backtrace of a single process.

Example 3.3. Displaying the kernel stack trace

```

crash> bt
PID: 5591   TASK: f196d560   CPU: 2   COMMAND: "bash"
#0 [ef4dbdcc] crash_kexec at c0494922
#1 [ef4dbe20] oops_end at c080e402
#2 [ef4dbe34] no_context at c043089d
#3 [ef4dbe58] bad_area at c0430b26
#4 [ef4dbe6c] do_page_fault at c080fb9b
#5 [ef4dbee4] error_code (via page_fault) at c080d809
   EAX: 00000063   EBX: 00000063   ECX: c09e1c8c   EDX: 00000000   EBP: 00000000
   DS:  007b      ESI: c0a09ca0   ES:  007b      EDI: 00000286   GS:  00e0
   CS:  0060      EIP: c068124f   ERR: ffffffff   EFLAGS: 00010096
#6 [ef4dbf18] sysrq_handle_crash at c068124f
#7 [ef4dbf24] __handle_sysrq at c0681469
#8 [ef4dbf48] write_sysrq_trigger at c068150a
#9 [ef4dbf54] proc_reg_write at c0569ec2
#10 [ef4dbf74] vfs_write at c051de4e
#11 [ef4dbf94] sys_write at c051e8cc
#12 [ef4dbfb0] system_call at c0409ad5
   EAX: ffffffffda   EBX: 00000001   ECX: b7776000   EDX: 00000002
   DS:  007b      ESI: 00000002   ES:  007b      EDI: b7776000
   SS:  007b      ESP: bfc22088   EBP: bfc220b4   GS:  0033
   CS:  0073      EIP: 00edc416   ERR: 00000004   EFLAGS: 00000246

```

Type **help bt** for more information on the command usage.

3.5. Displaying a Process Status

To display status of processes in the system, type the **ps** command at the interactive prompt. You can use **ps <pid>** to display the status of a single process.

Example 3.4. Displaying the status of processes in the system

```

crash> ps
  PID   PPID  CPU  TASK          ST  %MEM  VSZ   RSS  COMM
>    0     0    0  c09dc560     RU   0.0    0     0  [swapper]
>    0     0    1  f7072030     RU   0.0    0     0  [swapper]
    0     0    2  f70a3a90     RU   0.0    0     0  [swapper]
>    0     0    3  f70ac560     RU   0.0    0     0  [swapper]
    1     0    1  f705ba90     IN   0.0  2828  1424  init
... several lines omitted ...
 5566     1    1  f2592560     IN   0.0  12876   784  auditd
 5567     1    2  ef427560     IN   0.0  12876   784  auditd
 5587   5132    0  f196d030     IN   0.0  11064  3184  sshd
>  5591   5587    2  f196d560     RU   0.0   5084  1648  bash

```

Type **help ps** for more information on the command usage.

3.6. Displaying Virtual Memory Information

To display basic virtual memory information, type the **vm** command at the interactive prompt. You can use **vm <pid>** to display information on a single process.

Example 3.5. Displaying virtual memory information of the current context

```

crash> vm
PID: 5591    TASK: f196d560  CPU: 2    COMMAND: "bash"
  MM      PGD      RSS      TOTAL_VM
f19b5900  ef9c6000  1648k    5084k
  VMA      START      END      FLAGS    FILE
f1bb0310  242000    260000  8000875  /lib/ld-2.12.so
f26af0b8  260000    261000  8100871  /lib/ld-2.12.so
efbc275c  261000    262000  8100873  /lib/ld-2.12.so
efbc2a18  268000    3ed000  8000075  /lib/libc-2.12.so
efbc23d8  3ed000    3ee000  8000070  /lib/libc-2.12.so
efbc2888  3ee000    3f0000  8100071  /lib/libc-2.12.so
efbc2cd4  3f0000    3f1000  8100073  /lib/libc-2.12.so
efbc243c  3f1000    3f4000  100073   /lib/libc-2.12.so
efbc28ec  3f6000    3f9000  8000075  /lib/libdl-2.12.so
efbc2568  3f9000    3fa000  8100071  /lib/libdl-2.12.so
efbc2f2c  3fa000    3fb000  8100073  /lib/libdl-2.12.so
f26af888  7e6000    7fc000  8000075  /lib/libtinfo.so.5.7
f26aff2c  7fc000    7ff000  8100073  /lib/libtinfo.so.5.7
efbc211c  d83000    d8f000  8000075  /lib/libnss_files-2.12.so
efbc2504  d8f000    d90000  8100071  /lib/libnss_files-2.12.so
efbc2950  d90000    d91000  8100073  /lib/libnss_files-2.12.so
f26afe00  edc000    edd000  4040075  /lib/libnss_files-2.12.so
f1bb0a18  8047000  8118000  8001875  /bin/bash
f1bb01e4  8118000  811d000  8101873  /bin/bash
f1bb0c70  811d000  8122000  100073   /bin/bash
f26afae0  9fd9000  9ffa000  100073   /bin/bash
... several lines omitted ...

```

Type **help vm** for more information on the command usage.

3.7. Displaying Open Files

To display information about open files, type the **files** command at the interactive prompt. You can use **files <pid>** to display files opened by only one selected process.

Example 3.6. Displaying information about open files of the current context

```

crash> files
PID: 5591    TASK: f196d560  CPU: 2    COMMAND: "bash"
ROOT: /      CWD: /root
  FD      FILE      DENTRY      INODE      TYPE      PATH
  0      f734f640  eedc2c6c    eecd6048   CHR       /pts/0
  1      efade5c0  eee14090    f00431d4   REG       /proc/sysrq-trigger
  2      f734f640  eedc2c6c    eecd6048   CHR       /pts/0
  10     f734f640  eedc2c6c    eecd6048   CHR       /pts/0
  255    f734f640  eedc2c6c    eecd6048   CHR       /pts/0

```

Type **help files** for more information on the command usage.

3.8. Exiting the Utility

To exit the interactive prompt and terminate **crash**, type **exit** or **q**.

Example 3.7. Exiting the crash utility

```
crash> exit  
~]#
```

Frequently Asked Questions

Q:

How do I upload a large dump file to Red Hat Support Services?

A: In some cases, it might be necessary to send a kernel crash dump file to Red Hat Global Support Services for analysis. However, the dump file can be very large, even after being filtered. Since files larger than 250 MB cannot be uploaded directly through the Red Hat Customer Portal when opening a new support case, an FTP server is provided by Red Hat for uploading large files.

The FTP server's address is **dropbox.redhat.com** and the files are to be uploaded in the **/incoming/** directory. Your FTP client needs to be set into passive mode; if your firewall does not allow this mode, you may use the **origin-dropbox.redhat.com** server using active mode.

Make sure that the uploaded files are compressed using a program such as **gzip** and properly and descriptively named. Using your support case number in the file name is recommended. After successfully uploading all necessary files, provide the engineer in charge of your support case with the exact file name and its SHA1 or MD5 checksum.

For more specific instructions and additional information, see <https://access.redhat.com/site/solutions/2112>.

Supported kdump Configurations and Targets

B.1. Memory Requirements for kdump

In order for kdump to be able to capture a kernel crash dump and save it for further analysis, a part of the system memory has to be permanently reserved for the capture kernel. The table below contains a list of minimum memory requirements for kdump based on the system's architecture and total available physical memory.

For information on how to change memory settings on the command line, see [Section 2.3.1, “Configuring the Memory Usage”](#). For instructions on how to set up the amount of reserved memory in the graphical user interface, see [Section 2.4.1, “Configuring the Memory Usage”](#).

Table B.1. Minimum Amount of Reserved Memory Required for kdump

Architecture	Available Memory	Minimum Reserved Memory
AMD64 and Intel 64 (x86_64)	2 GB and more	160 MB + 2 bits for every 4 KB of RAM. For a system with 1 TB of memory, 224 MB is the minimum (160 + 64 MB).
IBM POWER (ppc64)	2 GB to 4 GB	256 MB of RAM.
	4 GB to 32 GB	512 MB of RAM.
	32 GB to 64 GB	1 GB of RAM.
	64 GB to 128 GB	2 GB of RAM.
	128 GB and more	4 GB of RAM.
IBM System z (s390x)	2 GB and more	160 MB + 2 bits for every 4 KB of RAM. For a system with 1 TB of memory, 224 MB is the minimum (160 + 64 MB).

B.2. Minimum Threshold for Automatic Memory Reservation

On some systems, it is possible to allocate memory for kdump automatically, either by using the **crashkernel=auto** parameter in the bootloader's configuration file, or by enabling this option in the graphical configuration utility. For this automatic reservation to work, however, a certain amount of total memory needs to be available in the system. This amount differs based on the system's architecture.

The table below lists the thresholds for automatic memory allocation. If the system has less memory than specified in the table, memory will have to be reserved manually.

For information on how to change these settings on the command line, see [Section 2.3.1, “Configuring the Memory Usage”](#). For instructions on how to change the amount of reserved memory in the graphical user interface, see [Section 2.4.1, “Configuring the Memory Usage”](#).

Table B.2. Minimum Amount of Memory Required for Automatic Memory Reservation

Architecture	Required Memory
AMD64 and Intel 64 (x86_64)	2 GB
IBM POWER (ppc64)	2 GB
IBM System z (s390x)	4 GB

B.3. Supported kdump Targets

When a kernel crash is captured, the core dump can be either written directly to a device, stored as a file on a local file system, or sent over a network. The table below contains a complete list of dump targets that are currently supported or explicitly unsupported by kdump.

For information on how to configure the target type on the command line, see [Section 2.3.2, “Configuring the kdump Type”](#). For information on how to do so in the graphical user interface, see [Section 2.4.2, “Configuring the kdump Type”](#).

Table B.3. Supported kdump Targets

Type	Supported Targets	Unsupported Targets
Raw device	All locally attached raw disks and partitions.	—
Local file system	ext2 , ext3 , ext4 , minix , btrfs and xfs file systems on directly attached disk drives, hardware RAID logical drives, LVM devices, and mdraid arrays.	Any local file system not explicitly listed as supported in this table, including the auto type (automatic file system detection).
Remote directory	Remote directories accessed using the NFS or SSH protocol over IPv4 .	Remote directories on the rootfs file system accessed using the NFS protocol.
	Remote directories accessed using the iSCSI protocol over software initiators, unless iBFT (<i>iSCSI Boot Firmware Table</i>) is utilized.	Remote directories accessed using the iSCSI protocol using iBFT .
	Multipath-based storages.	Remote directories accessed using the iSCSI protocol over hardware initiators.
	—	Remote directories accessed over IPv6 .
	—	Remote directories accessed using the SMB/CIFS protocol.
—	Remote directories accessed using the FCoE (<i>Fibre Channel over Ethernet</i>) protocol.	
—	Remote directories accessed using wireless network interfaces.	

B.4. Supported kdump Filtering Levels

To reduce the size of the dump file, kdump uses the **makedumpfile** core collector to compress the data and optionally leave out irrelevant information. The table below contains a complete list of filtering levels that are currently supported by the **makedumpfile** utility.

For instructions on how to configure the core collector on the command line, see [Section 2.3.3, “Configuring the Core Collector”](#). For information on how to do so in the graphical user interface, see [Section 2.4.3, “Configuring the Core Collector”](#).

Table B.4. Supported Filtering Levels

Option	Description
1	Zero pages
2	Cache pages
4	Cache private
8	User pages
16	Free pages

B.5. Supported Default Actions

By default, when `kdump` fails to create a core dump, it mounts the root file system and attempts to save the core locally. You can, however, configure `kdump` to perform a different operation in case it fails to save the core dump to the primary target. The table below lists all default actions that are currently supported by `kdump`.

For detailed information on how to set up the default action on the command line, see [Section 2.3.4, “Configuring the Default Action”](#). For information on how to do so in the graphical user interface, see [Section 2.4.4, “Configuring the Default Action”](#).

Table B.5. Supported Default Actions

Option	Description
dump_to_rootfs	Attempt to save the core dump to the root file system. This option is especially useful in combination with a network target: if the network target is unreachable, this option configures <code>kdump</code> to save the core dump locally. The system is rebooted afterwards.
reboot	Reboot the system, losing the core dump in the process.
halt	Halt the system, losing the core dump in the process.
poweroff	Power off the system, losing the core dump in the process.
shell	Run a shell session from within the <code>initramfs</code> , allowing the user to record the core dump manually.

Revision History

Revision 1.0-1	Thu 05 Jun 2014	Jaromír Hradílek
Red Hat Enterprise Linux 7.0 GA release of the Kernel Crash Dump Guide.		
Revision 0.0-8	Thu Jan 17 2013	Jaromír Hradílek
Initial creation of the book.		