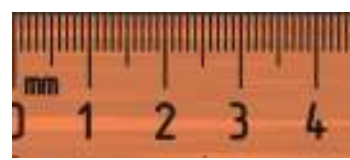


# DUNG BEETLE IDENTIFICATION CHART



## WHAT COLOUR IS YOUR BEETLE?



Black (Section A)



Brown (Section B)



Two-toned (Section C)

## WHAT IS THE LENGTH OF YOUR BEETLE?

Measure from tip of the head to the end of abdomen (in mm)

## SECTION A. BLACK BEETLES

**LENGTH:** 20 – 25mm

**FEATURE:** Blue/purple sheen on the underside

= *Geotrupes spiniger* (Blue dung beetle)



Bluish sheen on the underside



protruding shoulder horn

**LENGTH:** 13 - 20mm

**FEATURE:** Shiny black. Protruding shoulder horn and 2 horns on head

= *Bubas bison* (male)

**FEATURE:** Two parallel ridges on head instead of horns. Protruding shoulder horn not present

= *Bubas bison* (female)



2 horns on head



Male  
Side view

Female  
2 ridges on head

**LENGTH:** 10 – 13mm

**FEATURE:** Matt black, when viewed from the side there is a distinct shoulder ridge – horns are not present

= *Onthophagus binodis* (Humpbacked dung beetle)



Male



Female

**LENGTH:** 7 - 12mm

**FEATURE:** Shiny black with coppery green sheen. A slight groove runs down the middle of the midsection. Males have upright horns

= *Onthophagus australis* (native species)



Groove on midsection



Male has upright horns

**LENGTH:** 8 – 10mm

**FEATURE:** Shiny black. Major males have long curved horns that sweep back over the thorax. Minor males have shorter horns and females have no horns but have a similar body shape

= *Onthophagus taurus* (Bullhorned dung beetle)



long curved horns

Major male

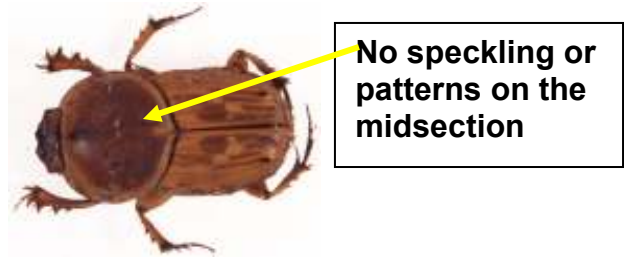


Female

## SECTION B. BROWN BEETLES

**LENGTH:** 8 - 12mm

**FEATURE:** No speckling on the midsection  
= *Euoniticellus fulvus*



**LENGTH:** 8 - 12mm

**FEATURE:** Dark speckling on the midsection and wing covers  
= *Euoniticellus pallipes*



**LENGTH:** 7 - 9mm

**FEATURE:** Diamond pattern on the midsection. The male has a curved blunt horn on the head  
= *Euoniticellus intermedius*

horn



## SECTION C. TWO-TONED (view in bright light)

**LENGTH:** 20 - 25mm

**FEATURE:** Male has a double spur on back legs  
= *Onitis aygulus*



Double spur on back leg

**LENGTH:** 13 - 20mm

**FEATURE:** Male has a single spur on back legs  
= *Onitis alexis* (Bronze dung beetle)



Single spur on back leg

## OTHER BEETLES COMMONLY FOUND IN DUNG



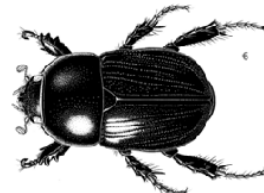
7-9mm

*Aphodius*  
*fimetarius*



4-6mm

*Aphodius*  
*lividus*



11-14mm

*Heteronychus arator*  
African Black Beetle (pest)

References & Images:

Doube, B., Dalton G., 2003, *Identifying dung beetles on the Fleurieu Peninsula*, Fleurieu Beef Group  
Dung Beetles for Landcare Farming, 2008, *Dung Beetle Dictionary*, Landcare Australia  
Tyndale-Biscoe, 1990, *Common dung beetles in pastures of south-eastern Australia*, CSIRO Australia