



# Improving livelihoods through mangrove ecosystem restoration in the Sine-Saloum Delta, Senegal.

Tasila Banda, PhD.  
@ Wetlands International, Ede.  
March 9<sup>th</sup> 2012.

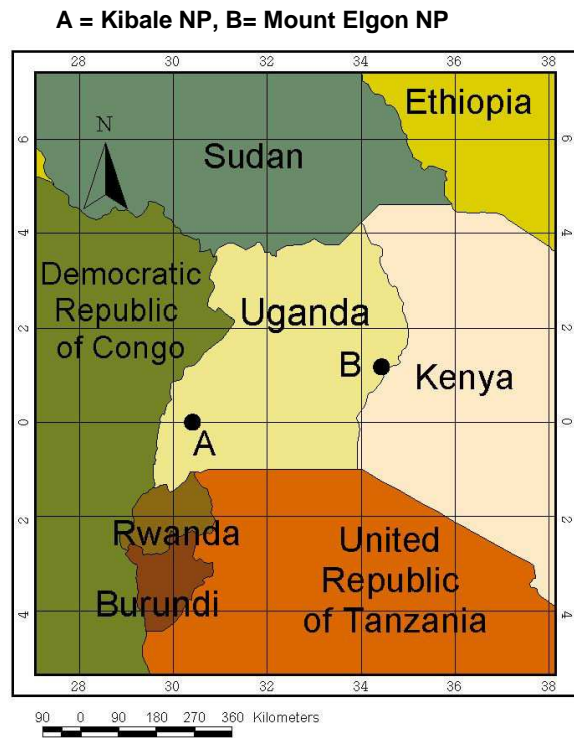


# About Face

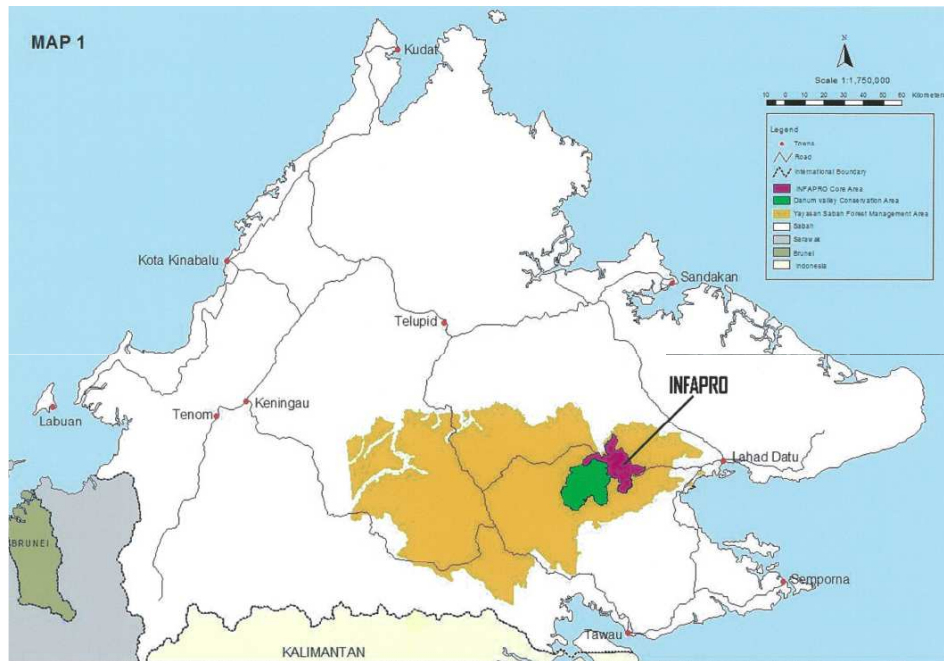
- Established in 1990 as Face Foundation.
- Transformed to Face the Future in 2009.
- ARR (Uganda, Ecuador), REDD (Ecuador) and IFM (Malaysia) projects.
- Carbon- and forest certification.
- Transacted over 2 million carbon credits.



# Kibale Natural High Forest Rehabilitation Project, in Uganda.



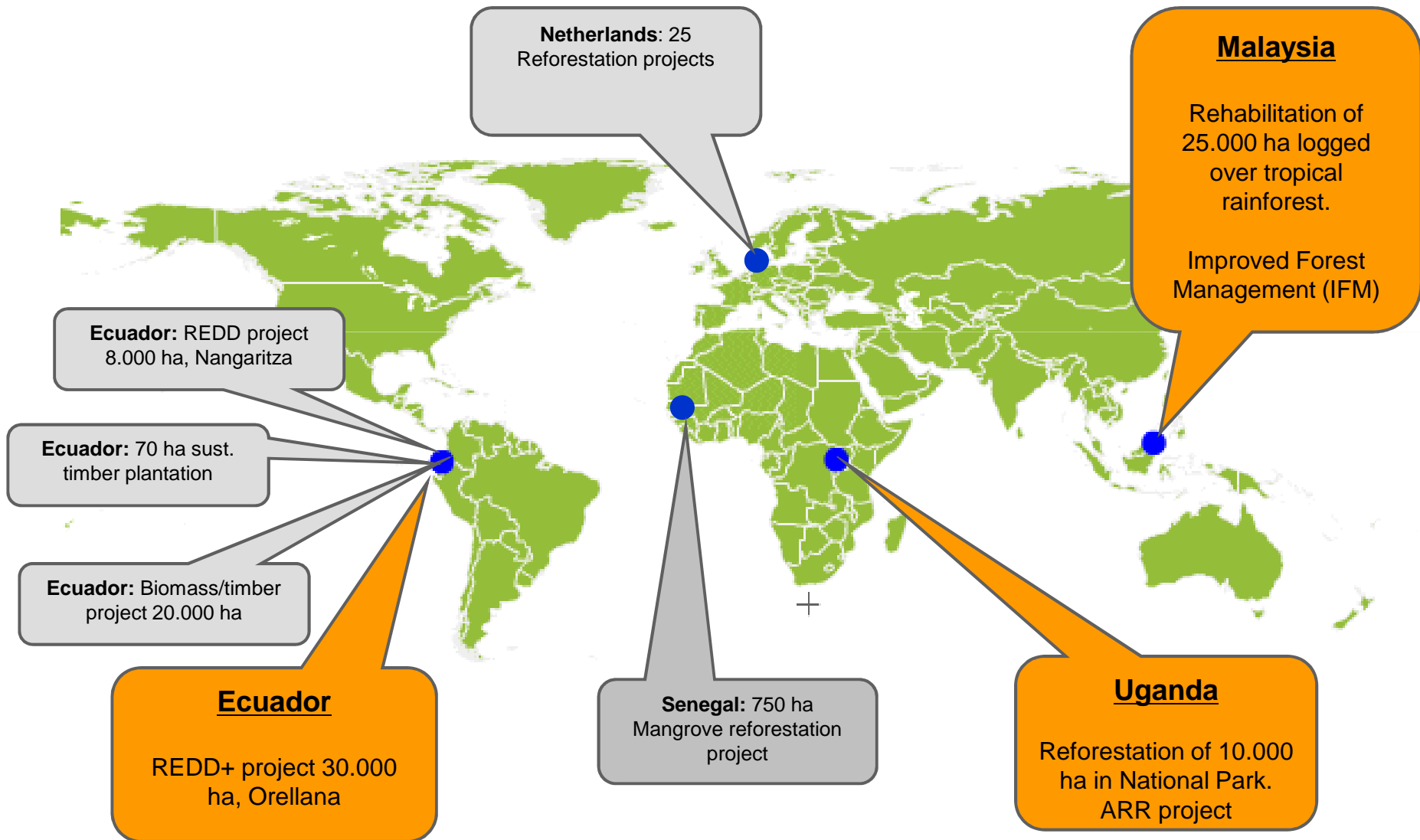
# INFAPRO Improved Forest Management Project in Sabah, Malaysia.





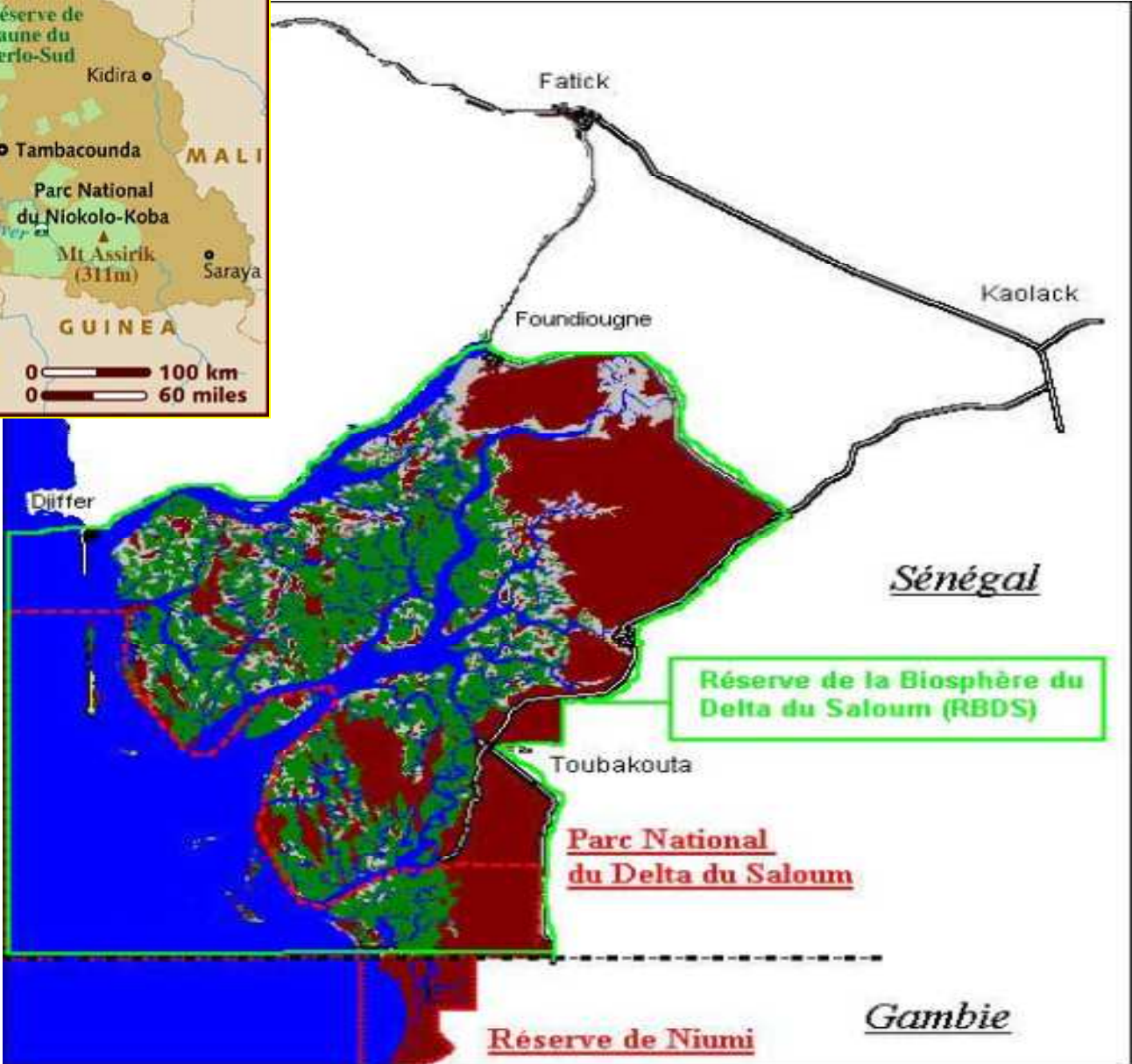
**Ecuador**

# Our projects



# IUCN training







# Importance of mangrove ecosystems



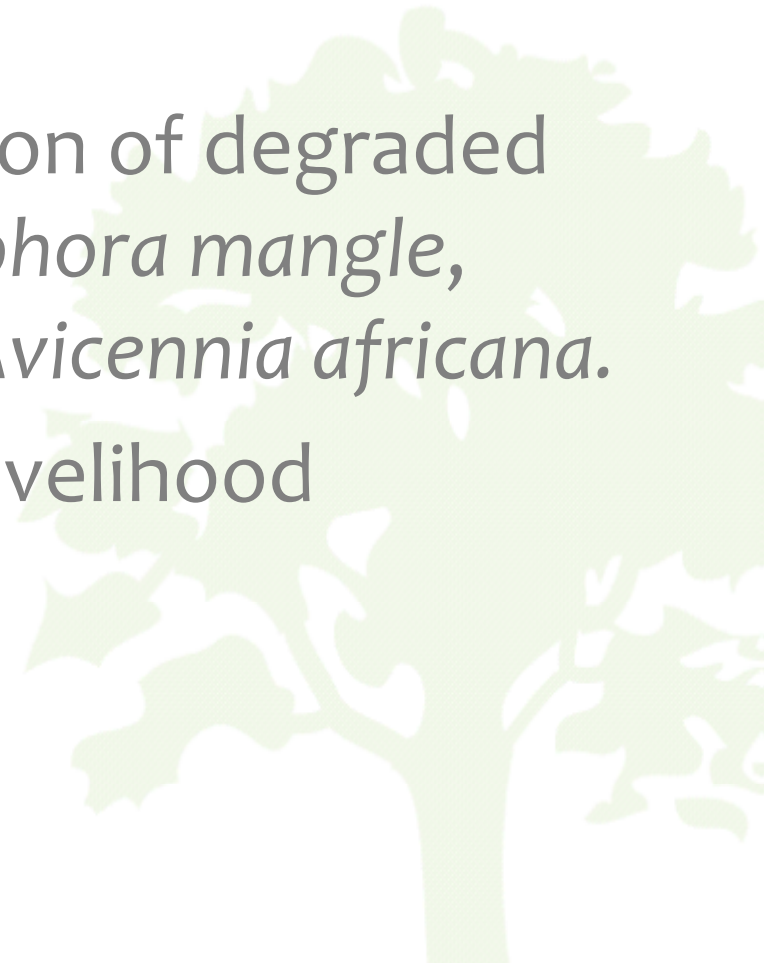
# Project objectives

- Climate mitigation through CO<sub>2</sub> sequestration.
- Mangrove ecosystem restoration.
- Income generation and livelihood improvement for local communities.



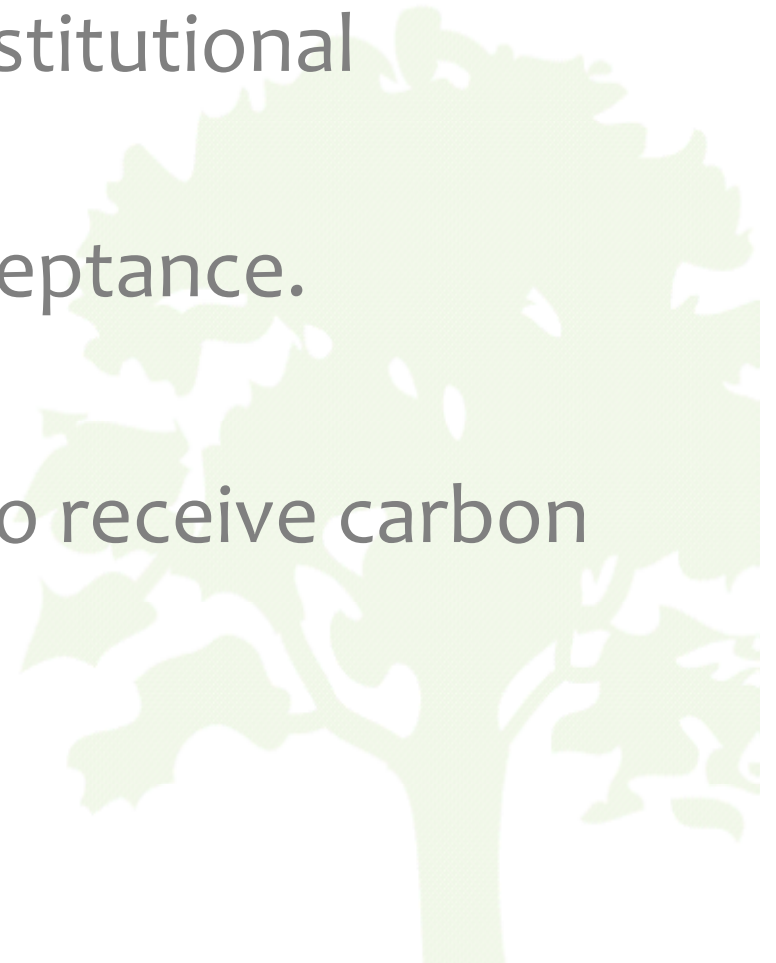
# Project Activities

- Sensitization and capacity building of local communities.
- Identification and restoration of degraded sites with species of *Rhizophora mangle*, *Rhizophora racemosa* and *Avicennia africana*.
- Stimulation of alternative livelihood activities.



# Feasibility study

- Methodological (validation and verification).
- Local organizational and institutional capacity.
- Local commitment and acceptance.
- Co-benefits.
- Feasibility for the project to receive carbon funding.



# Assessment of land eligibility



# Baseline definition



# Project Additionality (and Co-benefits)

Women's groups and their efforts to restore mangroves:



## Eligibility under AR-AM0003 methodology





# Greenhouse gas reduction potential

year	DBH	AGB (kg d.m.)	Density	Mortality (%)	CO2 (t/ha)	total seq 750 ha	ER per year
1	0	0	10000	30%	0,0	0,0	0
2	0	0	7000	20%	0,0	0,0	0,0
3	0	0	5600	15%	0,0	0,0	0,0
4	0,1	0,02	4760	10%	0,3	48,0	48,0
5	0,2	0,06	4284	5%	0,9	177,4	129,5
6	0,4	0,17	4070	5%	2,3	525,9	348,5
7	0,7	0,37	3866	0%	4,8	1246,5	720,6
8	0,9	0,7	3866	0%	9,1	2609,7	1363,2
9	1,3	1,19	3866	0%	15,5	4879,3	2269,6
10	1,7	1,85	3866	0%	24,0	8352,7	3473,4
11	2	2,68	3866	0%	34,8	13223,5	4870,8
12	2,5	3,67	3866	0%	47,6	19650,2	6426,7
13	2,9	4,8	3866	0%	62,3	27634,9	7984,7
14	3,3	6,04	3866	0%	78,4	37080,2	9445,3
15	3,7	7,37	3866	0%	95,7	47830,3	10750,1
16	4,1	8,76	3866	0%	113,7	59671,1	11840,7
17	4,4	10,18	3866	0%	132,2	72349,2	12678,2
18	4,8	11,6	3866	0%	150,6	85592,2	13242,9
19	5,1	13	3866	0%	168,8	99146,7	13554,5
20	5,4	14,36	3866	0%	186,4	112759,6	13613,0
21	5,7	15,67	3866	0%	203,4	126216,8	13457,2
22	5,9	16,92	3866	0%	219,7	139342,9	13126,1
23	6,2	18,1	3866	0%	235,0	152001,5	12658,7
24	6,4	19,21	3866	0%	249,4	164095,5	12093,9
25	6,6	20,24	3866	0%	262,8	175546,7	11451,2
26	6,8	21,19	3866	0%	275,1	186296,8	10750,1
27	6,9	22,07	3866	0%	286,5	196326,4	10029,6
28	7,1	22,87	3866	0%	296,9	205615,9	9289,5
29	7,2	23,61	3866	0%	306,5	214184,9	8569,0
30	7,3	24,28	3866	0%	315,2	222052,7	7867,9

avg/year 7401,76  
total 222052,7



# Social and environmental feasibility considerations

- **Social:**

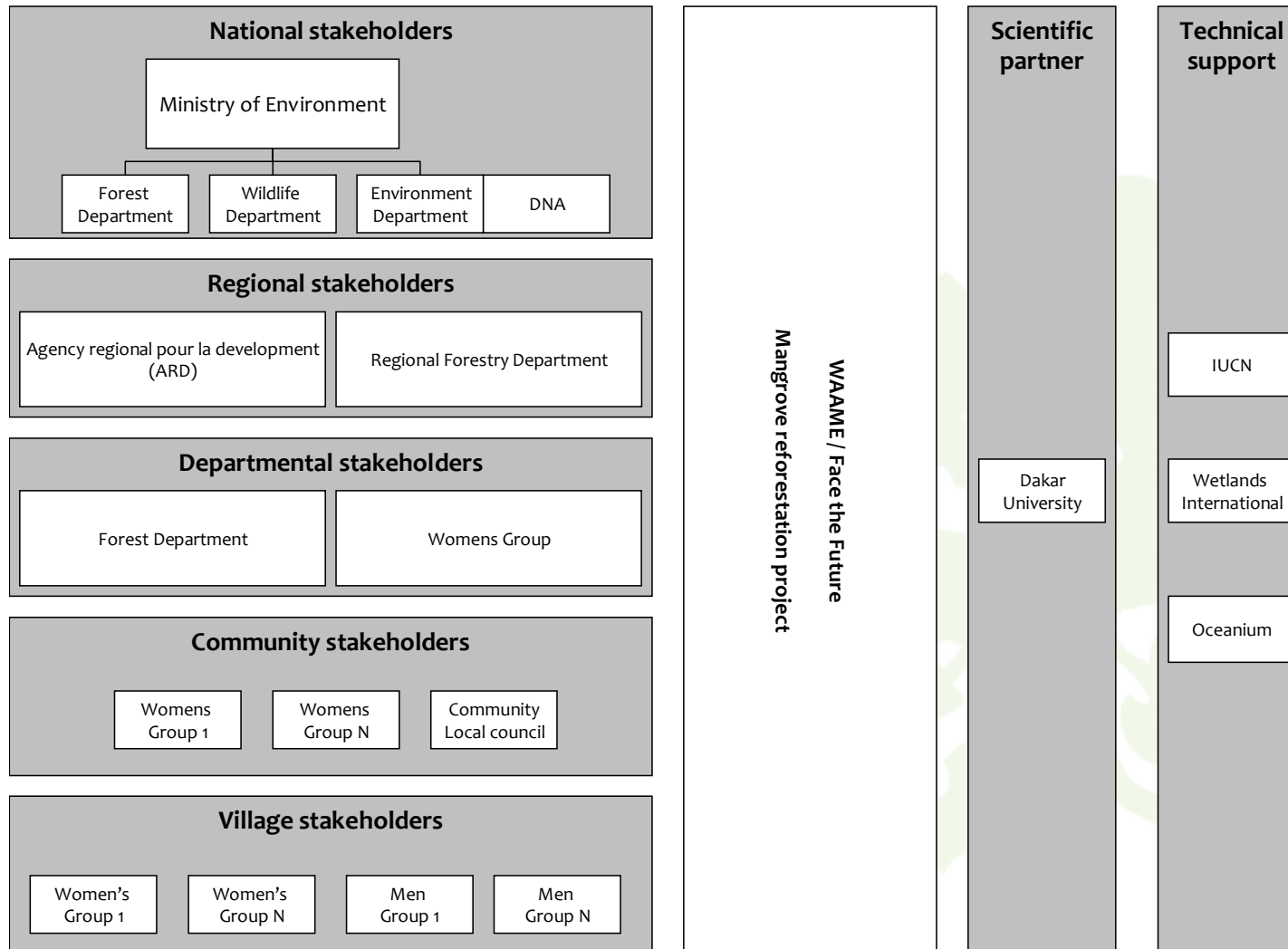
- Employment opportunities.
- Socio-cultural benefits.
- Sensitisation and capacity building.
- Strengthening of collaborations among various Women's groups.
- Involvement of Men and Youth groups.

- **Environmental:**

- Flora and fauna rich ecosystems.
- Soil rehabilitation benefits.
- Improved of hydrodynamics.



# Organisational considerations



# Challenges



High upfront costs

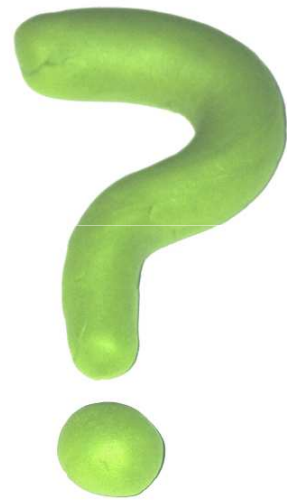


Slow carbon credit generation



Uncertainty in the VCM

# Collaboration opportunity with Wetlands International



Thank you....

